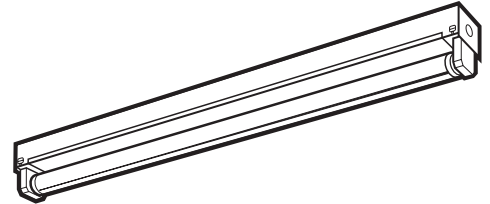


## CH Striplite



CATALOG NUMBER \_\_\_\_\_  
 TYPE \_\_\_\_\_  
 DATE \_\_\_\_\_  
 PREPARED BY \_\_\_\_\_  
 PROJECT \_\_\_\_\_

**HOUSING:** Die-formed heavy gauge steel with high-gloss, baked white enamel finish over rust inhibiting phosphate coat with removable wireway access panel. Ample knockouts provided on side, back and ends. Shipped fully wired and assembled, including socket saddle. Simply flip up socket bar and attach wireway cover with turn fastener provided. Machine installed shunts eliminate loose socket bar connections on electronic strips.

**OPTIONS:** Modular wiring, white or silver asymmetric or symmetric reflectors, and emergency lighting battery packs are available options.

**ELECTRICAL:** Fully wired for UNV 120-277V, 50-60Hz operation with thermally protected, automatic resetting Class P, sound rated A ballast as standard unless otherwise specified. UL listed damp location.

**MOUNTING:** Combination end plate/joiner connect units for continuous row or wire through, use CHJ. Optional plug-in wiring system available.

### CH Original Patented Striplite Ordering Information

Series	# Lamps	Lamps
CH	1	14 = 14W 15" T12    28 = 28W T5
	2	14 = 14W 24" T5    30 = 30W 36" T12
	4	15 = 15W 18" T8/T12    32 = 32W 48" T8
	21 = Tandem, two lamps	17 = 17W 24" T8    39 = 39W 36" T5HO
	22 = Tandem, four lamps	20 = 20W 24" T12    40 = 34/40W 48" T12
		21 = 21W 36" T5    40TT = 40W 22" TT
		24 = 24W 24" T5HO    54 = 54W T5HO
		25 = 25W 36" T8

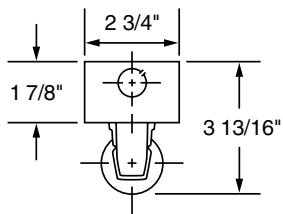
ELS Options	Ballast	Switching	Voltage
ELS1 = Emergency Lighting (low lumens)	B5 = Electronic T12	<b>For 4 lamp units</b>	UNV = 120-277V
ELS2 = Emergency Lighting (medium lumens)	B11 = Electronic T8	Blank = dual ballasts	120 = 120V
ELS3 = Emergency Lighting (high lumens)	B11HP(x) = HPT8*	4L = (1) 4-lamp ballast	277 = 277V
	B12 = Electronic T5	<b>For 2 lamp units</b>	
	B14 = Electronic TT	Blank = single ballast	
	B22 = LPF Electronic T8/T12	D = Dimming (specify ballast)	2/1L = (2) 1-lamp ballasts

\*CEE listed T8; specify (L)ow, (N)ormal, or (H)igh ballast factor. Contact factory for NEMA Premium.

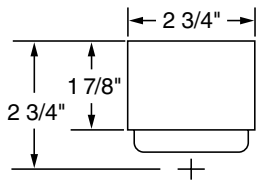
Options	Accessories
<b>Cord and Plug</b>	<b>Reflectors</b> (Not compatible with wire guards)
CPT(x) (Twist + Lock)	<i>Symmetric</i>
1 = 120V	SR(x)(y)20 = 24"
2 = 277V	SR(x)(y)30 = 36" (Order 2 for tandem 72" units)
CP3 = Cord & Plug - 120V Straight	SR(x)(y)40 = 48" (Order 2 for tandem 96" units)
Blade 5-15P	<i>Asymmetric</i>
<b>Plug-in Connectors</b>	AR(x)20 = 24"
<i>Ballast wired to Black:</i>	AR(x)30 = 36" (Order 2 for tandem 72" units)
PL1 - one circuit, two wires	AR(x)40 = 48" (Order 2 for tandem 96" units)
PL2 BK - two circuits, three wires	(x) Enter (W) for white or (S) for specular aluminum
<i>Ballast wired to Red:</i>	(y) Enter # lamps (1 or 2)
PL2 RD - two circuits, three wires	
FB = Fast blow fuse	AC = Alignment Clips
SB = Slow blow fuse	CA24 = Chain Hanger Assembly - (2) 18" chains, (2) "V" hooks, (2) "S" hooks for total drop 24"
BP = Bulk Pack	CS24 = "S" Hook (4) Chain Hanger Assembly (24" total drop)
	PM(x) = Pendant Mount, white stem - specify length in inches (24, 36, 48, 60, 72)
	C = Single white canopy (for use with pendant mount)
	CHJ = Housing Joiner
	SN = Snapper Brackets (2 lamp and 4 lamp tandem models only)
	WG(x)20 = 24" (Specify # Lamps) (1 or 2)
	WG(x)30 = 36" (Specify # Lamps) (1 or 2)
	WG(x)40 = 48" (Specify # Lamps) (1 or 2)

# CH Striplite

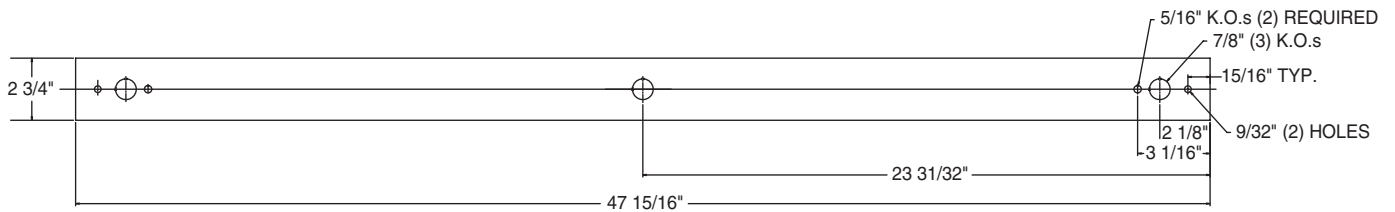
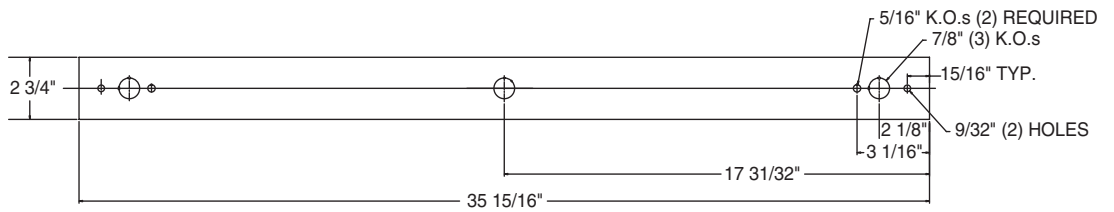
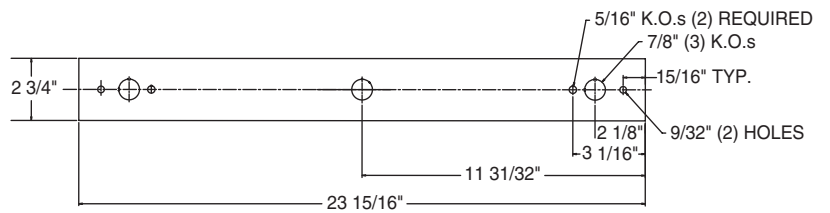
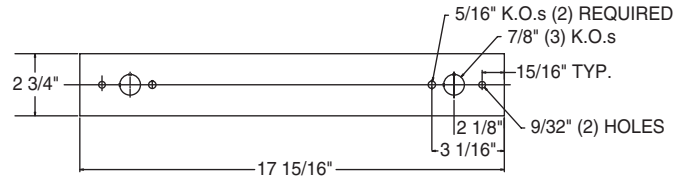
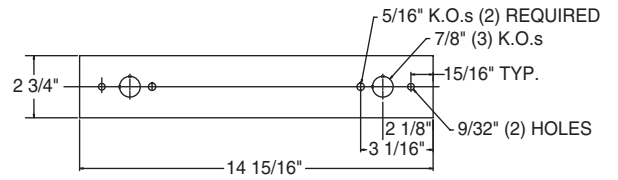
## Dimensions



**CH**

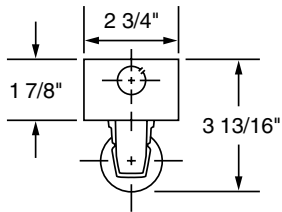
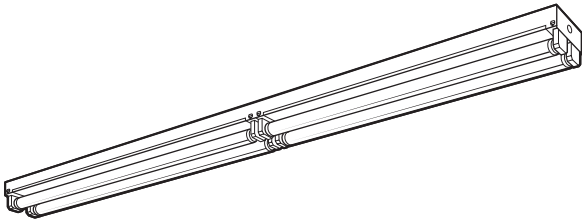
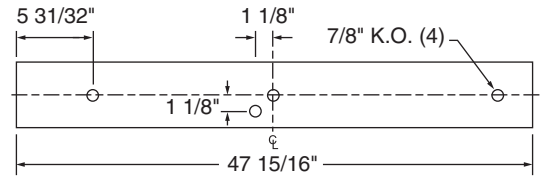
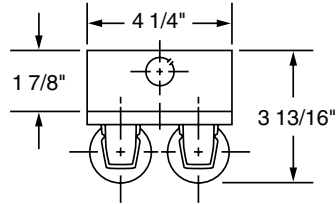
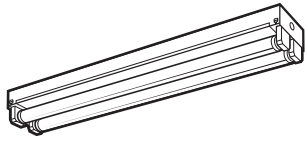


**CHTT**

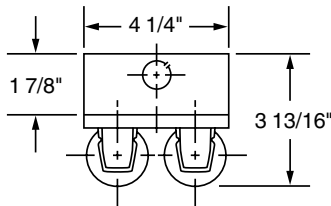


# CH Striplite

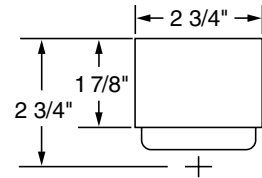
## Dimensions



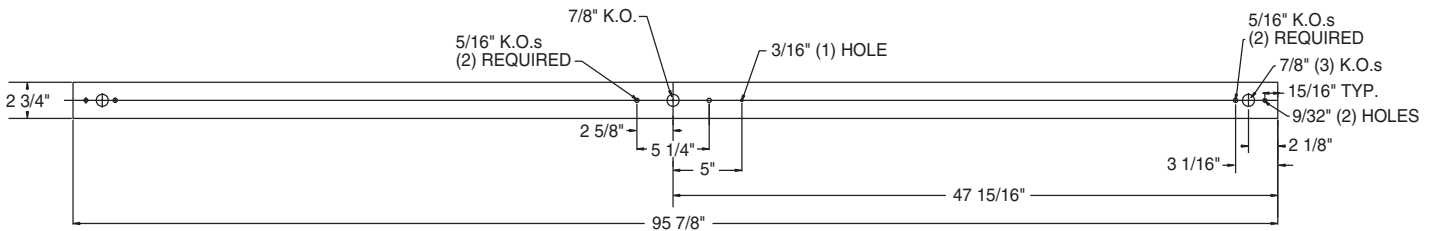
**CH  
1 Lamp**



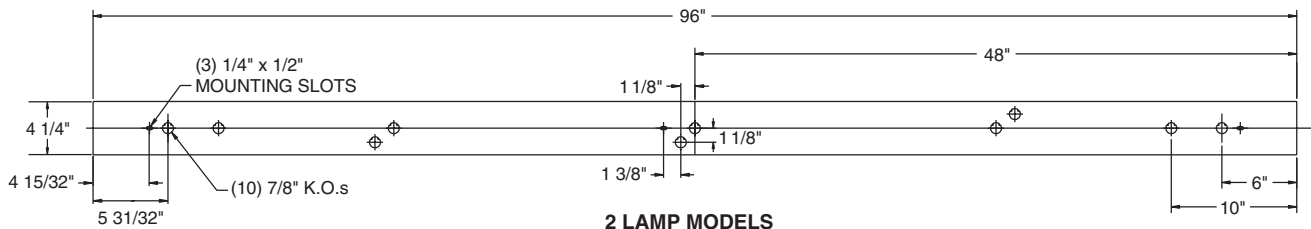
**CH  
2 Lamp**



**CHTT**



**1 LAMP MODELS**



**2 LAMP MODELS**