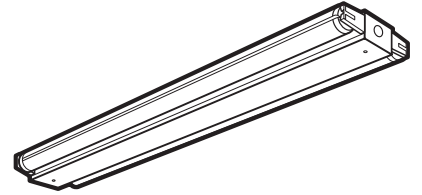


# TECHNICAL SPECIFICATIONS

## CHA and CHS Striplite



CATALOG NUMBER \_\_\_\_\_  
 TYPE \_\_\_\_\_  
 DATE \_\_\_\_\_  
 PREPARED BY \_\_\_\_\_  
 PROJECT \_\_\_\_\_

**HOUSING:** Die-formed heavy gauge steel with high-gloss, baked white enamel finish over rust inhibiting phosphate coat with removable wireway access panel. Fixture is shipped fully wired. Secure wireway cover with screw. Ample knockouts provided.

**OPTIONS:** Options include modular wiring and master unit ballast driving multiple fixtures, e.g., CHS232 B11 4L-M will drive the second fixture CHS232-S (less ballast). Optional plug-in wiring system available.

**ELECTRICAL:** Fully wired for UNV 120-277V, 50-60Hz operation with thermally protected, automatic resetting Class P, sound rated A ballast as standard unless otherwise specified. UL listed damp location.

**MOUNTING:** Individual or continuous row.

### CHA and CHS Striplites Ordering Information

Series	# Lamps	Lamps	ELS Options
CHA = Lamps mount at 90°	1 (CHS only)	17 = 17W 24" T8	ELS1 = Emergency Lighting (low lumens)
CHS = Side-mount lamp(s)	2	20 = 20W 24" T12	
	3 (CHA only)	25 = 25W 36" T8	ELS2 = Emergency Lighting (medium lumens)
	21 = Tandem, 2 lamps (CHS Only)	30 = 30W 36" T12	
		32 = 32W 48" T8	ELS3 = Emergency Lighting (high lumens)
		40 = 34 or 40W 48" T12	
		96 = 96" T8 Slimline (CHS 1-lamp only)*	

\*CHS196 is 4" wide x 3" deep

Ballast	Switching	Voltage
B5 = Electronic T12	<b>FOR 3 LAMP UNITS</b>	UNV = 120-277V
B11 = Electronic T8	Blank = dual ballasts	120 = 120V
B11HP(x) = HPTB**	3L = (1) 3-lamp ballast	277 = 277V
D = Dimming (specify ballast)		

\*\*CEE listed T8; specify (L)ow, (N)ormal, or (H)igh ballast factor. Contact factory for NEMA Premium.

#### Options

##### CORD AND PLUG

CPT(x)

1 = 120V

2 = 277V

CP3 = Cord & Plug - 120V Straight Blade 5-15P

##### PLUG-IN CONNECTORS

Ballast wired to Black:

PL1 - one circuit, two wires

PL2 BK - two circuits, three wires

Ballast wired to Red:

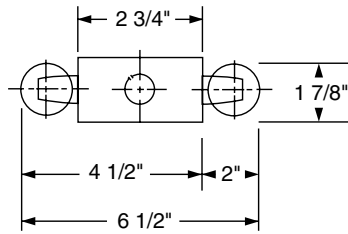
PL2 RD - two circuits, three wires

FB = Fast blow fuse

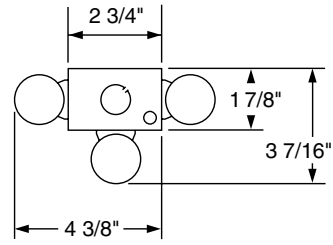
SB = Slow blow fuse

# CHA/CHS Striplites

## Dimensions



**CHS 1 or 2 Lamp**



**CHA 2 or 3 Lamp**

