

CHS One Lamp
24" to 96"



CHS Two Lamp
24" to 48"



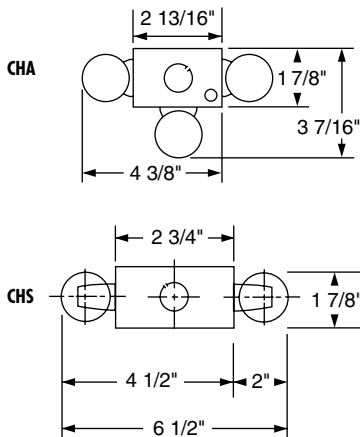
CHA - Two or three lamps
mounted at 90°
24", 36", 48"



CHA and CHS Striplites are ideal for custom lighting in retail stores and commercial environments.



Dimensions



Housing

Die-formed heavy gauge steel with high-gloss, baked white enamel finish over rust inhibiting phosphate coat with removable wireway access panel. Fixture is shipped fully wired. Secure wireway cover with screw. Ample knockouts provided.

Options

Options include modular wiring and master unit ballast driving multiple fixtures, e.g., CHS232 B11 4L-M will drive the second fixture CHS232-S (less ballast). Optional plug-in wiring system described in detail on page 92.

Electrical

Fully wired for UNV 120-277V, 50-60Hz operation with thermally protected, automatic resetting Class P, sound rated A ballast as standard unless otherwise specified. UL listed damp location.

Mounting

Individual or continuous row.

CHA and CHS Striplites Ordering Information

Series	# Lamps	Lamps	ELS Options
CHA = Lamps mount at 90°	1 (CHS only)	17 = 17W 24" T8	ELS1 = Emergency Lighting (low lumens)
CHS = Side-mount lamp(s)	2	20 = 20W 24" T12	
	3 (CHA only)	25 = 25W 36" T8	ELS2 = Emergency Lighting (medium lumens)
	21 = Tandem, 2 lamps (CHS Only)	30 = 30W 36" T12	
		32 = 32W 48" T8	ELS3 = Emergency Lighting (high lumens)
		40 = 34 or 40W 48" T12	
		96 = 96" T8 Slimline (CHS 1-lamp only)*	

*CHS196 is 4" wide x 3" deep

Ballast	Switching	Voltage
B5 = Electronic T12	FOR 3 LAMP UNITS	UNV = 120-277V
B11 = Electronic T8	Blank = dual ballasts	120 = 120V
B11HP(x) = HPT8**	3L = (1) 3-lamp ballast	277 = 277V
D = Dimming (specify ballast)		

**CEE listed T8; specify (L)ow, (N)ormal, or (H)igh ballast factor. Contact factory for NEMA Premium.

Options

CORD AND PLUG

- CPT(x)
 - 1 = 120V
 - 2 = 277V
- CP3 = Cord & Plug - 120V Straight Blade 5-15P

PLUG-IN CONNECTORS

- Ballast wired to Black:
 - PL1 - one circuit, two wires
 - PL2 BK - two circuits, three wires
- Ballast wired to Red:
 - PL2 RD - two circuits, three wires

- FB = Fast blow fuse
- SB = Slow blow fuse