

1. Values are fastest-mile speeds at 33 ft. (10m) above ground.
2. Linear interpolation between wind speed contours is acceptable.
3. Alaska and/or special wind regions require caution in application of wind speed information.

HID Lighting Poles

No matter the application, Simkar provides an assortment of round and square steel poles, tenons and mounting accessories. Simkar’s poles feature materials and finishes resistant to chemicals, corrosion and abrasion which will enhance the pole’s aesthetic appeal and service life.

It is important to select pole(s) according to the structural requirement and to suit the specific application. Effective Projected Area (EPA) ratings on page 252 are listed for each pole and cover the full range of available fixtures with various mounting options. EPA ratings take into account a gust factor of 1.3 to ensure adequate wind loading under extreme conditions.

EPA is the exposed surface area of both the fixture and the bracket with some variation depending on the shape of the surface. Pole selection should also take into account the wind regions shown on the wind map. Base the EPA rating of the pole on the wind speed of each specific area.

When placing your order, it is also important to consider the total weight of the fixture(s) to be mounted on each pole. Simply add the total weight of all the fixtures and reference the **maximum fixture weight** listed on the pole ordering information table for each model as shown below.

Example:
Round Tapered Steel Pole Ordering Information

Pole Height	Catalog Number	Base Outer Diameter	Pole EPA Ratings Base Wind Velocity (MPH) With 1.3 Wind Gust Factor			Maximum Fixture Weight (lbs) @ 80MPH	Weight (lbs)
			80	90	100		
11 Gauge							
20'	RTSP-590A200P2-(a)(b)	5.9	19.3	15.1	12.2	482	140
	RTSP-650A200P2-(a)(b)	6.5	24.2	19.3	15.6	605	160
25'	RTSP-590A250PL-(a)(b)	5.9	12.5	9.9	8	312	155
	RTSP-700A250P2-(a)(b)	7	20.3	16.2	13.1	507	200
30'	RTSP-660A300PL-(a)(b)	6.6	11.7	9.3	7.5	292	200
	RTSP-800A300P2-(a)(b)	8	18.9	14.9	12	473	265
35'	RTSP-730A350PL-(a)(b)	7.3	11.2	8.9	7.1	280	250
	RTSP-850A350P2-(a)(b)	8.5	18.9	15.1	12.2	472	315
	RTSP-950A350P2-(a)(b)	9.5	23.2	18.2	14.5	580	370

Use these charts to calculate the correct type of pole to be used with fixtures and mounting arms selected.

- Select the chart applicable to the fixture
- Select the chart applicable to the mounting arm to be used and the angle of the fixture
- Check the wind speed in the area of the country the fixtures will be used.

- Calculate the total weight of the fixtures and mounting arms on each pole.
- Select the pole from the pole chart based on the total EPA and total weight, using the wind speed column. Allow a minimum of a 10% safety factor.
- **Please Note:** These are guidelines only — consult the factory if you are unsure.



12" Square Housings With Adjustable Fitters (MA3)

Catalog #	# Fixtures	0°	20°	30°	45°	60°	70°	90°
SPB14	1	0.66	0.91	1.03	1.21	1.26	1.31	1.32
SPB24	2 in-line	2.93	3.42	3.52	3.64	4.05	4.31	4.35
SPB34	3 in-line	4.84	5.54	5.70	6.02	6.54	6.80	6.85
SPB44180	4 in-line	6.74	7.65	7.79	8.40	8.71	9.32	9.38
SPB15	1	0.66	0.91	1.03	1.21	1.26	1.31	1.32

Catalog #	# Fixtures	0°	20°	30°	45°	60°	70°	90°
RT1	1	1.00	1.21	1.27	1.33	1.57	1.62	1.67
MP1T*	1	1.10	1.25	1.30	1.40	1.60	1.65	1.70
MP2T*	2	2.20	2.50	2.60	2.80	3.20	3.30	3.40

Catalog #	# Fixtures	0°	20°	30°	45°	60°	70°	90°
BH2	2 in-line	2.93	3.42	3.52	3.64	4.05	4.31	4.35
BH3	3 in-line	4.84	5.54	5.70	6.02	6.54	6.80	6.85
BH3T	3 @ 120	4.55	5.21	5.36	5.66	6.15	6.39	6.44
BH4	4 in-line	6.74	7.65	7.79	8.40	8.71	9.32	9.38
BH490	4 @ 90	4.02	4.40	4.45	4.59	4.68	4.79	4.83

16" Square Housings With Adjustable Fitters (MA3)

Catalog #	# Fixtures	0°	20°	30°	45°	60°	70°	90°
SPB14	1	1.00	1.50	1.70	2.00	2.10	2.20	2.30
SPB24	2 in-line	3.60	4.50	4.70	4.90	5.60	5.80	6.00
SPB34	3 in-line	5.80	7.10	7.40	7.90	8.80	9.30	9.50
SPB4490	4 @ 90°	5.00	5.60	5.70	5.90	6.10	6.30	6.50
SPB44180	4 in-line	8.00	9.70	10.00	10.90	11.60	12.60	12.90
SPB15	1	1.00	1.50	1.70	2.00	2.10	2.20	2.30

Catalog #	# Fixtures	0°	20°	30°	45°	60°	70°	90°
RT1	1	1.30	1.70	1.80	1.90	2.30	2.40	2.50
MP1T*	1	1.40	1.75	1.90	2.00	2.25	2.50	2.60
MP2T*	2	2.80	3.50	3.80	4.00	4.50	5.00	5.20

Catalog #	# Fixtures	0°	20°	30°	45°	60°	70°	90°
BH2	2 in-line	3.60	4.50	4.70	4.90	5.60	5.80	6.00
BH3	3 in-line	5.80	7.10	7.40	7.90	8.80	9.30	9.50
BH3T	3 @ 120	5.40	6.40	6.60	6.90	7.50	7.80	8.00
BH4	4 in-line	8.00	9.70	10.00	10.90	11.60	12.60	12.90
BH490	4 @ 90	5.00	5.60	5.70	5.90	6.10	6.30	6.50

23" Square Housings With Adjustable Fitters (MA3)

Catalog #	# Fixtures	0°	20°	30°	45°	60°	70°	90°
SPB14	1	2.00	2.70	2.90	3.70	3.80	4.00	4.20
SPB24	2 in-line	6.00	7.70	7.90	8.40	9.70	10.00	10.40
SPB34	3 in-line	9.70	12.00	12.50	13.50	15.40	15.80	16.20
SPB4490	4 @ 90°	8.50	9.10	9.30	9.90	10.50	10.70	10.90
SPB44180	4 in-line	13.10	15.60	16.00	18.40	19.90	21.60	22.00
SPB15	1	2.00	2.70	2.90	3.70	3.80	4.00	4.20

Catalog #	# Fixtures	0°	20°	30°	45°	60°	70°	90°
RT1	1	2.10	2.80	3.00	3.30	3.90	4.10	4.20
MP1T*	1	2.20	3.00	3.25	3.50	4.00	4.25	4.50
MP2T*	2	4.40	6.00	6.50	7.00	8.00	8.50	9.00

Catalog #	# Fixtures	0°	20°	30°	45°	60°	70°	90°
BH2	2 in-line	6.00	7.50	7.90	8.40	9.70	10.00	10.40
BH3	3 in-line	9.70	12.00	12.50	13.50	15.40	15.80	16.20
BH3T	3 @ 90	9.10	10.50	10.90	11.70	13.00	13.30	13.60
BH4	4 in-line	13.10	15.60	16.00	18.40	19.90	21.60	22.00
BH490	4 @ 90	8.50	9.00	9.30	9.90	10.50	10.70	10.90

* Multiply EPA Rating by $\frac{\text{Fixture Mount Height}}{\text{Total Pole Height}}$ = Adjusted EPA Rating



MA1 EPA Ratings for fixtures with In-Line Bracket (Only)		
Catalog #	SSB24	SSB34
SSB 12" sq. housing	1.70	2.64
SSB 16" sq. housing	2.30	3.40
SSB 23" sq. housing	3.70	5.40



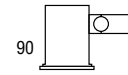
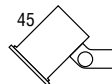
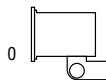
MA2 EPA ratings for 12", 16" & 23" housing with 6" Mounting Arms						
Fixture Size	STA & RTA1	STA & RTA2180	STA & RTA290	STA & RTA390	STA & RTA 3120	STA & RTA4
12"	0.58	1.22	0.98	1.51	1.56	2.08
16"	1.00	2.10	1.70	2.60	2.70	3.60
23"	2.00	4.10	n/a	n/a	n/a	n/a

MA5 EPA ratings for 12", 16" & 23" housing with 12" Mounting Arms						
Fixture Size	STA & RTA1	STA & RTA2180	STA & RTA290	STA & RTA390	STA & RTA 3120	STA & RTA4
12"	0.68	1.20	1.43	1.71	1.82	2.28
16"	1.20	2.50	3.00	3.00	3.20	4.00
23"	2.20	4.40	4.00	5.50	5.90	7.50

MA2T10 EPA ratings for 12", 16" & 23" housing with 10°/20° tilt - 6" Arms						
Fixture Size	STA1T20	STA2180T20	STA290T20	STA390T20	STA3120T20	STA4T20
12"	0.70	1.15	1.20	1.70	1.80	2.40
16"	1.30	2.10	2.20	2.30	3.10	4.40
23"	2.50	3.60	n/a	n/a	n/a	n/a

*Note: For MA2T20 EPA, Refer to 20° Column on Table to Left.

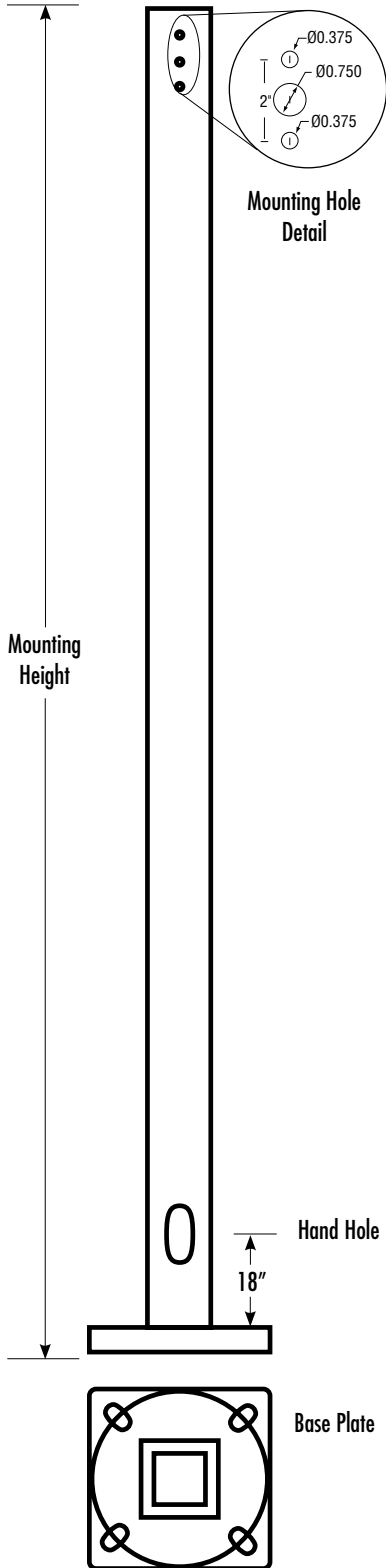
EPA ratings for fixtures with Wishbone Mount (WB) (0° tilt) w/flat lens		
	WBR	WBS
12" sq. housing	n/a	n/a
16" sq. housing	1.10	1.10
23" sq. housing	2.20	2.20



EPA ratings for FBD Series Floodlight							
Degree Tilt	0°	20°	30°	45°	60°	70°	90°
Yoke Mount	1.30	1.70	1.80	1.90	2.30	2.40	2.50
Tenon Mount (FBD-TM)	1.40	1.80	1.90	2.00	2.40	2.50	2.60
Trunnion Mount (FBD-TR)	1.40	1.80	1.90	2.00	2.40	2.50	2.60



EPA ratings for 23" FAL/FVL Series Luminaire (0° tilt) Vertical w/sag lens						
Number of Fixtures	1	2@90	2@180	3@90	3@120	4@90
6" Ext. Pole Mount arm (MA2):						
23" sq. housing	2.20	n/a	4.30	n/a	n/a	n/a
12" Ext. Pole Mount arm (MA5):						
23" sq. housing	2.40	4.20	4.60	5.70	6.10	7.70
Wishbone Mount (WB):						
23" sq. housing	2.40	n/a	n/a	n/a	n/a	n/a



Features

Shaft

Fabricated from high-grade structural steel tube, the shaft conforms to ASTM specifications. It meets or exceeds minimum yield strength of 55,000 PSI. Wall thickness is either 11 GA (0.120 wall) or 7 GA (0.180 wall) as specified (see ordering information). A reinforced hand hole is furnished with cover.

Base Plate

Fabricated from structural-quality, hot rolled steel, the base plate meets or exceeds minimum yield strength of 36,000 PSI. Bolt holes are slotted to provide flexibility on either side of bolt circle centerline.

Anchorage

Anchor bolts are made of hot rolled steel bar, having a minimum yield strength of 50,000 PSI. Bolts have a 90° bend on one end and are threaded on the other end. Bolts are galvanized 12" from the top of the thread and are furnished with two nuts and two washers.

Base Cover

ABS plastic is supplied. The two-piece cover conceals base.

Finishes

The SSP Series is available in a choice of three finishes: galvanized, electrostatically applied red oxide prime coat over two-stage cleaning process, or optional color powder coating (please specify color). Powder coat colors offer a finish that is resistant to chemicals, corrosion and abrasion, which will enhance the pole's aesthetic appeal and service life.

Fixture Mounting

Two sides of the SSP Series poles are pre-drilled. Optional 2-3/8" tenon and other mounting brackets are also available. See next page for mounting codes and mounting hole detail.

Square Steel Pole Ordering Information

Pole Height	Catalog Number	Pole EPA Ratings Base Wind Velocity (MPH) With 1.3 Wind Gust Factor			Maximum Fixture Weight (lbs) @ 80MPH	Weight (lbs)
		80	90	100		
4" Square - 11 Gauge						
10'	SSP-400Q100-(a)(b)	30.6	23.8	18.9	765	75
12'	SSP-400Q120-(a)(b)	24.4	18.8	14.8	610	90
14'	SSP-400Q140-(a)(b)	19.9	15.1	11.7	498	100
16'	SSP-400Q160-(a)(b)	15.9	11.8	8.9	398	115
18'	SSP-400Q180-(a)(b)	12.6	9.2	6.7	315	125
20'	SSP-400Q200-(a)(b)	9.6	6.7	4.5	240	140
25'	SSP-400Q250-(a)(b)	4.8	2.6	1	150	170
4" Square - 7 Gauge						
25'	SSP-400W250-(a)(b)	10.8	7.7	5.4	270	245
5" Square - 11 Gauge						
20'	SSP-500Q200-(a)(b)	17.7	12.7	9.4	443	185
25'	SSP-500Q250-(a)(b)	9.8	6.3	3.7	245	225
30'	SSP-500Q300-(a)(b)	4.7	2	n/a	150	265
5" Square - 7 Gauge						
20'	SSP-500W200-(a)(b)	28.1	21.4	16.2	703	265
25'	SSP-500W250-(a)(b)	18.5	13.3	9.5	463	360
30'	SSP-500W300-(a)(b)	10.7	6.7	3.9	267	380
35'	SSP-500W350-(a)(b)	5.9	n/a	2.5	150	740
6" Square - 7 Gauge						
30'	SSP-600W300-(a)(b)	19	13.2	9	475	520
35'	SSP-600W350-(a)(b)	12.4	7.6	4.2	310	540
40'	SSP-600W400-(a)(b)	7.2	3	n/a	180	605

Other sizes available upon request.

Pole Finish (a)

P = Prime BZ = Bronze BK = Black GLV = Galvanized

Mounting Code (b) See detail next page.

Square Steel Pole Ordering Information

Mounting Code (b)

Options

2 = 2-3/8" Tenon (SPB14 or SPB15 can be used when tenon unavailable)

DM10 = One Fixture - Direct Mount

DM290 = Two Fixtures @ 90° - Direct Mount

DM2180 = Two Fixtures @ 180° - Direct Mount

DM390 = Three Fixtures @ 90° - Direct Mount

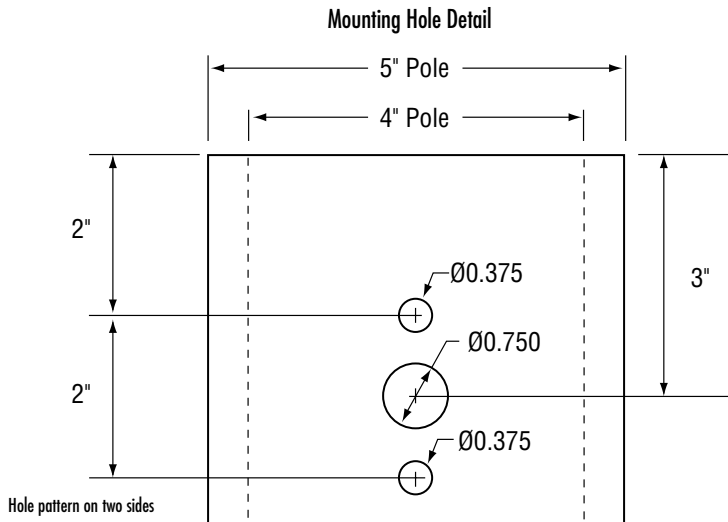
DM490 = Four Fixtures @ 90° - Direct Mount

Accessories

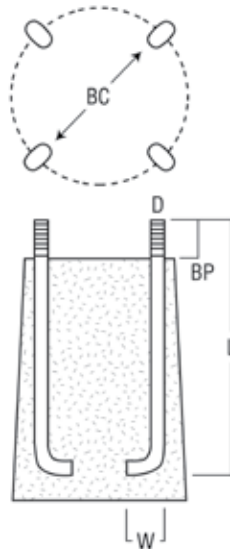
SPB14 = 2-3/8" Retrofit Tenon for 4" Pole

SPB15 = 2-3/8" Retrofit Tenon for 5" Pole

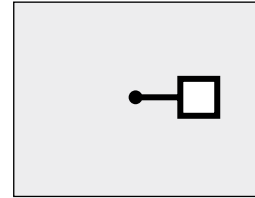
RTA3120 2-3/8" Tenon Mount for 4" Pole (Requires SPB14)



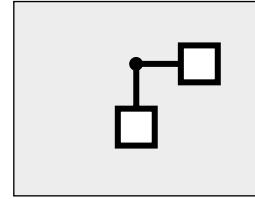
BC = Bolt Circle Diameter
BP = Bolt Projection (6" of thread)
D = Anchor Bolt Diameter
L = Anchor Bolt Length
W = Anchor Bolt Width



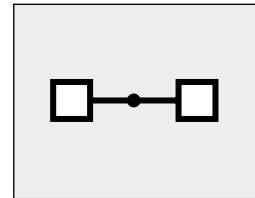
Mountings



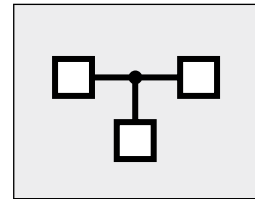
One Fixture
Ordering Code
DM10



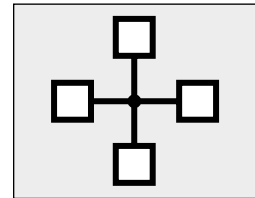
Two Fixtures
90°
Ordering Code
DM290



Two Fixtures
180°
Ordering Code
DM2180



Three Fixtures
90°
Ordering Code
DM390



Four Fixtures
90°
Ordering Code
DM490



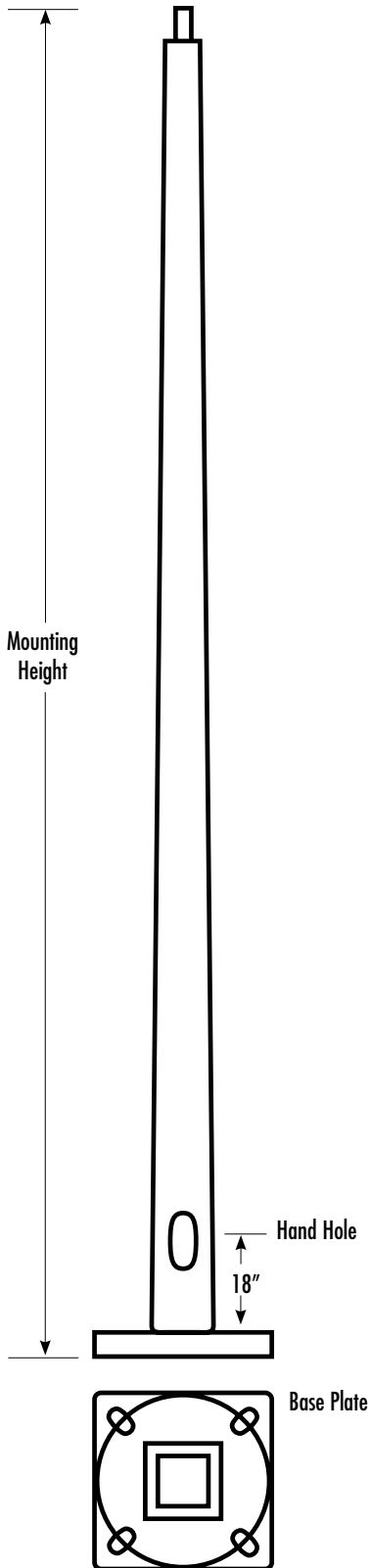
2-3/8" Tenon
Mount for 4" Pole
(11 gauge only)
Ordering Code
SPB14



2-3/8" Tenon
Mount for 5" Pole
(11 gauge only)
Ordering Code
SPB15



Three Fixtures
120°
Ordering Code
RTA3120
(Requires
SPB14 Adaptor)



Features

Shaft

The shaft is fabricated from coil stock, weldable grade, hot rolled commercial-quality carbon steel, with a guaranteed minimum yield strength of 55,000 PSI. The shaft has uniform taper of approximately 0.14" per foot and a wall thickness of 11 GA. (0.120 wall) or 7 GA. (0.180 wall) as specified. The flushed, reinforced hand hole is furnished with a cover. A ground lug is located inside the pole on the wall opposite of the hand hole.

Base Plate

Fabricated from structural-quality, hot rolled steel, the RTSP Series meets or exceeds minimum yield strength of 36,000 PSI. The base telescopes into the pole and is circumferentially welded to the pole shaft. Bolt holes are slotted to provide flexibility on either side of the bolt circle centerline.

Anchorage

The four anchor bolts are fabricated from hot rolled steel bar, having a minimum yield strength of 50,000

PSI. Bolts have a 90° bend on one end and are threaded on the other end. Bolts are galvanized 12" from the top of the thread and are furnished with two nuts and two washers. See next page for anchor bolt specifications.

Base Cover

Fabricated from heavy gauge quality carbon steel, the two-piece cover conceals the base.

Finishes

The RTSP Series is available in a choice of three finishes: galvanized, electrostatically applied red oxide prime coat over two-stage cleaning process, or optional color powder coating (please specify color). Powder coat colors offer a finish that is resistant to chemicals, corrosion and abrasion, which will enhance the pole's aesthetic appeal and service life.

Fixture Mounting

RTSP Series mounting options use either a 2-3/8" or a 2-7/8" tenon. See next page for mounting codes.

Round Tapered Steel Pole Ordering Information

Pole Height	Catalog Number	Base Outer Diameter	Pole EPA Ratings Base Wind Velocity (MPH) With 1.3 Wind Gust Factor			Maximum Fixture Weight (lbs) @ 80MPH	Weight (lbs)
			80	90	100		
11 Gauge							
20'	RTSP-590A200P2-(a)(b)	5.9	19.3	15.1	12.2	482	140
	RTSP-650A200P2-(a)(b)	6.5	24.2	19.3	15.6	605	160
25'	RTSP-590A250PL-(a)(b)	5.9	12.5	9.9	8	312	155
	RTSP-700A250P2-(a)(b)	7	20.3	16.2	13.1	507	200
30'	RTSP-660A300PL-(a)(b)	6.6	11.7	9.3	7.5	292	200
	RTSP-800A300P2-(a)(b)	8	18.9	14.9	12	473	265
35'	RTSP-730A350PL-(a)(b)	7.3	11.2	8.9	7.1	280	250
	RTSP-850A350P2-(a)(b)	8.5	18.9	15.1	12.2	472	315
	RTSP-950A350P2-(a)(b)	9.5	23.2	18.2	14.5	580	370
39'	RTSP-782A389PL-(a)(b)	7.8	10.7	8.5	6.6	267	285
	RTSP-900A389P2-(a)(b)	9	17.2	13.5	10.8	430	355
45'	RTSP-T00A450P2-(a)(b)	10	17.4	13.5	10.6	435	450
50'	RTSP-T00A500P2-(a)(b)	10	13.2	10.6	8.3	330	475
7 Gauge							
30'	RTSP-800E300P2-(a)(b)	8	33.5	27	22	838	380
39'	RTSP-900E389P2-(a)(b)	9	28.5	23	19	715	515
50'	RTSP-T00E500P2-(a)(b)	10	20.5	16.5	13.6	512	680
	RTSP-E00E500P4-(a)(b)	11	29.9	23.5	18.6	748	812
	RTSP-H00E500P4-(a)(b)	13	50.4	39.7	31.4	1260	1020
3 Gauge							
50'	RTSP-H00J500P4-(a)(b)	13	69.2	55	44.2	1730	1335

Other sizes available upon request.

Pole Finish (a)

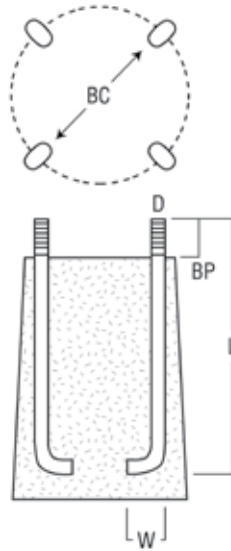
P = Prime BZ = Bronze BK = Black GLV = Galvanized

Mounting Code (b) See detail next page.

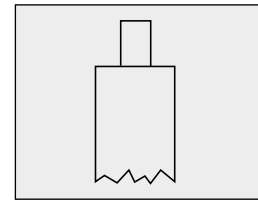
Round Tapered Steel Pole Ordering Information

Mounting Code (b)
Options
2 = 2-3/8" Tenon
3 = 2-7/8" Tenon
Accessories
RTA1 = One Fixture
RTA290 (RTA290M for 23") = Two Fixtures @ 90°
RTA2180 = Two Fixtures @ 180°
RTA3120 = Three Fixtures @ 120°
RTA390 (RTA390M for 23") = Three Fixtures @ 90°
RTA4 (RTA4M for 23") = Four Fixtures @ 90°

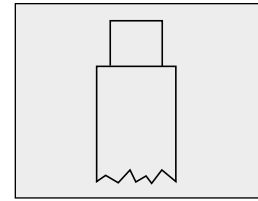
BC = Bolt Circle Diameter
 BP = Bolt Projection (6" of thread)
 D = Anchor Bolt Diameter
 L = Anchor Bolt Length
 W = Anchor Bolt Width



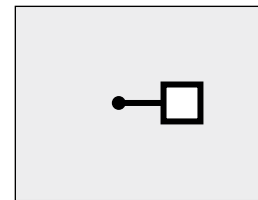
Mountings



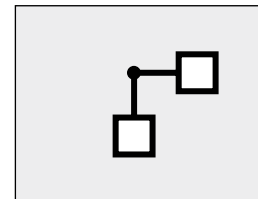
2-3/8" Tenon
 Ordering Code
2



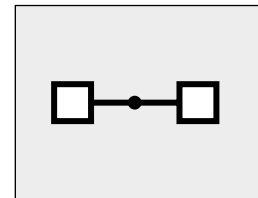
2-7/8" Tenon
 Ordering Code
3



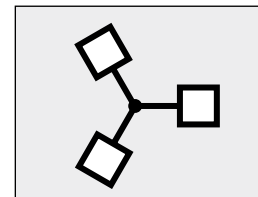
One Fixture
 Ordering Code
RTA1



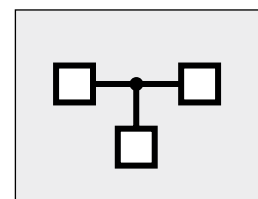
Two Fixtures
 90°
 Ordering Code
RTA290



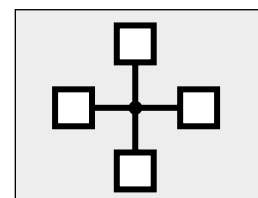
Two Fixtures
 180°
 Ordering Code
RTA2180



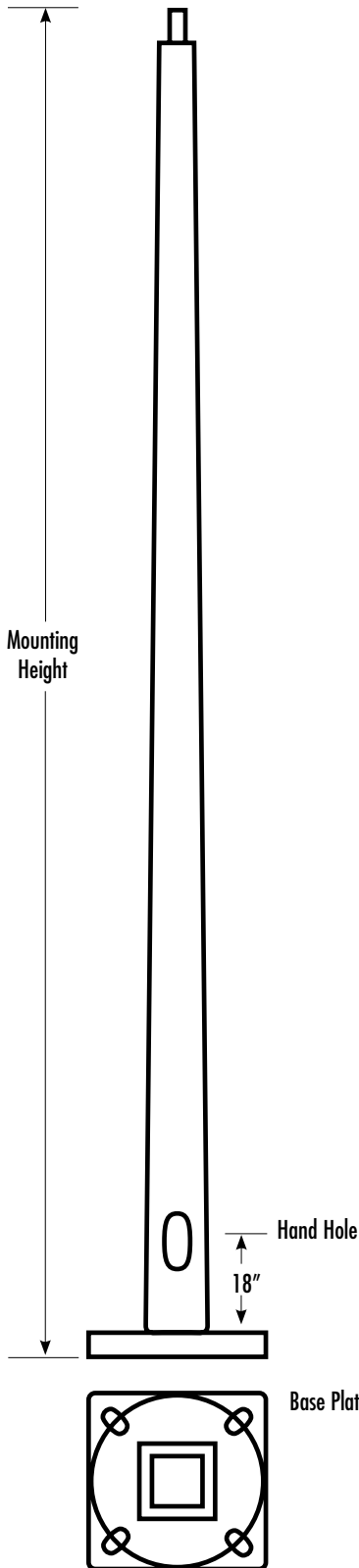
Three Fixtures
 120°
 Ordering Code
RTA3120



Three Fixtures
 90°
 Ordering Code
RTA390



Four Fixtures
 90°
 Ordering Code
RTA4



Features

Shaft

The STSP Series pole shaft conforms to ASTM A595 Grade-A and is supplied in either an 11 or 7 gauge thickness. The shaft includes a peripherally reinforced hand hole furnished with a cover and ground lug.

Base Plate

The base plate is fabricated from structural-quality, hot rolled carbon steel plate conforming to ASTM A36. The structurally-engineered base includes eight heavy wall reinforcing vertical gussets. The base telescopes and is circumferentially welded to the shaft at both the outside top and inside bottom of the base.

Anchorage

The four anchor bolts are fabricated from hot rolled steel bar, having a minimum yield strength of 50,000 PSI. Bolts have a 90° bend on one end and are threaded on the other end. Bolts are galvanized 12" from the top of the thread and are furnished with two

nuts and two washers. See next page for anchor bolt specifications and a diagram.

Base Cover

The base cover is fabricated from heavy wall aluminum construction. The two-piece cover entirely conceals the base.

Finishes

The STSP Series is available in a choice of three finishes: galvanized, electrostatically applied red oxide prime coat over two-stage cleaning process, or optional color powder coating (please specify color). Powder coat colors offer a finish that is resistant to chemicals, corrosion and abrasion, which will enhance the pole's aesthetic appeal and service life.

Fixture Mounting

STSP Series mounting options use either a 2-3/8" or a 2-7/8" tenon. See next page for mounting codes.

Square Tapered Steel Pole Ordering Information

Pole Height	Catalog Number	Base Outer Diameter	Pole EPA Ratings Base Wind Velocity (MPH) With 1.3 Wind Gust Factor			Maximum Fixture Weight (lbs) @ 80MPH	Weight (lbs)
			80	90	100		
11 Gauge							
20'	STSP-525A200-(a)(b)	5.25	18	13.8	10.7	452	155
25'	STSP-600A250-(a)(b)	6	16.8	12.6	9.5	422	205
30'	STSP-641A300-(a)(b)	6.41	13.6	9.8	7	340	260
35'	STSP-681A350-(a)(b)	6.81	10.7	7.3	4.8	269	305
39'	STSP-718A389-(a)(b)	7.18	8.6	5.4	3	215	345
7 Gauge							
20'	STSP-550E200-(a)(b)	5.5	30.5	24	19	764	235
25'	STSP-641E250-(a)(b)	6.41	28.5	22.5	18.2	713	310
30'	STSP-641E300-(a)(b)	6.41	23.6	17.9	13.7	590	375
	STSP-713E300-(a)(b)	7.13	27.4	21.6	17.3	687	431
35'	STSP-713E350-(a)(b)	7.13	23.4	17.4	13	585	475
	STSP-788E350-(a)(b)	7.88	25.7	18.8	13.8	643	540
39'	STSP-713E389-(a)(b)	7.13	19.3	14.2	10.4	483	500
45'	STSP-788E450-(a)(b)	7.88	16	11.1	7.4	400	620
	STSP-875E450-(a)(b)	8.75	23.5	16.6	11.4	588	730
50'	STSP-881E500-(a)(b)	8.81	19.4	13.2	8.7	485	780

Other sizes available upon request.

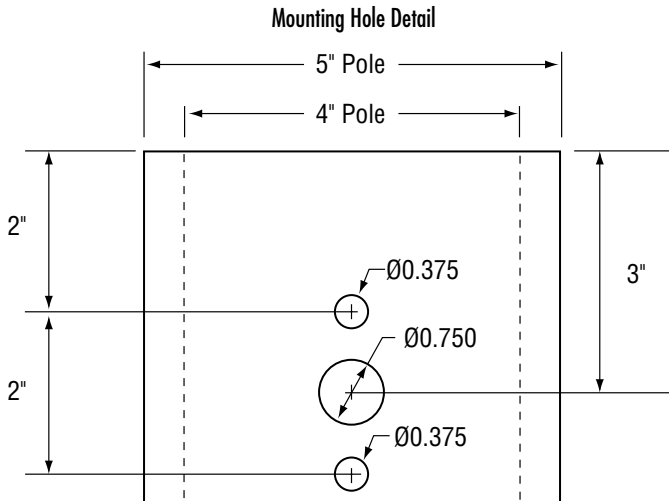
Pole Finish (a)

P = Prime BZ = Bronze BK = Black GLV = Galvanized

Mounting Code (b) See detail next page.

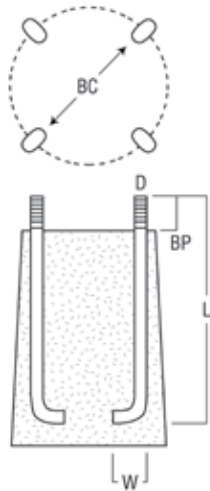
Square Tapered Steel Pole Ordering Information

Mounting Code (b)
Options
2 = 2-3/8" Tenon
DM10 = One Fixture - Direct Mount
DM290 = Two Fixtures @ 90° - Direct Mount
DM2180 = Two Fixtures @ 180° - Direct Mount
DM390 = Three Fixtures @ 90° - Direct Mount
DM490 = Four Fixtures @ 90° - Direct Mount
Accessories
RTA3120 = Adaptor for Three Fixtures @ 120° (Requires option #2, 2-3/8" tenon)

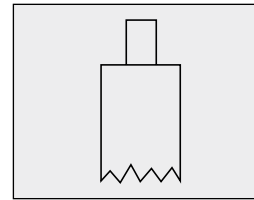


Hole pattern on two sides

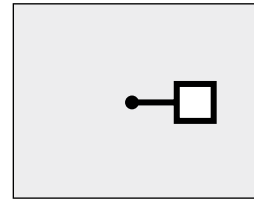
BC = Bolt Circle Diameter
 BP = Bolt Projection (6" of thread)
 D = Anchor Bolt Diameter
 L = Anchor Bolt Length
 W = Anchor Bolt Width



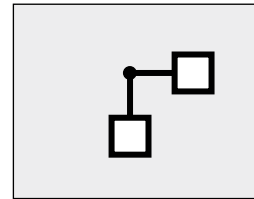
Mountings



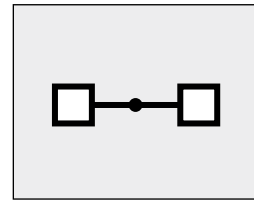
2-3/8" Tenon
 Ordering Code
2



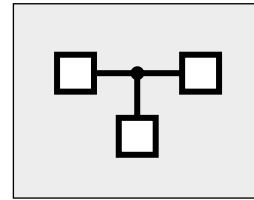
One Fixture
 Ordering Code
DM10



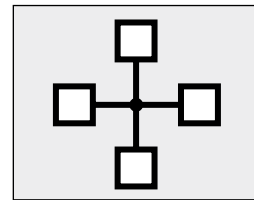
Two Fixtures
 90°
 Ordering Code
DM290



Two Fixtures
 180°
 Ordering Code
DM2180



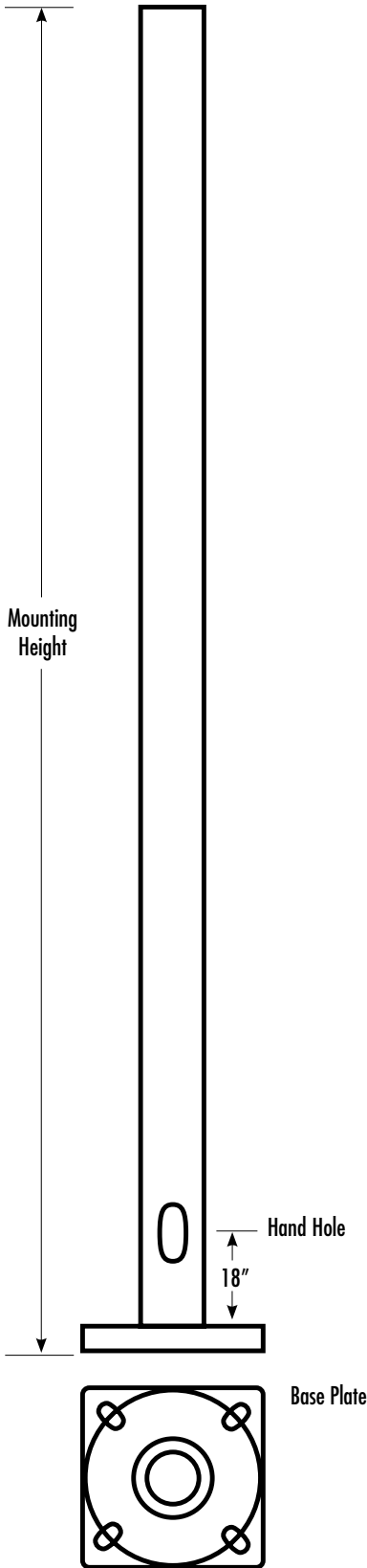
Three Fixtures
 90°
 Ordering Code
DM390



Four Fixtures
 90°
 Ordering Code
DM490



Three Fixtures
 120°
 Ordering Code
RTA3120
 (Requires option #2,
 2-3/8" tenon)



Features

Shaft

Fabricated from high-grade structural steel tube, the shaft conforms to ASTM specifications. It meets or exceeds minimum yield strength of 55,000 PSI. A reinforced hand hole is furnished with cover.

Base Plate

Fabricated from structural-quality, hot rolled steel, the base plate meets or exceeds a minimum yield strength of 36,000 PSI. Bolt holes are slotted to provide flexibility on either side of bolt circle centerline.

Anchorage

Anchor bolts are made of hot rolled steel bar, having a minimum yield strength of 50,000 PSI. Bolts have a 90° bend on one end and are threaded on the other end. Bolts are galvanized 12" from the top of the thread and are furnished with two nuts and two washers.

Base Cover

Fabricated from heavy gauge quality carbon steel, the two-piece cover conceals the base.

Finishes

The RNTP Series is available in a choice of three finishes: galvanized, electrostatically applied red oxide prime coat over two-stage cleaning process, or optional color powder coating (please specify color). Powder coat colors offer a finish that is resistant to chemicals, corrosion and abrasion, which will enhance the pole's aesthetic appeal and service life.

Fixture Mounting

RNTP Series mounting options use either a 2-3/8" or a 2 7/8" tenon. See next page for mounting codes.

Round Non-Tapered Steel Pole Ordering Information

Pole Height	Catalog Number	Base Outer Diameter	Pole EPA Ratings Base Wind Velocity (MPH) With 1.3 Wind Gust Factor			Maximum Fixture Weight (lbs) @ 80MPH	Weight (lbs)
			80	90	100		
10'	RNTP-300V100-(a)(b)	3	10	7.7	6	250	55
	RNTP-400V100-(a)(b)	4	19.1	15	12.2	480	70
	RNTP-450V100-(a)(b)	4.5	24.5	19.5	15.8	615	75
12'	RNTP-300V120-(a)(b)	3	7.7	5.8	4.4	195	60
	RNTP-400V120-(a)(b)	4	15	11.8	9.5	390	80
	RNTP-450V120-(a)(b)	4.5	19.8	15.7	12.7	495	85
14'	RNTP-300V140-(a)(b)	3	6	4.4	3.3	175	70
	RNTP-400V140-(a)(b)	4	12.2	9.4	7.6	305	90
	RNTP-450V140-(a)(b)	4.5	16.2	12.8	10.3	405	95
16'	RNTP-300V160-(a)(b)	3	4.6	3.2	2.3	125	80
	RNTP-400V160-(a)(b)	4	9.6	7.4	5.9	250	100
	RNTP-450V160-(a)(b)	4.5	13.1	10.2	8.2	330	105
18'	RNTP-300V180-(a)(b)	3	3.4	2.3	1.4	90	90
	RNTP-400V180-(a)(b)	4	7.6	5.7	4.5	190	110
	RNTP-450V180-(a)(b)	4.5	10.5	8.2	6.5	265	115
20'	RNTP-300V200-(a)(b)	3	2.4	1.4		100	100
	RNTP-400V200-(a)(b)	4	6	4.45	3.45	150	120
	RNTP-450V200-(a)(b)	4.5	8.5	6.6	5.2	215	130
25'	RNTP-500V200-(a)(b)	5	11.75	9.1	7.25	300	145
	RNTP-400V250-(a)(b)	4	2.85	1.95	1.35	100	145
	RNTP-450V250-(a)(b)	4.5	4.8	3.6	2.7	130	155
30'	RNTP-500V250-(a)(b)	5	7.25	5.5	4.25	180	180
	RNTP-450V300-(a)(b)	4.5	2.3	1.5	1	80	185
	RNTP-500V300-(a)(b)	5	4.2	3	2.25	150	210

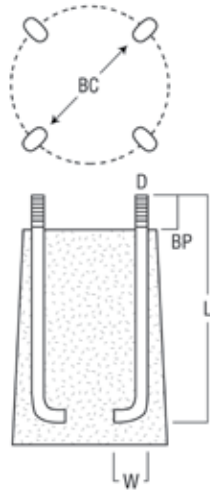
Other sizes available upon request.

Pole Finish (a)			
P = Prime	BZ = Bronze	BK = Black	GLV = Galvanized
Mounting Code (b) See detail next page.			

Round Non-Tapered Steel Pole Ordering Information

Mounting Code (b)
Options
2 = 2-3/8" Tenon
3 = 2-7/8" Tenon
Accessories
RTA1 = One Fixture
RTA290 (RTA290M for 23") = Two Fixtures @ 90°
RTA2180 = Two Fixtures @ 180°
RTA3120 = Three Fixtures @ 120°
RTA390 (RTA390M for 23") = Three Fixtures @ 90°
RTA4 (RTA4M for 23") = Four Fixtures @ 90°

BC = Bolt Circle Diameter
 BP = Bolt Projection (6" of thread)
 D = Anchor Bolt Diameter
 L = Anchor Bolt Length
 W = Anchor Bolt Width



Mountings

	2-3/8" Tenon Ordering Code 2
	2-7/8" Tenon Ordering Code 3
	One Fixture Ordering Code RTA1
	Two Fixtures 90° Ordering Code RTA290
	Two Fixtures 180° Ordering Code RTA2180
	Three Fixtures 120° Ordering Code RTA3120
	Three Fixtures 90° Ordering Code RTA390
	Four Fixtures 90° Ordering Code RTA4

Mountings

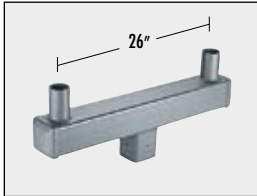
Single
(Internal mount
for 11 gauge
only)

Ordering Code
SPB14 for 4"
SPB15 for 5"



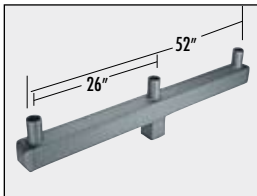
Twin

Ordering Code
SPB24



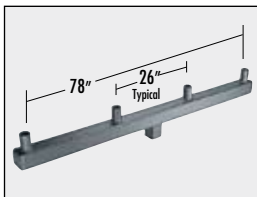
Triple

Ordering Code
SPB34



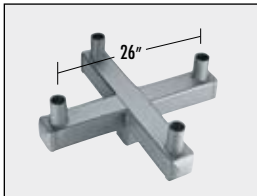
180° Quad

Ordering Code
SPB44180



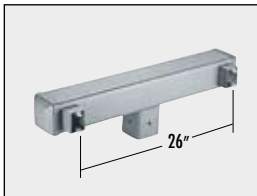
90° Quad

Ordering Code
SPB4490



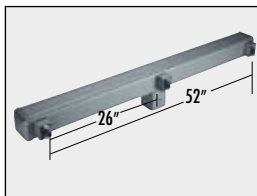
Twin Side Mount

Ordering Code
SSB24



Triple Side Mount

Ordering Code
SSB34



Dual Mount Square Series

Square Internal Mount and
2-3/8" Tenon Mount

This patented unique feature allows you to use all square series mounting options on square poles with or without 2-3/8" tenon.

SPB Series

The SPB Series is designed for use with the MA3 2" adjustable slip fitter. The tenon diameter is 2-3/8". All brackets are finished in bronze acrylic powder coating for long life. All tenons are spaced 26" apart.

2-3/8" Tenon Mount



Patent # 6,116,556

Square Internal Mount (11 gauge only)



Patent # 6,116,556

SSB Series – In Line Mount

The SSB Series has the same features as the SPB Series and comes standard with the 1-1/2" close mount arm for side mounting the 12", 16" and 23" fixtures.

Finish

All brackets are finished with a polyester bronze powder coating for longer life.

Mounting Bracket Ordering Information

Vertical Tenons	
Catalog Number/Description	Weight (lbs)
SPB14 = Single Mount 4"	5
SPB15 = Single Mount 5"	7
SPB24 = Twin Mount 4"	29
SPB34 = Triple Mount 4"	45
SPB44180 = 180° Quad 4"	67
SPB4490 = 90° Quad 4"	46

For 5" square pole internal mount use STR54 reducer.

Side Mounting Brackets	
Catalog Number/Description	Weight (lbs)
SSB24 = Twin Mount	27
SSB34 = Triple Mount	45

For 5" square pole internal mount use STR54 reducer.

Square Internal Mount Horizontal Tenons Finish

ST Series Square

The square base, with internal tenon mount, is designed to slip into either a standard 4" square, 11 gauge non-tapered steel or aluminum pole or onto a square pole with a 2-3/8" tenon.

Do not use ST290, ST390 or ST4 with 23" square fixtures. Use the STR54 5" - 4" Reducer to adapt to internal mount on 5" pole with the ST Series brackets.

STA Series With Arms

The square base, with internal tenon mount, is designed to slip into either a standard 4" square, 11 gauge non-tapered steel or aluminum pole or onto a square pole with a 2-3/8" tenon.

Available with either 6" or 12" extension arms for direct mounting to the fixture. 12" arms are required for 23" housings. For 5" poles, use STR54 Reducer.

All brackets are finished with a polyester bronze powder coating for longer life.

Drop-In Mount Tenon Adaptor Ordering Information

ST Series Mount Tenon Adaptors	
Catalog Number/Description	Weight (lbs)
ST1 = Single Mount 4" Pole (not shown)	12
ST290 = 90° Twin Mount 4" Pole	14
ST2180 = 180° Twin Mount 4" Pole	14
ST390 = 90° Triple Mount 4" Pole	16
ST4 = 90° Quad Mount 4" Pole	18

For 5" square pole internal mount use STR54 reducer.

STA Series Mount Tenon Adaptors With Arms	
Catalog Number/Description	Weight (lbs)
STA1 = Single Mount 4" Pole - 6" Arm	12
STA1M = Single Mount 4" Pole - 12" Arm	14
STA290 = 90° Twin Mount 4" Pole - 6" Arm	14
STA290M = 90° Twin Mount 4" Pole - 12" Arm	16
STA2180 = 180° Twin Mount 4" Pole - 6" Arm	14
STA2180M = 180° Twin Mount 4" Pole - 12" Arm	16
STA390 = 90° Triple Mount 4" Pole - 6" Arm	16
STA390M = 90° Triple Mount 4" Pole - 12" Arm	19
STA4 = 90° Quad Mount 4" Pole - 6" Arm	18
STA4M = 90° Quad Mount 4" Pole - 12" Arm	20

For 5" square pole internal mount use STR54 reducer.

STR Series Reducers	
Catalog Number/Description	Weight (lbs)
STR54 = 5-4" Reducer	12

Mountings



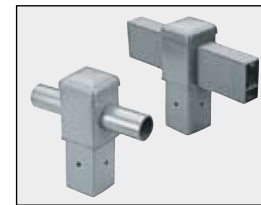
ST1 STA1

Single
Ordering Code
ST1
STA1



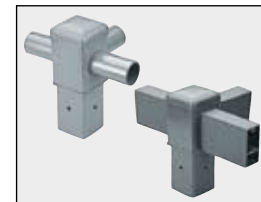
ST290 STA290

90° Twin
Ordering Code
ST290
STA290



ST2180 STA2180

180° Twin
Ordering Code
ST2180
STA2180



ST390 STA390

90° Triple
Ordering Code
ST390
STA390



ST4 STA4

90° Quad
Ordering Code
ST4
STA4



STA4

5" - 4" Reducer
(11 gauge only)
Ordering Code
STR54

**Round External Mount
With 6" or 12" Arms**

Designed to fit snugly to 2-3/8" tenons. The RTA Series uses 6" or 12" arms for direct mount to 12", 16" and 23" square fixtures. 12" arms are required for mounting 23" square fixtures at 90° and 120°.

Mounting

Uses four 5/16" allen head high tensile strength screws for securing to tenon. Cover cap snaps off for easy wiring access.

Finish

All brackets are finished with an polyester bronze powder coating for longer life.

**Round External Mount
Horizontal Tenon**

The cast aluminum RT1 mounting bracket is designed to mount on 2-3/8" - 3" tenons on round poles. Use the RT1 tenon adaptor for converting 2-7/8" pole tenons to 2-3/8".

Mounting

Uses six 5/16" allen head high-tensile strength screws for attaching to tenon. Removable wiring cover is gasketed.

Finish

All brackets are finished with an polyester bronze powder coating for longer life.

Mountings



Single
Ordering Code
6" Arm:
RTA1
12" Arm:
RTA1M



90° Twin
Ordering Code
6" Arm:
RTA290
12" Arm:
RTA290M



180° Triple
Ordering Code
6" Arm:
RTA2180
12" Arm:
RTA2180



90° Triple
Ordering Code
6" Arm:
RTA390
12" Arm:
RTA390M



120° Triple
Ordering Code
6" Arm:
RTA3120
12" Arm:
RTA3120M



90° Quad
Ordering Code
6" Arm:
RTA4
12" Arm:
RTA4M

External Mount Tenon Adaptor Ordering Information

Catalog Number/Description	Weight (lbs)
RTA1 = Single Mount 6" Arm	13
RTA1M = Single Mount 12" Arm	15
RTA290 = 90° Twin Mount 6" Arm	15
RTA290M = 90° Twin Mount 12" Arm	19
RTA2180 = 180° Twin Mount 6" Arm	15
RTA2180M = 180° Twin Mount 12" Arm	19
RTA390 = 90° Triple Mount 6" Arm	17
RTA390M = 90° Triple Mount 12" Arm	23
RTA3120 = 120° Triple Mount 6" Arm	17
RTA3120M = 120° Triple Mount 12" Arm	23
RTA4 = 90° Quad Mount 6" Arm	19
RTA4M = 90° Quad Mount 12" Arm	27

Arms for RTA Series

Catalog Number/Description	Weight (lbs)
MA2R = 6"	3
MA5R = 12"	4

All arms supplied with mounting hardware.

Presized for use with 4" Non-Tapered Poles Only – Not recommended for use with tapered poles.



Single
Ordering Code
RT1

Catalog Number/Description	Weight (lbs)
RT1 = Single Mount	4



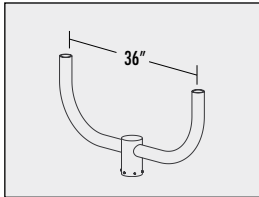
**Pole Top Luminaire Mounting
Adaptors**

For use with steel 2-3/8" O.D. tenon. Bull Horns come with a standard rust-resistant bronze finish.

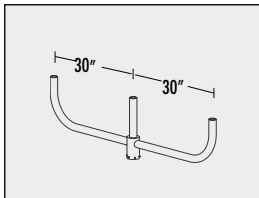
Standard Finishes

All bullhorns come standard with a polyester powder coat finish in bronze. Please consult factory for other color options.

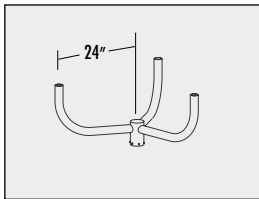
2 Arm
Ordering Code
BH2



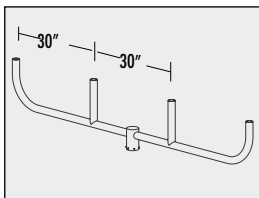
3 Arm - Straight
Ordering Code
BH3



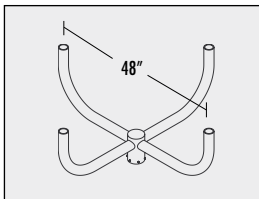
3 Arm - 120°
Ordering Code
BH3T



4 Arm - Straight
Ordering Code
BH4



4 ARM - 90°
Ordering Code
BH490



Bull Horn Ordering Information

Catalog Number/Description	Weight (lbs)
BH2 = 2 Arm, EPA Rating of 1.6	30
BH3 = 3 Arm, EPA Rating of 2.3	44
BH3T = 3 Arm - 120°, EPA Rating of 1.6	39
BH4 = 4 Arm - Straight, EPA Rating of 2.6	59
BH490 = 4 Arm - 90°, EPA Rating of 1.9	55

Outdoor Mounting Alternatives Ordering Information

Catalog Number / Description

- MP1T** = Mid-Pole Bracket for single fixture
- WP2** = Wall Mount Brackets - Horizontal 2 3/8" Tenon
- WP3A** = Wall Mount for Arm
- WP3** = Two Piece Wall Mount for Arm
- WP3S** = Wall Mounting Bracket for 12" Sq Housing Only
- WP4** = Vertical 2 3/8" Tenon
- RSY4** = Pole Bracket for Yoke Mount
- CA1** = Cross Arm Adaptor (Use with MA4 Yoke & SLF Fixture)
- FBD-TM** = Tenon Mount Adaptor for FBD
- MA6-TA** = Tenon Adaptor for FFS, FFM, & FMR
- MA3** = 2" Adjustable Slip Fitter
- MA4** = Yoke Mount

Mid-Pole Bracket Tenon Adaptor

Ordering Code **MP1T**

Two 3" X 11" square steel arms bolt securely to the side of a square steel pole and provide a 2-3/8" O.D. vertical tenon to mount a floodlight with our MA3 2" Adjustable Slip Fitter. Two 1/2" bolts (not furnished) are recommended to mount the bracket to the pole. Bolt centers are 4-1/2". A friction-fit end cap is provided to enclose the wiring chamber. NOTE: The pole must be field-drilled before installation of the Mid-Pole Bracket. Approximate shipping weight is 8 lbs.

Wall Mount Horizontal Tenon

Ordering Code **WP2**

Using the MA3 2" Adjustable Fitter, the WP2 mounts directly on a flat structure using four 3/8" bolts (not included).

Wall Mount Bracket

Ordering Code **WP3A**

The WP3A Series Bracket attaches an outdoor light, over a junction box, to any flat surface. Measures 5" X 5". Add MA1, MA2 or MA5 arms for spacing the fixture.

Two-Piece Wall Mount Bracket

Ordering Code **WP3**

This two-piece wall mount bracket allows you to mount the 5" X 7" flat steel plate to the wall. The other half is premounted to the fixture using either the MA1, MA2 or MA5 arms for different spacing. (Please order arm separately). The two parts then slip together for easy installation.

Wall Mount Bracket

For 12" Square Housing Only

Ordering Code **WP3S**

Developed for the 12" FS Series shoebox fixtures, this bracket is ideal for close mounting to a vertical structure. Supplied with 1-1/2" spacer and mounting hardware (wall mount bolts not included). Size is 5" X 7-1/2".

Wall Mount Vertical Tenon

Ordering Code **WP4**

Use with the MA3 2" Adjustable Fitter for mounting any 12", 16" or 23" housing to a flat structure (9" from wall). Recommend using four 3/8" bolts (not included).

Pole Bracket for Yoke Mount

Ordering Code **RSY4**

Use with MA4 yoke mount. Adapts to any 2-3/8" tenon. Approximate shipping weight is 5 lbs.

Cross Arm Mount Bracket

Ordering Code **CA1**

Designed to be used on wooden or steel cross arms when using a trunnion or yoke mount fixture.

Tenon Mount Adaptor for FBD

Ordering Code **FBD-TM**

Designed to be used with the FBD flood light to adapt to any 2-3/8" tenon.

1/2" Tenon Adaptor

Ordering Code **MA6-TA**

1/2" Adaptor for 2-3/8" tenon: MA6-TA used on FMS, FMM & FMR to mount on standard 2-3/8" tenon. Approximate shipping weight is 1lb.

2" Adjustable Slip Fitter

Ordering Code **MA3**

Slip-fits over a 2" pole or tenon (2.375" O.D.). Allows vertical tilt in 2.5° increments, as well as lateral rotation. Threaded knockout provided for field-installed button photocell. Approx. 2 lbs.

Yoke Mount

Ordering Code **MA4**

Ideal for wall, ground, roof, or wood pole mounting; bolts directly to almost any surface. Mounts to fixture housing from outside using 5/16" x 1" bolts. Allows vertical tilt to any angle, and double locks at 0°, 20°, 30°, 60°, 70°, or 90° tilt angle. Use RSY4 pole bracket for tenon mounting. Approx. weight 3 lbs.



MP1T



WP3S



WP2



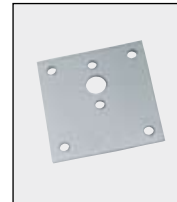
WP4



WP3



RSY4



WP3A



CA1



FBD-TM



MA6-TA



MA3



MA4

All brackets on this page are standard with our weather guard finish bronze polyester powder topcoat. Consult factory for availability of other finish colors.

Important notice regarding probe start metal halide fixtures

The **Energy Independence and Security Act of 2007** (HR6) bans the sale of virtually all probe start metal halide fixtures from 150W to 500W as of January 1, 2009. Only certified pulse start metal halide fixtures will be manufactured at that time. Those fixtures will be identified with a “circle-E” logo on the packaging and ballast as shown here:



Existing probe start metal halide fixtures manufactured before that date can be sold until inventories are depleted. Some metal halide fixtures are exempt, but the vast majority are banned.

Technical Review

Starting January 1, 2009, lighting fixtures manufactured for operation with metal halide lamps from 150W to 500W must contain ballasts as follows:

<u>Ballast</u>	<u>Minimum ballast efficiency</u>
Pulse-start metal halide ballast	88%
Magnetic probe-start ballast*	94%
Electronic ballast (not pulse-start)	90% if <250W 92% if >250W

**** Industry cannot meet efficiency standard with present day technology***

Exemptions

The standards do not apply to:

- Fixtures with regulated lag ballasts;
- Fixtures that use electronic ballasts that operate at 480V; or
- Fixtures rated only for 150W lamps, for use in wet locations, and contain a ballast rated to operate at ambient air temperatures above 50°C.

If you wish to review a copy of the law, refer to:

Energy Independence and Security Act of 2007 (HR6)

Subtitle B—Lighting Energy Efficiency

H. R. 6—3

Section 324, Metal Halide Lamp Fixtures