



HID

SPECIALTY LIGHTING

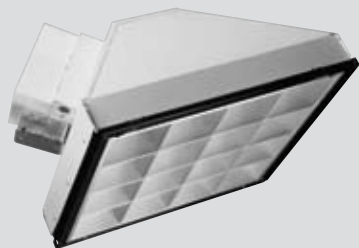
Simkar continuously strives to provide innovative technology and unique designs for specialized applications. Whether seeking a lighting solution for billboard signage, a landscape design, or a poultry house - Simkar offers the answer.

The round and square Bollards are architecturally designed fixtures that can be used for walkways, drives, entrances and other public areas. Available in three heights, these fixtures feature a removable top section that allows for ease of relamping - and are UL listed for wet locations.

Simkar's RMVG Series fixtures are typically used in low-height areas that require high quality illumination - ideal for office, commercial, or retail settings such as automotive showrooms. These fixtures feature potted ballasts for quiet sound during operation and are available with recessed louvers or lenses.

The R-CAD Series prismatic refractors and aluminum reflectors are designed to increase light levels by upgrading all mogul-based, highbay fixtures. R-CAD units deliver 20 to 25% increased light levels by replacing existing deteriorated shades. The R-CAD Series are perfect solutions for retail stores, gymnasiums, manufacturing centers, and warehouse areas.

Wattage Range:
175 - 400W (Magnetic)



Shown is RMVG housing with 16-cell louver.

Lamp Included

The HID 2 x 2 Recessed is typically used in areas that require high quality illumination. Fixture is ideal for showroom, commercial, or retail settings.

Features

Housing

The 20-gauge steel housing is coated with a high-reflectance white finish.

Ballast

A potted magnetic multi-tap ballast is supplied. Please specify voltage for factory wiring.

Lamps

Available with 175W, 250W and 400W MH and 250-400W Pulse Start MH lamps or 150W - 400W HPS mogul based, vertical burn open rated lamps. Coated lamps are standard.

Optics

Semi-specular parabolic 9-cell or 16-cell louvers are available. See photometric data below.

Thermal Protection

All fixtures are fitted with a thermal protector to avoid overheating.

Mounting Options

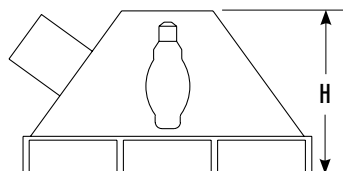
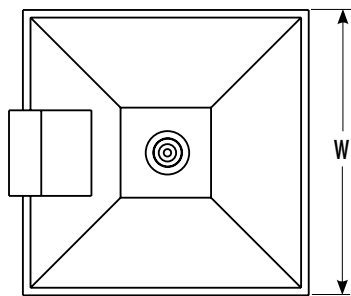
Designed to fit a standard 2' x 2' grid, using a T-type ceiling support bracket.



40 °C Ambient Rated
Listed for Recessed /Damp Locations
Contact Factory for CUL Availability

Dimensions

	Fixture Height	Fixture Width	Approx. Ship Wt.
RMVG Series	15"	23.75"	40 lbs.

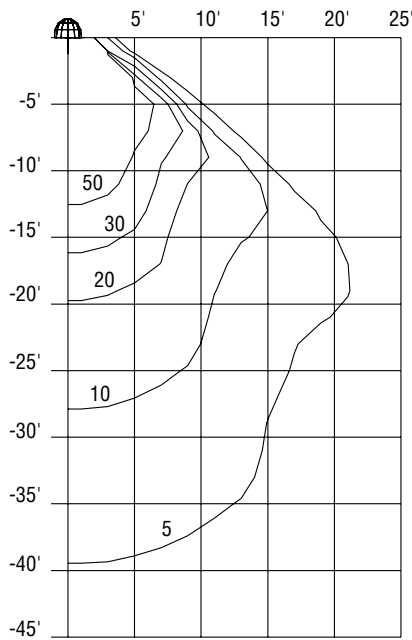


Photometric Data

(Isofootcandle Plots)

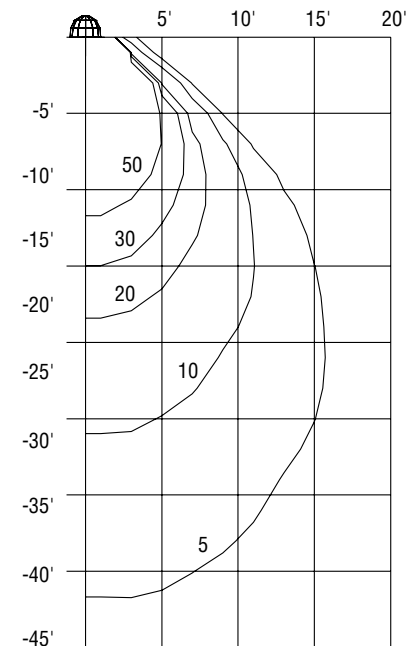
9 Cell Louver

Lamp: 350W Coated MH/PS
Lumens: 35,000



16 Cell Louver

Lamp: 350W Coated MH/PS
Lumens: 35,000

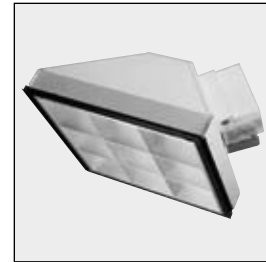


Recessed Fixture Order Information

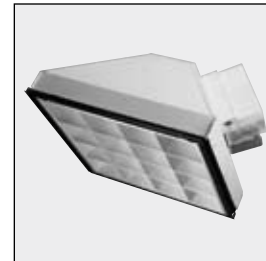
Housing Size	Lamp Type	Catalog Number
24" Square	175W MH	RMVG217-(a)(b)
Grid Mount	250W MH	RMVG225-(a)(b)
	ⓔ 250W MH/PS	RMVG925-(a)(b)
	ⓔ 320W MH/PS	RMVG932-(a)(b)
	ⓔ 350W MH/PS	RMVG935-(a)(b)
	400W MH	RMVG240-(a)(b)
	ⓔ 400W MH/PS	RMVG940-(a)(b)
	150W HPS	RMVG515-(a)(b)
	250W HPS	RMVG525-(a)(b)
	400W HPS	RMVG540-(a)(b)

Voltage (a)	Options (b) (Factory Installed)
1 = 120V	Q = Quartz Standby (Includes Quartz Lamp) L9 = 9 Cell Louver L16 = 16 Cell Louver
2 = 277V	
3 = 208V	
4 = 240V	
5 = 480V	

Louver Options



9 Cell Lens
Ordering Code
L9



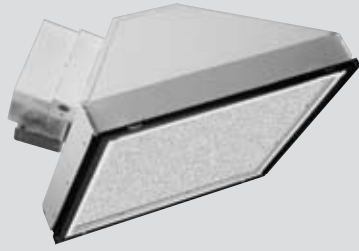
16 Cell Lens
Ordering Code
L16

Example

RMVG 2 17 2

Series	Light Source	Wattage	Voltage
RMVG = 2 x 2 Recessed Louver	2 = Open Rated MH	17 = 175W	2 = 277V

Wattage Range:
175 - 400W (Magnetic)



Shown is RMVG housing with F73 flat prismatic glass lens.

Lamp Included

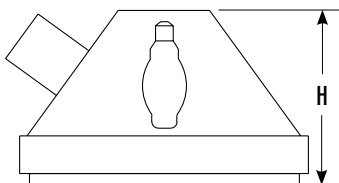
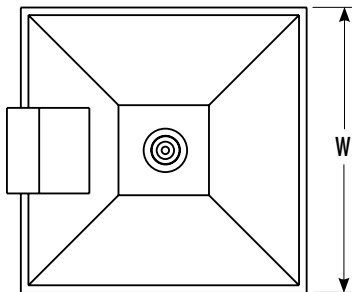
The HID 2 x 2 Recessed is typically used in areas that require high quality illumination. Fixture is ideal for showroom, commercial, or retail settings.



40 °C Ambient Rated
Listed for Recessed /Damp Locations
Contact Factory for CUL Availability

Dimensions

	Fixture Height	Fixture Width	Approx. Ship Wt.
RMVG Series	15"	23.75"	40 lbs.



Features

Housing

The 20-gauge steel housing is coated with a high-reflectance white finish.

Ballast

A potted magnetic CWA multi-tap ballast is supplied. Please specify voltage for factory wiring.

Lamps

Available with 175W, 250W and 400W MH and 175-400W Pulse Start MH lamps or 150W - 400W HPS mogul based, vertical burn lamps. Coated lamps are standard.

Optics

Fixtures are supplied with one of a variety of lenses in either flat or drop style. Flat versions are available in clear glass, C73 prismatic glass, acrylic or polycarbonate. Drop versions are available in polycarbonate or acrylic.

Thermal Protection

All fixtures are equipped with a thermal protector to avoid overheating.

Mounting Options

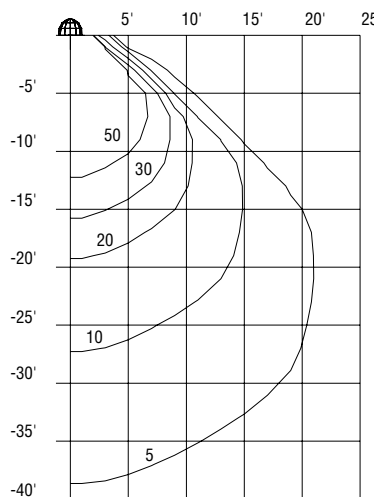
Designed to fit a standard 2' x 2' grid, using a T-type ceiling support bracket.

Photometric Data

(Isofootcandle Plots)

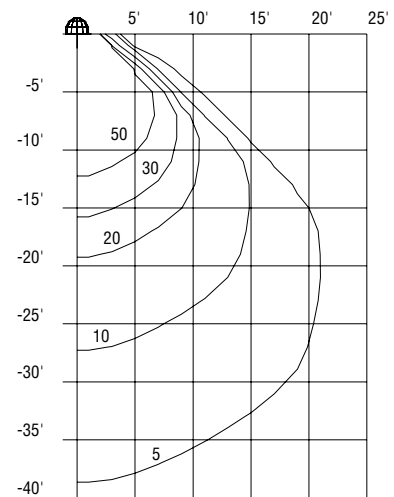
Flat Prismatic Glass Lens (C73)

Lamp: 350W Coated MH/PS
Lumens: 35,000



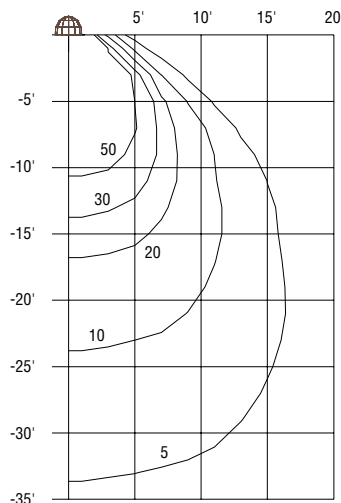
**Flat Clear Acrylic Lens
Flat Polycarbonate Lens
Flat Clear Glass Lens**

Lamp: 350W Coated MH/PS
Lumens: 35,000



Acrylic / Polycarbonate Drop Lens

Lamp: 350W Coated MH/PS
Lumens: 35,000



Recessed Fixture Order Information

Housing Size	Lamp Type	Catalog Number
24" Square	175W MH	RMVG417-(a)(b)
Grid Mount	e 175W MH/PS	RMVG817-(a)(b)
	250W MH	RMVG425-(a)(b)
	e 250W MH/PS	RMVG825-(a)(b)
	e 320W MH/PS	RMVG832-(a)(b)
	e 350W MH/PS	RMVG835-(a)(b)
	400W MH	RMVG440-(a)(b)
	e 400W MH/PS	RMVG840-(a)(b)
	150W HPS	RMVG515-(a)(b)
	250W HPS	RMVG525-(a)(b)
	400W HPS	RMVG540-(a)(b)

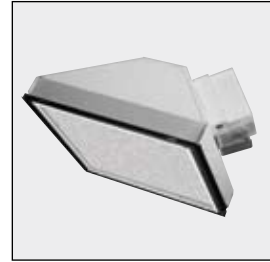
Voltage (a)	Options (b) (Factory Installed)
1 = 120V	Q = Quartz Standby (Quartz Lamp Included)
2 = 277V	F73 = Flat Prismatic Glass Lens (C73)
3 = 208V	FAL = Clear Flat Acrylic Lens
4 = 240V	FPL = Clear Flat Polycarbonate Lens
5 = 480V	FGL = Clear Flat Glass Lens
	DAL = Drop Acrylic Lens
	DPL = Drop Polycarbonate Lens

Example

RMVG 2 17 2

Series	Light Source	Wattage	Voltage
RMVG = 2 x 2 Recessed Louver	2 = MH	17 = 175W	2 = 277V

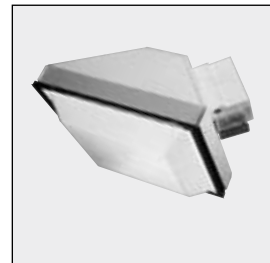
Lens Options



Flat Prismatic Glass Lens
Ordering Code **F73**



Clear Flat Glass Lens
Ordering Code
FAL (Acrylic)
FPL (Polycarbonate)
FGL (Glass)



Drop Lens
Ordering Code
DAL (Acrylic)
DPL (Polycarbonate)

Wattage Range:
35 - 70W



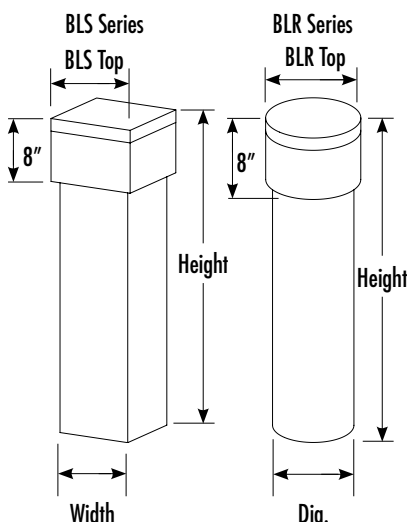
The **BL Series** are architecturally designed round and square bollards that can be used for walkways, drives, entrances and other public areas.



Listed for Wet Locations
Contact Factory for CUL Availability

Dimensions

	Fixture Pole Size	Fixture Top Size	Fixture Height	Approx. Ship Wt.
BLR Series	6"	7"	24"/36"/42"	28 lbs.
BLS Series	6"	7"	24"/36"/42"	25 lbs.



Features

Housing

Designed from durable seamless extruded aluminum, bollards are offered in three pole heights in either round or square styles. A removable top section allows for ease of relamping. A bronze polyester powder coat is standard on all bollards, but optional white or black may be ordered. Contact factory for other color options.

Ballast

Metal halide fixtures are supplied with high reactance, high power factor multi-tap ballasts. All high pressure sodium fixtures are provided with a 120V reactor ballast (optional HPF available) or a high reactance, high power factor multi-tap ballast.

Lamps

High pressure sodium fixtures in 35W, 50W and 70W come standard with a medium base lamp. Metal halide fixtures are provided with open rated medium base lamps.

Mounting Options

Each bollard is furnished with a heavy-duty aluminum base plate which mounts to the ground using the included 3-3/8" x 6" anchor bolts and leveling nuts.

BLR Series Round Bollard Order Information

Pole Diameter	Lamp Type	Catalog Number
6" round pole	50W MH/PS	BLR(x)905-M*(b)
	70W MH/PS	BLR(x)907-M*(b)
	35W HPS (120V NPF)	BLR(x)503-1*(b)
	50W HPS (120V NPF)	BLR(x)505-1*(b)
	50W HPS	BLR(x)505-M*(b)
	70W HPS (120V NPF)	BLR(x)507-1*(b)
	70W HPS	BLR(x)507-M*(b)

* M = Multi-tap tapped @ 277V; 1 = 120V (30-150 HPS only (NPF))

BLS Series Square Bollard Order Information

Pole Diameter	Lamp Type	Catalog Number
6" square pole	50W MH/PS	BLS(x)905-M*(b)
	70W MH/PS	BLS(x)907-M*(b)
	35W HPS (120V NPF)	BLS(x)503-1*(b)
	50W HPS (120V NPF)	BLS(x)505-1*(b)
	50W HPS	BLS(x)505-M*(b)
	70W HPS (120V NPF)	BLS(x)507-1*(b)
	70W HPS	BLS(x)507-M*(b)

* M = Multi-tap tapped @ 277V; 1 = 120V (30-150 HPS only (NPF))

BL Series Fixture Heights and Options

Fixture Height (x)	Options (b) (Factory Installed)
A = 24" total fixture height	HPF = High Power Factor (120V HPS only)
B = 36" total fixture height	WT = White Housing
C = 42" total fixture height	BK = Black Housing

Wattage Range:
70 to 150 W



Lamp Included

Available in 120V, The Producer is a versatile and durable fixture designed for difficult and harsh environments such as poultry houses and wash down, heavy-duty applications.

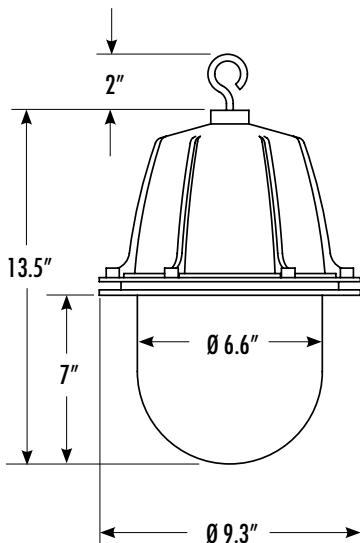


40 °C Ambient Rated
Listed for Wet Locations

Contact Factory for CUL Availability

Dimensions

	Fixture Height	Fixture Width	Fixture Diameter
PR Series	13.5"	9.3"	9.3"



Features

Housing

The cast aluminum housing is electrostatically powder coated to withstand extreme environments associated with poultry houses.

Ballast

The fixture includes a normal power factor (NPF) ballast.

Lamps

The Producer comes standard with HPS lamps.

Optics

A heavy-duty prismatic borosilicate bell glass is mounted to the housing using a cast aluminum ring with stainless steel hardware.

Wiring

All units are supplied with a 6' SOW 16/3 cord. A 120V plug is available in twist-lock or straight blade.

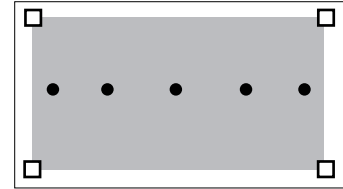
Gasket

The Producer incorporates watertight neoprene gaskets for use in wet locations.

Mounting Options

A stainless steel hook is standard for hanging the fixture from a structure.

Typical Poultry House
PR Series



100W High Pressure Sodium

Mounting Height: 15'

Spacing: 20'

Average 7 footcandles

150W High Pressure Sodium

Mounting Height: 15'

Spacing: 20'

Average 10 footcandles

PR Series Order Information

Housing Size	Lamp Type	Hook & Cord	Hook, Cord, & Plug
9"	70W	PR1507-1*	PR2507-1*(b)
	100W	PR1510-1*	PR2510-1*(b)
	150W	PR1515-1*	PR2515-1*(b)

*120V

Options (b) (Factory Installed)

SB = Straight Blade Plug (120V)
TL = Twist + Lock Plug (120V NEMA L5-15P)*

*Standard on fixtures with hook, cord, & plug

Number of Fixtures Per Circuit (Maximum)

Lamp Type	Voltage	Power Factor	Based On			
			Operating Amps		Nominal Amps	
			Fixtures 20 (A)	Circuit 30 (A)	Fixture Oper. Amps	Amps Start. Amps
LU70	120	NPF	9	14	1.7	3.2
	120	HPF	20	30	0.8	2.1
LU100	120	NPF	6	10	2.3	4.8
	120	HPF	13	20	1.2	2.5
LU150	120	NPF	4	6	3.5	4.8
	120	HPF	9	14	1.7	4.1

Wattage Range:
175 to 400 W



Lamp Included

This narrow cutoff luminaire is designed to illuminate signs or billboards with minimum light spill.

Features

Housing

The sleek square 16" die cast aluminum housing with flush doorframe and rounded edges comes standard with a bronze polyester powder coat. Other colors are available upon request.

Ballast

All fixtures are supplied with a high power factor constant wattage ballast in multi-tap or 480V. All units are supplied with a 36" SOW 16/3 cord. If no voltage is specified, cord is connected to the highest voltage.

Optics

An IES Type IV narrow cutoff distribution that minimizes light spill.

Lamps

All FSM Series fixtures are supplied with a 175-400W mogul base lamp.

Gasket

Complete silicone gasketing around lens frame and at mounting provide a watertight seal. Fixture is recommended to have a minimum 1° tilt on luminaire face.

EPA Ratings

Because of its unique design, lower EPA ratings are achieved, resulting in lower pole costs. See page 252 for EPA Ratings.

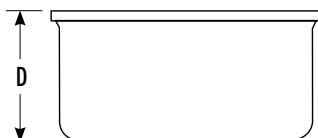
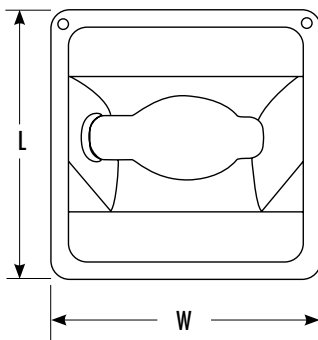
Mounting Options

For a complete description of mounting options, refer to information beginning on page 254.

 55 °C Ambient Rated
Listed for Wet Locations
Contact Factory for CUL Availability

Dimensions

	Fixture Length	Fixture Width	Fixture Depth	Approx. Ship Wt.
FSM Series	16.4"	16.4"	7.0"	38 lbs.

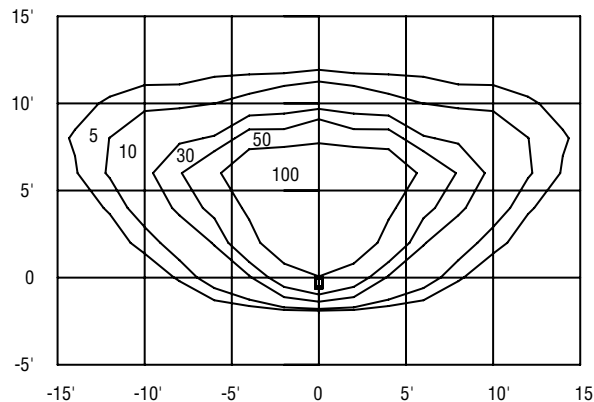


Photometric Data

(Isofootcandle Plots)

16" Sign Light

Cat #: FSM3440
Lumens: 32,000
Mounting Distance: 5'
Certified Test Report: LTL06474
IES File: FSM440.IES
Tilt: 1100



Sign Light Order Information

Housing Size (sq.)	Lamp Type	Catalog Number	Mountings (order separately)
16"	175W MH	FSM8417-(a)(b)	MA3 = 2" Adjustable Slip Fitter MA4 = Yoke Mount
	250W MH	FSM8425-(a)(b)	
	400W MH	FSM8440-(a)(b)	
	200W MH/PS	FSM8820-(a)(b)	
	250W MH/PS	FSM8825-(a)(b)	
	320W MH/PS	FSM8832-(a)(b)	
	350W MH/PS	FSM8835-(a)(b)	
	400W MH/PS	FSM8840-(a)(b)	
	250W HPS	FSM8525-(a)(b)	
	400W HPS	FSM8540-(a)(b)	

Sign Light Voltage, Options, and Accessories

Voltage (a)	Options (b) (Factory Installed)	Accessories: (Field Installed)
5 = 480V M = Multi-tap (tapped @ 277) M5 = 120 - 480V 400W MH only (tapped @ 480V)	Q = Quartz Standby (includes lamp) P = Photo Control - Specify Voltage in Suffix (a) (Twist + Lock receptacle & matching photocell supplied.) WT = White Housing BK = Black Housing Custom Colors Available; contact factory for pricing and delivery. <u>Fusing</u> (x)F = Single - Specify voltage (x): 1 = 120V; 2 = 277V (x)J = Dual - Specify voltage (x): 3 = 208V; 4 = 240V; 5 = 480V	WG-16 = Wire Guard for 16" housing BLS-16 = Backlight Shield for 16" housing (not shown) VS-16 = Vandal Shield for 16" housing

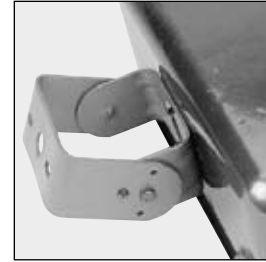
Example

FMS	8	8	32	M
Series	Mounting	Light Source	Wattage	Voltage
FMS = Sign Light	8 = No Mounting	8 = MH/PS	32 = 320W	M = Multi-tap

Mountings and Accessories



2" Adjustable Slip Fitter
Ordering Code MA3



Yoke Mount
Ordering Code MA4



Wire Guard
Ordering Code WG-16



Vandal Shield
Ordering Code VS-16

R-CAD™ 800 Series
Prismatic Refractor

The R-CAD™ Series Prismatic Refractor is designed to increase light levels by upgrading all mogul-based, high bay fixtures, especially those currently using metal reflectors. Units deliver 20% higher light levels with a smooth and even light distribution, making them ideal for retail stores, gymnasiums, distribution centers, manufacturing centers and aisleways.



Features

Refractor

The clear acrylic prismatic refractor provides over 90% efficiency, with approximately 15 - 20% uplight. Flat and conical drop type lens enclosures are available. The Series 822 and 825 units are optionally available in a totally enclosed design.

Optics

Optics are available in 16", 22" and 25". The socket position is available in a non-adjustable (NA) mode or fully adjustable mode using the patented Twist-N-Lock™ system that allows for a choice of light distribution patterns. With its 15 - 20% uplight capability, the visual brightness of most areas is greatly increased while shadows virtually disappear.

R-CAD™ SDC Series
Faceted Reflector

The R-CAD™ SDC Series Faceted Reflector is designed to increase light levels by 20 to 25% by replacing deteriorated aluminum reflectors of existing fixtures with a hard anodized faceted aluminum high-efficiency designed reflector. An effective and low cost lighting upgrade, the R-CAD™ SDC Series is ideal for retail stores, gymnasiums, manufacturing centers and warehouse areas.



Features

Reflector

Available in 17" and 22", the R-CAD™ SDC faceted reflector is glass-lined to resist dirt build-up and simplify cleaning with just water. A glass lens and a dust-tight design are available. A totally enclosed design is available when using either the SDC-17 Glass or SDC-22 Glass options.

Optics

Optics are available in 17" and 22". The socket position is available in a non-adjustable (NA) mode or fully adjustable mode using the patented Twist-N-Lock™ system (see photo) that allows for a choice of light distribution patterns. With the wide spread beam pattern (1.7 space to mounting height ratio) and reduced glare faceted reflector, the R-CAD™ delivers light over a wide area with minimized fixture visibility.

Mounting Options

The patented C40 and C41 screw-in adaptor makes retrofitting a snap. No mounting hardware is required. Simply remove the existing reflector and screw-in the RCAD™ to the mogul-based socket.

R-CAD™ EB Series
Spun Aluminum Reflector

The R-CAD™ EB Series is designed to increase light levels by 20 to 25% by replacing deteriorated reflectors of existing fixtures with an aluminum reflector that provides a smooth, even beam pattern with an 80% efficiency rate. An effective and low cost lighting upgrade, the R-CAD™ EB Series are ideal for retail stores, gymnasiums, manufacturing centers and warehouse areas.



Features

Reflector

The R-CAD™ EB Series is a spun aluminum reflector with a glass lens option.

Optics

Optics are available in 14", 16" and 22". The socket position is available in a non-adjustable (NA) mode or fully adjustable mode using the patented Twist-N-Lock™ system (see photo) that allows for a choice of light distribution patterns.

Mounting Options

The patented C40 and C41 makes retrofitting a snap. No mounting hardware is required. The compact size of the R-CAD™ Series allows installation in most cases without the necessity of removing the existing reflector. If necessary, simply remove the existing reflector and screw the R-CAD™ into the mogul-based socket.

Please contact the factory for further technical information.

R-CAD™ 800 Series
Prismatic Refractor

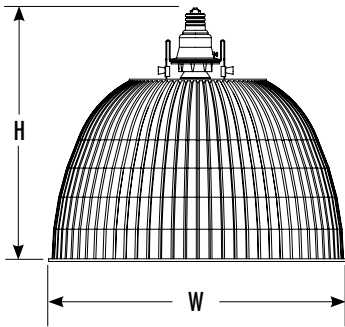
R-CAD™ SDC Series
Faceted Reflector

R-CAD™ EB Series
Spun Aluminum Reflector

Dimensions

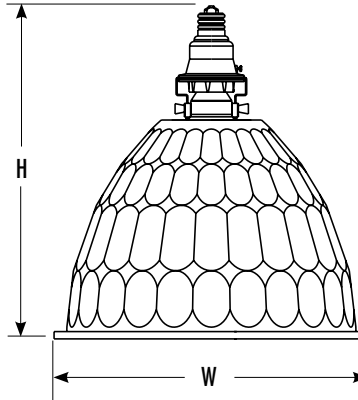
	Fixture Height		Fixture Width	w/ Drop Lens - Add
	Min. ¹	Max. ²		
816 Series	14.8"	18.4"	16"	3.5" TO H
822 Series	17.4"	21.0"	22"	3.0" TO H
825 Series	18.0"	21.6"	25"	3.0" TO H

¹ Lowest Socket Position
² Highest Socket Position



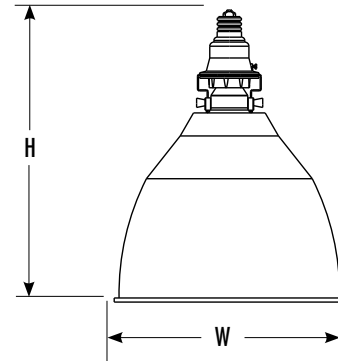
	Fixture Height		Fixture Width	Approx. Ship Wt.
	Min. ¹	Max. ²		
SDC17 Series	17.75"	18.75"	17"	2 lbs.
SDC22 Series	17.75"	18.75"	22"	2 lbs.

¹ Lowest Socket Position
² Highest Socket Position



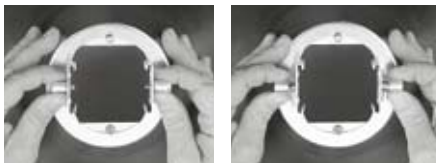
	Fixture Height		Fixture Width	Approx. Ship Wt.
	Min. ¹	Max. ²		
EB14 Series	17.25"	18.25"	14"	2 lbs.
EB16 Series	17.55"	18.55"	16"	2 lbs.
EB22 Series	19.5"	20.5"	22"	2 lbs.

¹ Lowest Socket Position
² Highest Socket Position



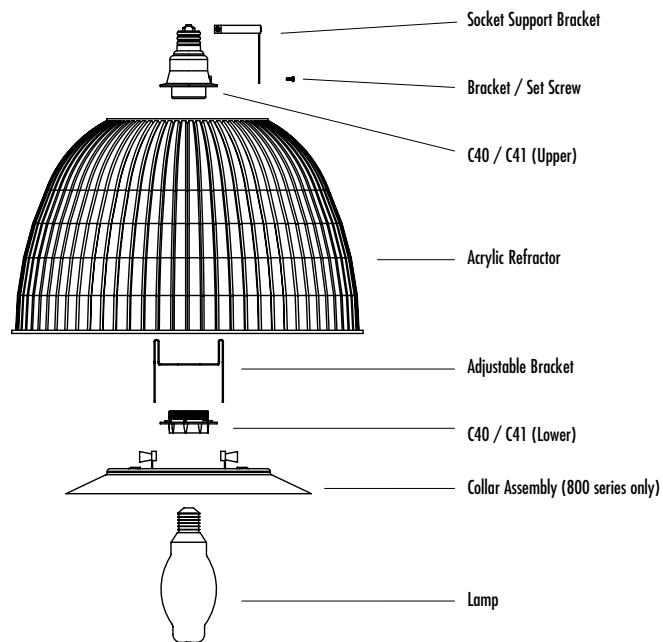
C41 Socket Adaptor

A standard socket accepts both open- and enclosed-rated lamps. Our patented C41 adaptor restricts existing fixtures to operate with open-rated lamps only. This feature eliminates the danger associated with improper lamp usage or violent end-of-life lamp risks. (Option V)



Twist-N-Lok™ - Locked

Twist-N-Lok™ - Open



Typical installation of R-CAD series reflectors

Please contact the factory for further technical information.

R-CAD™ 816, 822 & 825 Series Order Information

Refractor Size	Lamp Wattage	Catalog Number	Lamp NOT Included
16"	175-400W*	RCAD816-(a)	with adjustable bracket
	175-400W**	RCAD816NA-(a)	without adjustable bracket
22"	250-400W*	RCAD822-(a)	with adjustable bracket
	250-400W*	RCAD822NA-(a)	without adjustable bracket
25"	250-1000W* ††	RCAD825-(a)	with adjustable bracket
	250-1000W* ††	RCAD825NA-(a)	without adjustable bracket

* Enclosed Rated Lamps require a bottom lens + Do Not Enclose Over 250W

†† Do Not Enclose Over 400W, 1000W Open Bottom Only & 25°C Ambient Maximum

Options (a)	Accessories (Field Installed)
V = C41 Adaptor for Restricted Lamps G = Enclosed & Dust-Tight (22" & 25" Only 400W Max)	<u>16" Accessories</u> 816WG-R = 16" wrap-around wire guard assembly 816FLA = Flat acrylic lens for 816 with ring (250 watt maximum) (not shown) 816DLA = Drop lens with ring (250 watt maximum) 816CLA = Conical lens with ring (250 watt maximum) <u>22" Accessories</u> 822WG = 22" Wire guard, with relamping door 822FLA-HR = Flat acrylic for 822 with ring (400 watt maximum) (not shown) 822DLA-HR = Drop lens for 822 with ring (400 watt maximum) 822CLA-HR = Conical lens with ring (400 watt maximum) <u>25" Accessories</u> 825S-CLA = Inverted conical lens with ring (400 watt maximum) (not shown) 825A-CLA = Aislelighter lens with ring (RCAD825 up to 400W only) (not shown)

R-CAD™ SDC17 & SDC22 Series Order Information

Refractor Size	Lamp Wattage	Catalog Number	Lamp NOT Included
17"	175-400W*	RCADSDC17-(a)	Faceted reflector w/ C40 screw-in conversion adaptor
	175-400W*	RCADSDC17NA-(a)	Faceted reflector (Non-adjustable)
22"	320-1000W**	RCADSDC22-(a)	Faceted reflector w/C40 screw-in conversion adaptor
	320-1000W**	RCADSDC22NA-(a)	Faceted reflector (Non-adjustable)

Options (a)	Accessories (Field Installed)
V = C41 Adaptor for Restricted Lamps G = Enclosed & Dust-Tight (22" & 25" Only 400W Max)	<u>17" Accessories</u> SDC17LA = Flat Glass Lens - 17" SDC17LA / SDC17DG = Guard for SDC17 (lens assembly required) SDC17WG = Wrap guard for SDC17 <u>22" Accessories</u> SDC22LA = Flat Glass Lens - 22" SDC22LA / EB22DG = Guard for SDC22 (lens assembly required) EB22WG = Wrap guard for SDC22

R-CAD™ EB Series Order Information

Refractor Size	Lamp Wattage	Catalog Number	Lamp NOT Included
14"	175-400W*	RCADEB14-(a)	Faceted reflector w/ C40 screw-in conversion adaptor
	175-400W*	RCADEB14NA-(a)	Faceted reflector (Non-adjustable)
16"	175-450W*	RCADEB16-(a)	Faceted reflector w/C40 screw-in conversion adaptor
	175-450W*	RCADEB16NA-(a)	Faceted reflector (Non-adjustable)
22"	400-1000W*	RCADEB22-(a)	Faceted reflector (Non-adjustable)
	400-1000W*	RCADEB22NA-(a)	

Options (a)	Accessories (Field Installed)
V = C41 Adaptor for Restricted Lamps G = Enclosed & Dust-Tight (22" & 25" Only 400W Max)	<u>14" Accessories</u> EB14G-HR = Wire Guard for RCAD EB14 (with ring) EB14LA-HR = Glass Lens for RCAD EB14 <u>16" Accessories</u> EB16WG = Wire Guard for RCAD EB16 EB16LA = Glass Lens for RCAD EB16 <u>22" Accessories</u> EB22DG-R = Wire Guard for RCAD EB22 (with ring) EB22GLA = Glass Lens for RCAD EB22

*Enclosed Rated Lamps Require Bottom Lens + Enclosed 1000W Must use Reduced Jacketed (BT37) Lamp with Glass lens accessory

See page 188 for complete listing of lens assemblies and guard options.

Coated Lamps Recommended; Metal Halide and Pulse Start Open Rated Lamps (using V-Option) are Available.

Refer to page 178 for Ambient Temperature Rating.

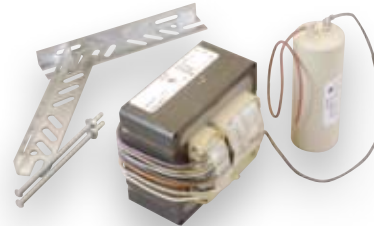
RETROFIT
Save Money • Save Energy



Simkar offers a range of products intended to upgrade or replace your current technology with the goals of ease of installation, cost efficiency, and energy savings.

HID Lamp/Ballast Kits

- Complete kit ensures compatible lamp and ballast.
- Ergonomic carrying handles.
- Stackable outer carton fits into compact areas for better space management and easy transporting.
- Pre-wired capacitor and ignitor (if necessary) eliminate common wiring errors.
- High quality long-life HID lamp.
- Durable steel mounting brackets fit many mounting configurations.
- Color coded for quick lamp source identification.
- UL recognized components.



Lamp and Ballast Kit Order Information

Series	Light Source	Option	Wattage		Special Requirement	Voltage	Pulse Start
RK	M = Metal Halide S = High Pressure Sodium H = Mercury Vapor	RCADEB14-(a)	35 = 35W	320 = 320W	Magul Base (standard) MED = Medium Base SX = High Output SXH = High Output Horizontal Burn Reduced Jacketed Lamp, consult factory.	120 = 120V	PS = Pulse Start (only available on RKM)
			50 = 50W	350 = 350W		277 = 277V	
			70 = 70W	400 = 400W		480 = 480V	
			100 = 100W	450 = 450W		M = 120/208/240/277 Volt	
			150 = 150W	750 = 750W		M5 = 120/208/240/277/480 Volt	
			175 = 175W	875 = 875W			
			200 = 200W	1000 = 1000W			
			250 = 250W	1500 = 1500W			
			300 = 300W				

For our complete Lamp/Ballast Kit offering, please contact your Simkar representative.

Lamp not included



The RC Series is ideal for use with the JLC remote shade assemblies or any RSA Optical assembly.

Features

Housing

The anodized, extruded aluminum housing is designed with heat dissipating fins and is environmentally sealed. UL listed for damp locations. UL listed for wet locations must be special ordered.

Ballast

- 175 - 1000W metal halide
- 50 - 450W Pulse Start metal halide
- 35 - 400W high-pressure sodium

Wiring

Two 3/4" holes are provided at one end of the ballast enclosure for wiring. When water-tight connections are used, the ballast enclosure is UL listed for wet locations.

Mounting Options

A notched heavy gauge aluminum strap is attached to the back of all enclosures to aid installation on vertical surfaces.

Metal Halide Distance	Gauge*
Up to 50 ft.	16
50 to 100 ft.	14
100 to 200 ft.	12
200 to 300 ft.	10

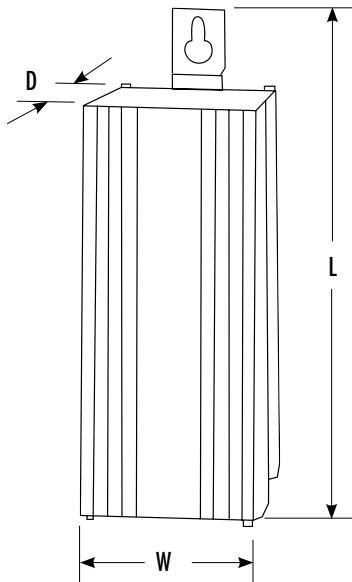
**Recommended wire gauge to remote lamp*



Listed for Damp and Wet Locations
Contact Factory for CUL Availability

Dimensions

	Fixture Length	Fixture Width	Fixture Depth	Approx. Ship Wt.
9" RC Series				
35W-150W	9"	6.5"	5"	20 lbs.
11" RC Series				
50W-175W	11"	6.5"	5"	25 lbs.
14" RC Series				
250W-1000W	14"	6.5"	5"	30 lbs.



Remote Ballast Enclosure Order Information

Lamp Type	Ordering Code	Watts	Volts	Max Btl Distance	Housing Size
Metal Halide					
	RCMX17M*(b)	175	MT	*	11"
	RCMX175*(b)	175	480	*	11"
	RCMX25M*(b)	250	MT	*	14"
	RCMX255*(b)	250	480	*	14"
	RCMX40M*(b)	400	MT	*	14"
	RCMX405*(b)	400	480	*	14"
	RCMX99M*(b)	1000	MT	*	14"
	RCMX995*(b)	1000	480	*	14"
Pulse Start Metal Halide					
	RCPX05M*(b)	50	MT	50'	11"
	RCPX07M*(b)	70	MT	50'	11"
	RCPX10M*(b)	100	MT	50'	11"
	RCPX15M*(b)	150	MT	50'	11"
	RCPX17M*(b)	175	MT	10'	11"
	RCPX20M*(b)	200	MT	10'	11"
	RCPX205*(b)	200	480	10'	11"
	RCPX25M*(b)	250	MT	10'	14"
	RCPX255*(b)	250	480	10'	14"
	RCPX32M*(b)	320	MT	15'	14"
	RCPX325*(b)	320	480	10'	14"
	RCPX35M*(b)	350	MT	15'	14"
	RCPX355*(b)	350	480	15'	14"
	RCPX40M*(b)	400	MT	15'	14"
	RCPX405*(b)	400	480	15'	14"
	RCPX45M*(b)	450	MT	15'	14"
	RCPX455*(b)	450	480	15'	14"
High Pressure Sodium					
	RCSX031*(b)	35	120	10'	9"
	RCSX051*(b)	50	120	10'	9"
	RCSX05M*(b)	50	MT	10'	11"
	RCSX071*(b)	70	120	10'	9"
	RCSX07M*(b)	70	MT	10'	11"
	RCSX101*(b)	100	120	10'	9"
	RCSX10M*(b)	100	MT	10'	11"
	RCSX151*(b)	150	120	10'	9"
	RCSX15M*(b)	150	MT	10'	11"
	RCSX25M*(b)	250	MT	25'	14"
	RCSX255*(b)	250	480	25'	14"
	RCSX40M*(b)	400	MT	25'	14"
	RCSX405*(b)	400	480	25'	14"

*See Voltage below

Remote Ballast Enclosure Voltages, and Options

Voltage	Accessories (Field Installed)
1 = 120V	P = Twist + Lock Plug (change M to desired voltage on Multi-Tap) W = Wet location HPF = High Power Factor (x)(x) = Power/Lamp Cord (specify length in feet)
2 = 277V	
3 = 208V	
4 = 240V	
5 = 480V	
tapped @ 480V	
M = Multi-Tap	
tapped @ 277V	

See page 286 for complete listing of lens assemblies and guard options.

*Enclosed Rated Lamps Require Bottom Lens

Lamp not included



The **RJ Series** is ideal for use where heat is a problem and ballast must be operated separately from the light source. (See chart for maximum distance.)

Features

Housing

Heavy-duty cast aluminum housing features heat-dissipating fins. Available in two sizes.

Ballast

- 175 - 1000W metal halide
- 50 - 450W Pulse Start metal halide
- 35 - 1000W high-pressure sodium

Wiring

Ballasts can be supplied with a 3/16 SOW 105° C cord to any specified length.

Optics

RJ Series must be used with an RSA optical assembly adaptor to operate with all high bay and low bay shades. See page 287 for more information. For use with the mini high bay shade (JLC), see page 286.

Mounting Options

A hook, cord and plug or pendant mount is available for remote mounting from optical assembly. Also works with JLC Remote Shade Assemblies (see page 286 for available wattages in JLC Remote Shade Assemblies)



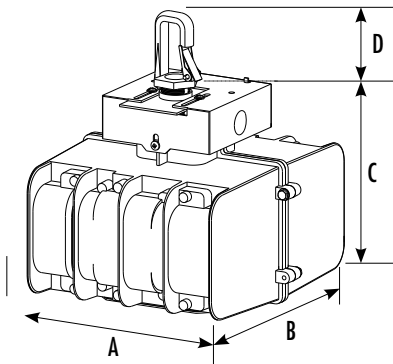
55 °C, 65 °C Ambient Rated
Recognized for Damp Locations
Contact Factory for CUL Availability

Metal Halide Distance	Gauge*
Up to 50 ft.	16
50 to 100 ft.	14
100 to 200 ft.	12
200 to 300 ft.	10

**Recommended wire gauge to remote lamp*

Dimensions

	A	B	C	D	Approx. Ship Wt.
Z M Series	8.5"	9.3"	7.5"	3"	15 lbs.
RJL Series	10.0"	13.2"	7.5"	3"	25 lbs.



For Remote Shade Assemblies, see page 286.



RSA Mogul
Socket Assembly
(To be used with
remote ballast)

Remote Ballast Enclosure Order Information

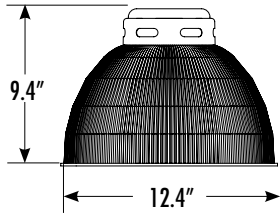
Lamp Type	Ordering Code	Watts	Volts	Max Btl Distance	Housing Size
Metal Halide					
	RJMM17M*(b)	175	MT	*	MED
	RJMM175*(b)	175	480	*	MED
	RJMM25M*(b)	250	MT	*	MED
	RJMM255*(b)	250	480	*	MED
	RJMM40M*(b)	400	MT	*	MED
	RJMM405*(b)	400	480	*	MED
	RJLM99M*(b)	1000	MT	*	LARGE
	RJLM995*(b)	1000	480	*	LARGE
Pulse Start Metal Halide					
	RJMP05M*(b)	50	MT	50'	MED
	RJMP07M*(b)	70	MT	50'	MED
	RJMP10M*(b)	100	MT	50'	MED
	RJMP15M*(b)	150	MT	50'	MED
	RJMP17M*(b)	175	MT	10'	MED
	RJMP20M*(b)	200	MT	10'	MED
	RJMP205*(b)	200	480	10'	MED
	RJMP25M*(b)	250	MT	10'	MED
	RJMP255*(b)	250	480	10'	MED
	RJMP32M*(b)	320	MT	15'	MED
	RJMP325*(b)	320	480	10'	MED
	RJMP35M*(b)	350	MT	15'	MED
	RJMP355*(b)	350	480	15'	MED
	RJMP40M*(b)	400	MT	15'	MED
	RJMP405*(b)	400	480	15'	MED
	RJMP45M*(b)	450	MT	15'	MED
	RJMP455*(b)	450	480	15'	MED
High Pressure Sodium					
	RJMS031*(b)	35	120	10'	MED
	RJMS051*(b)	50	120	10'	MED
	RJMS05M*(b)	50	MT	10'	MED
	RJMS071*(b)	70	120	10'	MED
	RJMS07M*(b)	70	MT	10'	MED
	RJMS101*(b)	100	120	10'	MED
	RJMS10M*(b)	100	MT	10'	MED
	RJMS151*(b)	150	120	10'	MED
	RJMS15M*(b)	150	MT	10'	MED
	RJMS25M*(b)	250	MT	25'	MED
	RJMS255*(b)	250	480	25'	MED
	RJMS40M*(b)	400	MT	25'	MED
	RJMS405*(b)	400	480	25'	MED
	RJLS99M*(b)	1000	MT	10'	LARGE
	RJLS995*(b)	1000	480	10'	LARGE

* See Voltage Below

Remote Ballast Enclosure Voltages, and Options

Voltages	Option (b) (Factory Installed)
1 = 120V 2 = 277V 3 = 208V 4 = 240V 5 = 480V M = Multi-Tap tapped @ 277V	<p><i>Fusing</i></p> <p>(x)F = Single - Specify voltage (x): 1 = 120V; 2 = 277V</p> <p>(x)J = Dual - Specify voltage (x): 3 = 208V; 4 = 240V; 5 = 480V</p> <p>P = Twist + Lock Plug (change M to desired voltage on Multi-Tap) Q = Quartz Standby HPF = High Power Factor (120V HPS reactor only) (x)(x) = Power/Lamp Cord (specify length in feet after options)</p>

RSA Acrylic Prismatic JLC-RSA

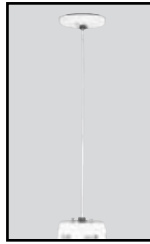


Recognized for Damp Locations
Contact Factory for CUL Availability

Mounting Options

Cord Pendant Mount

Ordering Code: **CP**



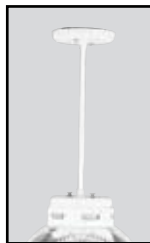
Spiral Cord Pendant Mount

Ordering Code: **CS**



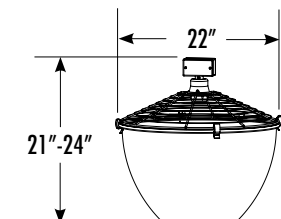
Rigid Pendant Mount

Ordering Code: **RP**



RSA-5-ND22W

The RSA-5-ND22W is supplied with a 22" diameter white reflector that attaches to the mounting wire guard with four stainless steel clips and a hinge. The wire guard is designed to prevent tennis balls from resting on top of fixture. The assembly has a 3/4" NPT thread on the junction box for mounting to a conduit or standard hook. The assembly is to be used with a mogul base HID lamp in the base up position. Do not use with BT-28 size lamps. The RSA5-5-ND22W must be used in conjunction with either the RJ or RC Series remote ballast.



JLC Shade Assemblies are for use with the RJ Series Remote Ballast J-Pod. See page 284.

JLC Shade Assemblies are mounted to junction box in ceiling.

RS Order Information

Shade Size	Shade Type	Catalog Number
12"	Acrylic Prismatic	JLC-(a)(b)0xx(c)

Source (a)	Mounting (b) (Factory Installed)	Pendant Mount Length	Options (c)
2 = Open Rated MH (Max 175W) 5 = HPS (Max 150W) 8 = Enclosed Rated MH/PS (Max 100W) 9 = Open Rated MH/PS (Max 150W)	CP = Cord Pendant Mount CS = Spiral Cord Pendant Mount C = Spiral Cord Pendant Mount RP = Rigid Pendant Mount SP = Swivel Pendant Mount	<u>Pendant Mount Lengths</u> 0(xx) = xx" (please order in increments of 6" up to 60") Examples: 018 = 18" 024 = 24"	<u>Lens</u> L = Flat Acrylic Lens (100W max) K = Conical Lens (100W max) D = Drop Lens (100W max) - = No Lens (Only for HPS, Open Rated MH & Open Rated MH/PS) Q = Quartz Standby (175W only) <u>Color (White is standard)</u> BK = Black

Indirect Lighting Order Information

Shade Size	Shade Type	Catalog Number
22"	Spun Aluminum Painted White Reflector	RSA-5-ND22W

Note: The RSA5-5-ND22W cannot be used with either the RJ or RC Series remote ballast. Shade is designed to prevent tennis balls from being trapped on fixture top.

Indirect Lighting Options

Options (a)

Q = Quartz Standby



RSA Indirect Lighting
RSA-5-ND22W

Remote Shade Assembly Order Information

Shade Size	Shade Type	Catalog Numbers		
		RSA3	RSA4	RSA5
14"	Spun Aluminum Reflector	RSA3(a)-(b)EB14	RSA4(a)-(b)EB14	
16"	Spun Aluminum Reflector	RSA3(a)-(b)EB16	RSA4(a)-(b)EB16	
22"	Spun Aluminum Reflector	RSA3(a)-(b)EB22	RSA4(a)-(b)EB22	RSA5(a)-(b)EB22
17"	Faceted Aluminum Reflector	RSA3(a)-(b)SDC17	RSA4(a)-(b)SDC17	
22"	Faceted Aluminum Reflector	RSA3(a)-(b)SDC22	RSA4(a)-(b)SDC22	RSA5(a)-(b)SDC22
16"	Acrylic Refractor	RSA3(a)-(b)816	RSA4(a)-(b)816	
22"	Acrylic Refractor	RSA3(a)-(b)822	RSA4(a)-(b)822	
25"	Acrylic Refractor	RSA3(a)-(b)825	RSA4(a)-(b)825	

Note: Mogul base only. Shade included. Lamp not included. Some lamps require bottom lens or open rated socket (V).

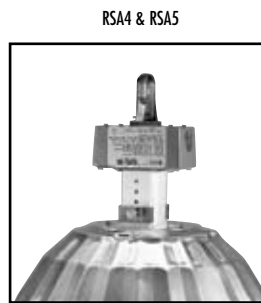
Options (a) (Factory Installed)	Options (b) (Factory Installed)
V = Open Rated Socket	XX = Lamp Cord (05 feet standard)
G = Totally Enclosed and Dust-Tight (Not Available in 14" Spun Aluminum or 16" Acrylic)	(specify extra length - feet for XX)
Q = Quartz Standby (Not Available with RSA3)	
NA = Non Adjustable	



RSA3



RSA3NA



RSA4 & RSA5

Low Bay Order Information

Shade Size	Shade Type	Catalog Numbers	
16"	Spun Aluminum Low Bay Reflector	RSA3	RSA4
		RSA3(a)-(b)LB16W	RSA4(a)-(b)LB16W
		RSA3(a)-(b)LB22W	RSA4(a)-(b)LB22W
30"	Spun Aluminum Low Bay Reflector	RSA3(a)-(b)LB30W	RSA4(a)-(b)LB30W

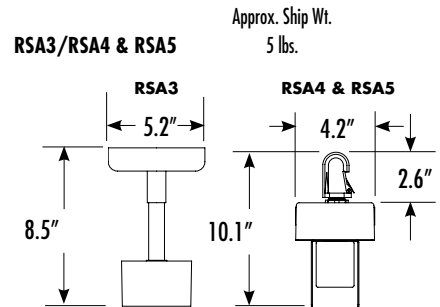
Note: Mogul base only. Shade included. Lamp not included.

Options (a) (Factory Installed)	Options (b) (Factory Installed)
G = Totally Enclosed and Dust-Tight	XX = Lamp Cord (05 feet standard)
	(specify extra length - feet for XX)



RSA-LB Series
Low Bay Shade
RSA-LB16W, RSA-LB22W &
RSA-LB30W

Dimensions



Approx. Ship Wt.
5 lbs.



RSA-EB Series
Spun Aluminum
Reflector
RSA-EB14, RSA-
EB16 & RSA-EB22

RSA-SDC Series
Faceted Aluminum
Reflector
RSA-SDC17 & RSA-
SDC22



RSA-Acrylic
Refractor
RSA-816, RSA-822
& RSA-825

Remote Shade Assembly

Available with eleven different reflector options. The RSA3 attaches to a standard ceiling mounted 4" octagon junction box. The RSA4 and RSA5 come standard with the reflector, junction box, mounting hook with safety spring clip and five feet of SOW 16/3 cord.

RSA3: 400W Max
RSA4: 450W Max
RSA5: 750 & 1000W

Optical

Adapts to all high bay and low bay reflector assemblies including all optical accessories.

Ballast

The remote magnetic extruded aluminum and magnetic cast aluminum housing are available.