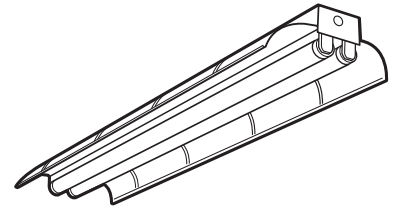


TECHNICAL SPECIFICATIONS

IE

All Purpose Industrial

CATALOG NUMBER _____
 TYPE _____
 DATE _____
 PREPARED BY _____
 PROJECT _____



HOUSING: Die-formed heavy gauge steel with high-gloss, baked white enamel finish over rust inhibiting phosphate coat. 7/8" knockouts for easy installation.

Reflector: Strong, rigid, die-embossed solid white reflector in 4' sections, standard. Optional "A" apertures for 12% uplight.

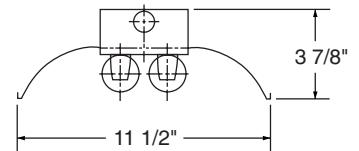
ELECTRICAL: Fully wired for UNV 120-277V, 50-60Hz operation with thermally protected, automatic resetting Class P, sound rated A ballast as standard unless otherwise specified. UL listed damp location.

MOUNTING: Ceiling surface mount (*HO and VHO units must be suspended at least 6" from ceiling for cooler operation and longer ballast life*), spacing available with Bracket (SN), CA24 in kit or stem mount individual or continuous row. AC aligner clips available for continuous runs.

IE Industrial Ordering Information

Series	# Lamps	Lamps	Reflector Options
IE	1	28 = 28W 48" T5	Solid is standard
	2	32 = 32W 48" T8	
	3	48 = 48" Slimline	A = Aperture 12% uplight
		96 = 96" Slimline	
	21 = Tandem, 2 lamps	High Output	
	22 = Tandem, 4 lamps	48 = 48" HO	
	23 = Tandem, 6 lamps	54 = 54W T5HO	
		96 = 96" HO (1 or 2 lamp only)	
		Very High Output	
		48 = 48" VHO (1 or 2 lamp only)	
	96 = 96" VHO (1 or 2 lamp only)		

Dimensions



Options	Ballast	Switching	Voltage
ELS1 = Emergency Lighting (low lumens)	B5 = Electronic T12 HOB5 = High Output Electronic T12	For 2 lamp units Blank = single ballast	UNV = 120-277V 120 = 120V 277 = 277V
ELS2 = Emergency Lighting (medium lumens)	B11 = Electronic T8 B11HP(x) = HPT8*	2/1L = (2) 1-lamp ballasts	
ELS3 = Emergency Lighting (high lumens)	HOB11 = High Output Electronic T8 B12 = Electronic T5 HO = High Output VHO = Very High Output	For 3 and 4 lamp units Blank = dual ballasts 3L = (1) 3-lamp ballast 4L = (1) 4-lamp ballast	
		For 6 lamp tandem units 2/3L = (2) 3-lamp ballasts 2L4L = (1) 2-lamp and (1) 4-lamp ballast	

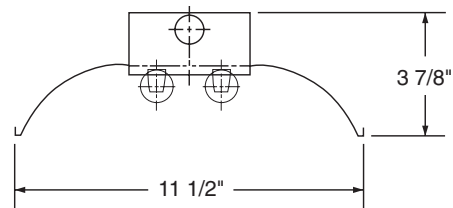
*CEE listed T8; specify (L)ow, (N)ormal, or (H)igh ballast factor. Contact factory for NEMA Premium.

Accessories

SN - Snapper Brackets
 CA24 - Chain Hanger Assembly (24" total drop)
 CS24 - "S" Hook (4) Chain Hanger Assembly (24" total drop)
 HKSC - Hook & Chain Assembly (24" total drop; 4' fixtures only)
 LG48 - 48" wire guard
 AC - Aligner Clip
 CHJ - Housing Joiner

IE All Purpose Industrial

Dimensions



**HO models
are 5" deep**

