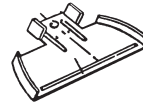


TECHNICAL SPECIFICATIONS

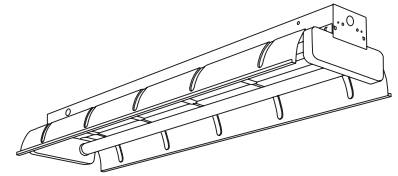
IF

Spec Grade Industrial

CATALOG NUMBER _____
 TYPE _____
 DATE _____
 PREPARED BY _____
 PROJECT _____



Optional reflective end, RE



HOUSING: Die-formed heavy gauge steel with high-gloss, baked white enamel finish over rust inhibiting phosphate coat. 7/8" knockouts for easy installation. Two-lamp model has 6" on-center lamp spacing.

REFLECTOR: Heavy gauge, rigid, die-embossed reflector with transverse beads, in 4' sections; high-gloss white reflector, or optional "A" apertures for 15% uplight. High reflectance specular aluminum insert (SR) available.

ELECTRICAL: Fully wired for UNV 120-277V, 50-60Hz operation with thermally protected, automatic resetting Class P, sound rated A ballast as standard (except Slimline and HO models) unless otherwise specified. UL listed damp location.

MOUNTING: Ceiling surface mount (HO and VHO units must be suspended at least 6" from ceiling for cooler operation and longer ballast life), spacing available with Snapper Bracket (SN), CA24 chain kit or stem mount individual or continuous row.

IF Premium Turret Industrial Ordering Information

Series	# Lamps	Lamps	Reflector Options
IF	2	28 = 28W 48" T5	A = Aperture, 15% uplight
	3	32 = 32W 48" T8	
	4	48 = 48" Slimline	
	22 = Tandem, 4 lamps	96 = 96" Slimline	
	23 = Tandem, 6 lamps	High Output	
	24 = Tandem, 8 lamps	48 = 48" HO	
		54 = 54W T5HO	
		96 = 96" HO	
		Very High Output	
		48 = 48" VHO	
	96 = 96" VHO		

Options	Ballast	Switching	Voltage
SR = Specular Reflector	B5 = Electronic T12	For 2 lamp units	UNV = 120-277V
ELS1 = Emergency Lighting (low lumens)	B11 = Electronic T8	Blank = single ballast	120 = 120V
ELS2 = Emergency Lighting (medium lumens)	B11HP(x) = HPT8*	2/1L = (2) 1-lamp ballasts	277 = 277V
ELS3 = Emergency Lighting (high lumens)	HOB11 = High Output Electronic T8		
	B12 = Electronic T5	For 3 and 4 lamp units	
	HO** = High Output	Blank = dual ballasts	
	VHO** = Very High Output	3L = (1) 3-lamp ballast	
		4L = (1) 4-lamp ballast	
		For 6 lamp tandem units	
		Blank = single ballast	
		2/3L = (2) 3-lamp ballasts	
		2L/4L = (1) 2-lamp and (1) 4-lamp ballast	

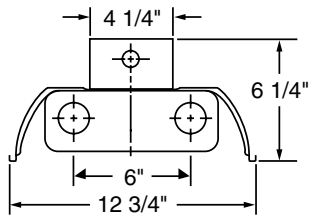
*CEE listed T8; specify (L)ow, (N)ormal, or (H)igh ballast factor. Contact factory for NEMA Premium.

** Must be spaced at least 6" from ceiling

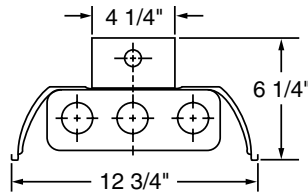
Options	Accessories
CORD AND PLUG	RE = Reflector end
CPT(x) (twist + lock)	WG = Wire Guards
1 = 120V	IF JOINER = For continuous run
2 = 277V	
CP3 = Cord & Plug - 120V Straight Blade 5-15P	

IF Premium Industrial Turret

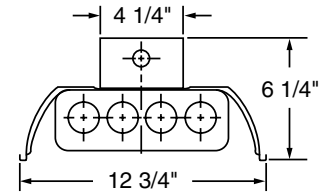
Dimensions



2 Lamp Model



3 Lamp Model



4 Lamp Model

