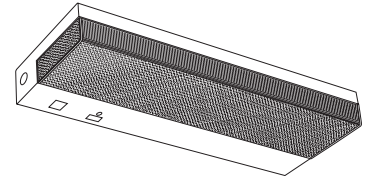


TECHNICAL SPECIFICATIONS

JBH, OW, KW All Purpose Task



CATALOG NUMBER _____
 TYPE _____
 DATE _____
 PREPARED BY _____
 PROJECT _____

HOUSING: Heavy gauge steel with baked white enamel over rust inhibiting phosphate coat, deburred, flush ends. Flattened KOs provided, top, back, and sides. Forward throw angled housing (JBH). JBUY has 1-5/8" upright cutouts for snap-in diffuser.

SHIELDING: Snap-in clear pattern 12 prismatic acrylic. Viewing edge is linear prism for enhanced side lighting (OW).

OPTIONS: 6' white 3 wire cord and plug, hardware/conduit connector, grounded convenience outlet, fast blow fuse, slow blow fuse, and rocker switch are available.

ELECTRICAL: Factory wired for 120V operation, thermally protected, Class P, sound rated A electronic ballast. UL listed.

MOUNTING: Individual or continuous rows. OW and JBH units are intended for surface wall mount, horizontal use.

KW, JBH And OW Task Lighting Ordering Information

Series	# Lamps	Lamp Type	Ballast	Voltage
OW = Prismatic Front and Side	1	17 = 17W 24" T8	B11 = Electronic T8	UNV** = 120-277V
OWU = OW with Uplight	2	20 = 20W 24" T12	B22 = LPF Electronic T8/T12	120 = 120V
JBH = Forward Throw		25 = 25W 36" T8	B11HP(x) = HPT8*	
JBUY = Forward Throw with Uplight Diffuser		30 = 30W 36" T12		
KW = (1 lamp only) Solid front		32 = 32W 48" T8		
		40 = 34/40W 48" T12		

*CEE listed T8; specify (L)ow, (N)ormal, or (H)igh ballast factor. Contact factory for NEMA Premium.

**UNV only when unit is less outlet and turn switch

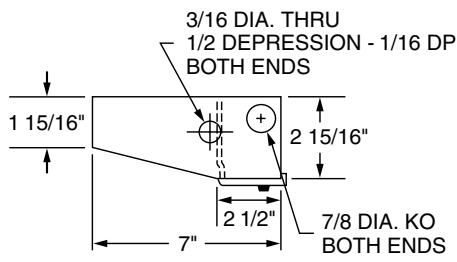
Options

C = 120V 6' white 3-wire cord and plug
 CO = Grounded convenience outlet
 SB = Slow Blow Fuse
 FB = Fast Blow Fuse
 RSW = 120V Rocker switch
 SW = 120V Turn Switch

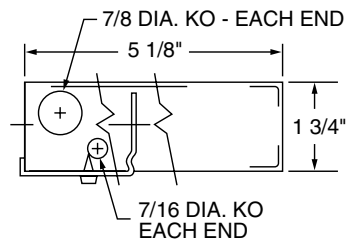
Options only available on 120V units

JBH, OW, KW All Purpose Task

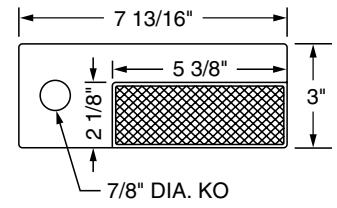
Dimensions



JBH



KW



OW

