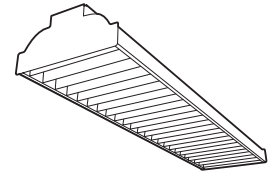


**Latitude
LAW / LAM
Louvered Industrial**



CATALOG NUMBER _____
 TYPE _____
 DATE _____
 PREPARED BY _____
 PROJECT _____

HOUSING: Die-Formed heavy gauge steel with high gloss baked white enamel finish over rust inhibiting phosphate coat. 7/8" knockouts for easy installation.

REFLECTORS: LAW Reflector: Strong, rigid, die-embossed solid white painted steel "S" reflector in 4' sections is standard. Optional "A" reflector available with uplight. LAM Reflector: Strong, rigid, die-embossed solid MIRO™ 4 specular aluminum "S" reflector in 4' sections is standard. Optional "A" reflector available with 12% up-light.

LOUVERS: D: Die-formed, parabolic "Lift and Shift" louver made of diffuse surface aluminum. W: Die-formed, parabolic "Lift and Shift" louver made of white painted aluminum.

ELECTRICAL: Fully wired for 120/277V, 60 Hz AC operation with an ETL-CBM thermally protected, automatically resetting class "P" electronic ballast. Optional ballasts and configurations are available upon request.

MOUNTING: Ceiling surface or suspended mounting options are available for individual units or continuous rows. Alignment clips available for continuous rows. White end caps included. Contact factory for continuous row applications.

Latitude Series Ordering Information

Series	Size	Uplighting	Louver	# Lamps	Lamp Type
LAW = Latitude White	4 = 4'	A = Aperture	S = Semi Specular parabolic	1	28T5 = F28 T5
LAM = Latitude with MIRO 4 reflector	8 = 8'	S = Solid (none)	W = White painted parabolic	2	32T8 = F32 T8
			Note: 1 per 4' Section	3	54T5H = F54 T5 HO
				2T = 2 lamps, Tandem	
				4T = 4 lamps, Tandem	
				6T = 6 lamps, Tandem	

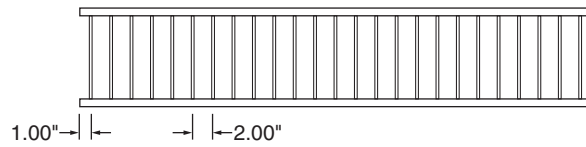
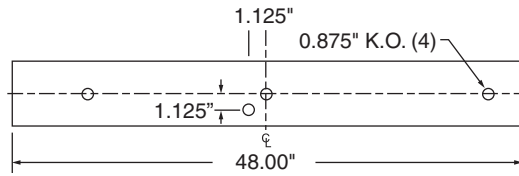
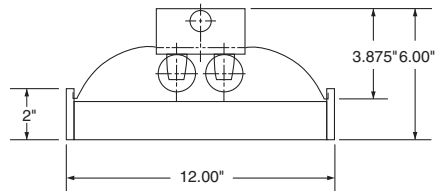
Emergency Lighting	Ballast	Switching	Voltage
ELS1 = Emergency Lighting (low lumens)	E = Electronic	For 2 lamp units	U1 = 120-277
ELS2 = Emergency Lighting (medium lumens)	E(x) = Electronic HPT8*	Blank = single ballast	U3 = 347-480V
ELS3 = Emergency Lighting (high lumens)	PS = Program Start (recommended for use with occupancy sensors; standard on T5)	2/1L = (2) 1-lamp ballasts	347 = 347V
		For 3 and 4 lamp units	480 = 480V
		Blank = dual ballasts	
		3L = (1) 3-lamp ballast	
		4L = (1) 4-lamp ballast	
		For 6 lamp tandem units	
		2/3L = (2) 3-lamp ballasts	
		2L4L = (1) 2-lamp and (1) 4-lamp ballast	

*CEE listed HPT8 (32W only); specify (L)ow, (N)ormal, or (H)igh ballast factor

Options*	Accessories
Plug-in Systems	ECW = End caps (white, set of 2)
Ballast wired to Black:	ECS = End caps (silver, set of 2)
PL1 BK - one circuit, two wires	WO = Without endcaps
PL2 BK - two circuits, three wires	AC = Alignment clips
PL3 BK - three circuits, four wires	FB = Fast blow fuse
Ballast wired to Red:	SB = Slow blow fuse
PL2 RD - two circuits, three wires	BP = Bulk pack
PL3 RD - three circuits, four wires	
Ballast wired to Blue:	CA24 = Chain hanger assembly - (2) 18" chains, (2) "V" hooks, (2) "S" hooks for total drop 24"
PL3 BL - three circuits, four wires	CS24 = S-hook chain hanger assembly - (2) 18" chains, (2) "V" hooks, (2) "S" hooks for total drop 24"
	PM(x) = Twin pendant mount - 2 white stems - specify length (24", 36", 48", 60", 72")
	HKSC = Hook & chain assembly - monopoint mount to four point suspension. (Includes hook, chain, and mounting plate)
Cord and Plug Options	CAB(x)72 = Adjustable cables - includes 6-foot steel aircraft cables, toolless adjusters and mounting hardware. Specify "2" for 2 cables & Y-hanger or "4" for 4 cables.
CPT(x) = "x" = voltage	CACC(xx) = Cable Kit, includes 2 cables, mounting hardware, white power cord and canopies; specify length in inches (48 or 72)
12 = 120V L5-15P	
20 = 208V	
24 = 240V	
27 = 277V L7-15P	
34 = 347V	
48 = 480V	
CP3 = Cord & Plug - 120V Straight Blade 5-15P	

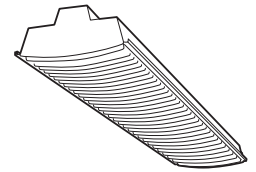
Latitude Louvered Industrial

Dimensions



NOT TO SCALE

**Latitude Contour
LAC
Louvered Industrial**



CATALOG NUMBER _____
 TYPE _____
 DATE _____
 PREPARED BY _____
 PROJECT _____

HOUSING: Die-formed heavy gauge steel with high gloss post-painted baked white enamel finish over rust inhibiting phosphate coat. 7/8" knockouts for easy installation.
REFLECTORS: Strong, rigid, die-embossed solid white post-painted steel "S" reflector in 4' or 8' sections is standard. Optional "A" reflector available with 12% up-light.
LOUVER: Die-formed, curved blade louver made of white painted steel with die-formed latches for easy opening and re-lamping. Louvers provided in 4' sections.
ELECTRICAL: Fully wired for 120-277V, 50-60Hz operation with an thermally protected, automatic resetting class "P" electronic ballast. Other ballasts and configurations are available upon request.
MOUNTING: Ceiling surface or suspended mounting options are available for individual units or continuous rows.

Latitude Contour Ordering Information

Series	Size	Uplighting	# Lamps	Lamp Type
LAC	4 = 4'	A = Aperture	1 = 1 lamp	28T5 = F28 T5
		S = Solid (none)	2 = 2 lamps	32T8 = F32 T8
	8 = 8'		3 = 3 lamps	54T5H = F54 T5 HO
			4 = 4 lamps	
			2T = 2 lamps, Tandem	
			4T = 4 lamps, Tandem	
			6T = 6 lamps, Tandem	
			8T = 8 lamps, Tandem	

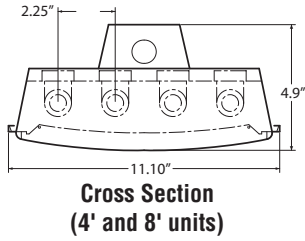
Emergency Lighting	Ballast	Switching	Voltage
ELS1 = Emergency Lighting (low lumens)	E = Electronic	For 2 lamp units	U1 = 120-277
ELS2 = Emergency Lighting (medium lumens)	E(x) = Electronic HPT8*	Blank = single ballast	U3 = 347-480V
ELS3 = Emergency Lighting (high lumens)	PS = Program Start (recommended for use with occupancy sensors; standard on T5)	2/1L = (2) 1-lamp ballasts	347 = 347V
		For 3 and 4 lamp units	480 = 480V
		Blank = dual ballasts	
		3L = (1) 3-lamp ballast	
		4L = (1) 4-lamp ballast	
		For 6 lamp tandem units	
		2/3L = (2) 3-lamp ballasts	
		2L4L = (1) 2-lamp and (1) 4-lamp ballast	

*CEE listed HPT8 (32W only); specify (L)ow, (N)ormal, or (H)igh ballast factor

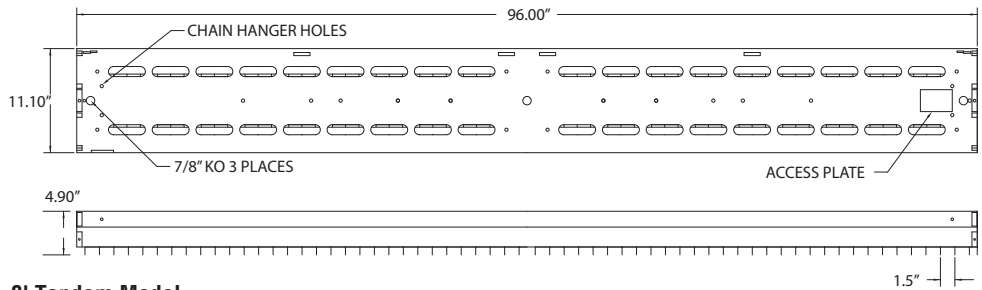
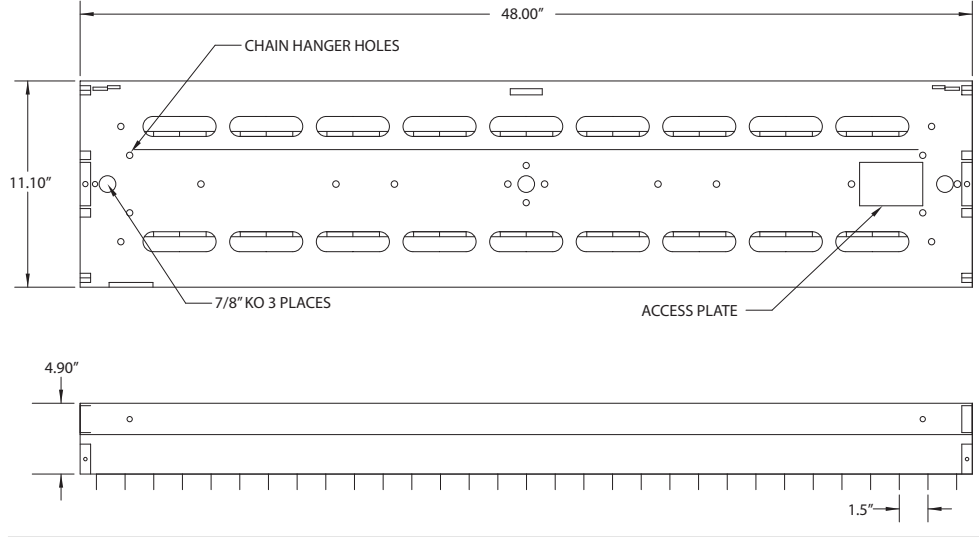
Options*	Accessories
Plug-in Systems	FB = Fast blow fuse
Ballast wired to Black:	SB = Slow blow fuse
PL1 BK - one circuit, two wires	BP = Bulk pack
PL2 BK - two circuits, three wires	
PL3 BK - three circuits, four wires	CA24 = Chain hanger assembly - (2) 18" chains, (2) "V" hooks, (2) "S" hooks for total drop 24"
Ballast wired to Red:	CS24 = S-hook chain hanger assembly - (2) 18" chains, (2) "V" hooks, (2) "S" hooks for total drop 24"
PL2 RD - two circuits, three wires	PM(x) = Twin pendant mount - 2 white stems - specify length (24", 36", 48", 60", 72")
PL3 RD - three circuits, four wires	HKSC = Hook & chain assembly - monopoint mount to four point suspension. (Includes hook, chain, and mounting plate)
Ballast wired to Blue:	CAB(x)72 = Adjustable cables - includes 6-foot steel aircraft cables, toolless adjusters and mounting hardware. Specify "2" for 2 cables & Y-hanger or "4" for 4 cables.
PL3 BL - three circuits, four wires	CACC(xx) = Cable Kit, includes 2 cables, mounting hardware, white power cord and canopies; specify length in inches (48 or 72)
Cord and Plug Options	ENTS = Tamperproof screws
CPT(x) = Twist and lock, "x" = voltage	ENTSD = Tamperproof screwdriver
12 = 120V L5-15P	
20 = 208V	
24 = 240V	
27 = 277V L7-15P	
34 = 347V	
48 = 480V	
CP3 = Cord & Plug - 120V Straight Blade 5-15P	

Latitude Contour Louvered Industrial

Dimensions



4' Model



8' Tandem Model