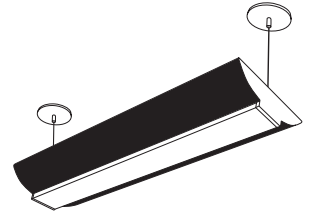


TECHNICAL SPECIFICATIONS

CATALOG NUMBER _____
 TYPE _____
 DATE _____
 PREPARED BY _____
 PROJECT _____

LDI
Direct/Indirect



HOUSING: One-piece steel housing with high-gloss, baked white enamel finish over rust inhibiting phosphate coat. Continuous row end plates designed for easy linear mounting.

REFLECTOR: Perforated housing with translucent milk white acrylic overlay allows ambient light distribution. Individually mounted units supplied with formed plastic end plates that will not fade or discolor.

ELECTRICAL: Fully wired for UNV 120-277V, 50-60Hz operation with thermally protected, automatic resetting Class P, sound rated A electronic ballast as standard unless otherwise specified. UL listed.

MOUNTING: Individual or continuous row pendant mount with aircraft cable or stem/canopies. Continuous row fixtures include joiner plate to eliminate light leak, order LDJIP and LDIEC separately. Row units available in 4' and 8' increments only.

LDI Series Ordering Information

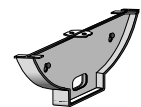
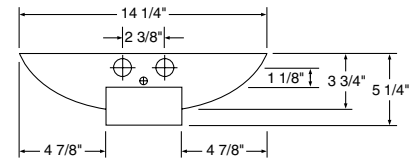
| Series | Lamps | Options |
|--|---------------------------------------|--|
| LDI | 232 = (2) 32W 48" T8 | ELS1 = Emergency Lighting (low lumens) |
| LDII = individual with 2 end caps | 254 = (2) 54W 48" T5HO | ELS2 = Emergency Lighting (medium lumens) |
| | 2232 = (4) Tandem 32W 48" T8 | ELS3 = Emergency Lighting (high lumens) |
| | 2254 = (4) Tandem 54W 48" T5HO | |

| Ballast | Voltage | Accessories |
|----------------------------|-----------------------|---|
| B11 = Electronic T8 | UNV = 120-277V | LDJIP = Linear Direct/Indirect Joiner Plate, order one less than number of fixtures. |
| B11HP(x) = HPT8* | | LDIEC = Linear Direct/Indirect End Cap, order 1 pair for each row. |
| B12 = Electronic T5 | | LDIPM(x)** = Pendant Mount Kit, includes 2 white stems, mounting brackets and canopies - specify length in inches (24, 36, 48, 60, 72) |
| | | CACC(xx)** = Cable Kit, includes 2 cables, mounting hardware, white power cord and canopies; specify length in inches (48 or 72) |

*CEE listed T8; specify (L)ow, (N)ormal, or (H)igh ballast factor. Contact factory for NEMA Premium.

**Requires 1 Pendant Mount or Cable Kit per 4' or 8' tandem unit

Dimensions



Linear Row Mounting

