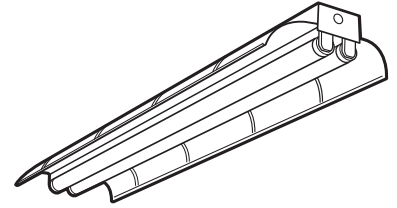


TECHNICAL SPECIFICATIONS

MIRO Premium Specular Industrial



CATALOG NUMBER _____
 TYPE _____
 DATE _____
 PREPARED BY _____
 PROJECT _____

HOUSING: Die-formed heavy gauge steel with high-gloss, baked white enamel finish over rust inhibiting phosphate coat. 7/8" knockouts for easy installation.

REFLECTOR: Specular reflector manufactured from MIRO 4 aluminum in 4' sections to maximize light output and control beam spread. 95% reflectance.

ELECTRICAL: Fully wired for UNV 120-277V, 50-60Hz operation with thermally protected, automatic resetting Class P, sound rated A ballast as standard unless otherwise specified. UL listed damp location.

MOUNTING: Ceiling surface mount (*HO and VHO units must be suspended at least 6" from ceiling for cooler operation and longer ballast life*), spacing available with Snapper Bracket (SN), CA24 chain kit or stem mount individual or continuous row. AC aligner clips available for continuous runs.

MIE Premium Specular Industrial Ordering Information

Series	# Lamps	Lamps	Reflector Options	Options
MIE	1	28 = 28W 48" T5	<i>Solid is standard</i>	ELS1 = Emergency Lighting (low lumens)
	2	32 = 32W 48" T8	A = Aperture 12% uplight	ELS2 = Emergency Lighting (medium lumens)
	3	48 = 48" Slimline		
		96 = 96" Slimline		ELS3 = Emergency Lighting (high lumens)
		21 = Tandem, 2 lamps	<i>High Output</i>	
		22 = Tandem, 4 lamps	48 = 48" HO	
		23 = Tandem, 6 lamps	54 = 54W T5HO	
			96 = 96" HO	
			<i>Very High Output</i>	
			48 = 48" VHO	
		96 = 96" VHO		

Ballast	Switching	Voltage
HOB5 = High Output Electronic T12	<i>For 2 lamp units</i>	UNV = 120-277V
B11 = Electronic T8	<i>Blank = single ballast</i>	120 = 120V
B11HP(x) = HPT8*	2/1L = (2) 1-lamp ballasts	277 = 277V
HOB11 = High Output Electronic T8		
B12 = Electronic T5	<i>For 3 and 4 lamp units</i>	
HO = High Output	<i>Blank = dual ballasts</i>	
VHO = Very High Output	3L = (1) 3-lamp ballast	
	4L = (1) 4-lamp ballast	
	<i>For 6 lamp tandem units</i>	
	2/3L = (2) 3-lamp ballasts	
	2L4L = (1) 2-lamp and (1) 4-lamp ballast	

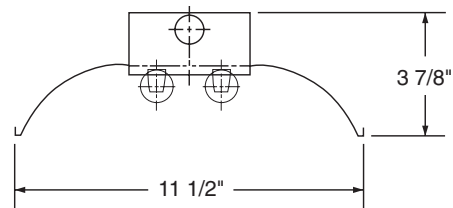
*CEE listed T8; specify (L)ow, (N)ormal, or (H)igh ballast factor. Contact factory for NEMA Premium.

Accessories

SN - Snapper Brackets
 CA24 = Chain Hanger Assembly - (2) 18" chains, (2) "V" hooks, (2) "S" hooks for total drop 24"
 CS24 = S-hook Chain Hanger Assembly - (2) 18" chains, (2) "V" hooks, (2) "S" hooks for total drop 24"
 HKSC - Hook & Chain Assembly (24" total drop; 4' fixtures only)
 LG48 - 48" wire guard
 AC - Aligner Clip / Joiner
 CHJ - Connector Joiner

MIRO Premium Specular Industrial

Dimensions



**HO models
are 5" deep**

