

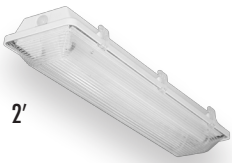
# PARKING GUARD

Parking garages have their own unique set of issues. They can be damp, dark, and dangerous.

Lighting not only has to be rugged and reliable but also be able to offer certain features that make effectively navigating and parking possible.

Simkar has developed the **Parking Guard** series of fixtures to solve these issues.

Combined with our offering of Exit/Emergency products and exterior lighting, Simkar offers a complete solution for your project site.



2'



4'



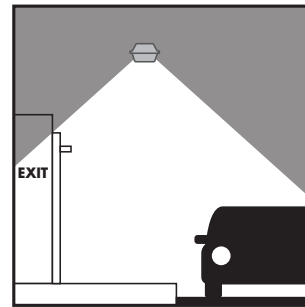
8' Tandem

## PGS Standard Parking Guard

The Standard Parking Guard (PGS) unit is the perfect choice for general illumination of driving, pedestrian, and access areas in parking structures.

PGS fixtures are available in 2', 4', and 8' versions and up to 6 lamps in the 8' model. Fixture performance is optimized by an 84% reflective silver reflector as standard. A 95% reflective Miro 4 reflector is also available.

Lamp options include 2' and 4' T5 and T5HO, as well as 2', 4' and 8' T8.



PGS

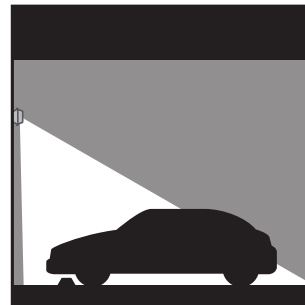
## PGA Asymmetric Distribution Parking Guard

The Asymmetric distribution Parking Guard (PGA) solves the glare issue found when trying to navigate ramps and driving lanes. The reflector is specially designed to push light in one direction while shielding the other. The PGA is also a good solution for areas that may require a wall-washer or to project light from sides into the center.

PGW fixtures are available in 2', 4', and 8' versions with up to 2 lamps in the 8' model.

Silver reflectors are standard with Miro 4 as an option.

Lamp options include 2' and 4' T5 and T5HO as well as 2', 4', and 8' T8.



PGA

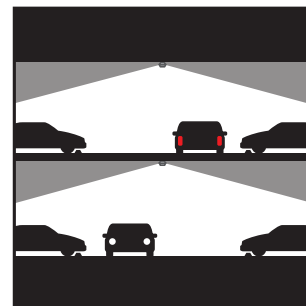
## PGW Wide Distribution Parking Guard

The Wide distribution Parking Guard (PGW) unit has been specifically designed to be mounted in the center of a parking lane and projecting light to the sides to illuminate parking spaces and clearly illuminate objects or individuals that may be in or between parking spaces.

PGW fixtures are available in 2', 4', and 8' versions with up to 4 lamps in the 8' model.

Silver reflectors are standard with Miro 4 as an option.

Lamp options include 2' and 4' T5 and T5HO as well as 2', 4' and 8' T8's.



PGW

## Parking Guard Ordering Information

Series	Distribution	Size	Lens	Reflector	# Lamps	Lamp Type
PG	S = Standard	2 = 2'	2' size	SR = Silver Aluminum Reflector	PGS	T5
	W = Wide	4 = 4'	RP = Ribbed Polycarbonate vacuum formed lens	M4 = Miro 4	1	14T5 = 14 watt T5, 2' unit
	A = Assymetric	8 = 8'	4' size		2	24T5H = 24 watt T5H0, 2' unit
			RP = Ribbed Polycarbonate injection molded lens		3	28T5 = 28 watt T5, 4' unit or 8' Tandem
			RA = Ribbed acrylic injection molded lens. 100%High impact acrylic		2T = 2 lamps Tandem (8' fixtures)	54T5H = 54 watt T5H04' unit or 8' Tandem not available with 3 lamps or 6T Tandem)
			8' size		4T = 4 lamps Tandem (8' fixtures)	
			RA = Ribbed acrylic injection molded lens. 100%High impact acrylic		6T = 6 lamps Tandem (8' fixtures)	
					PGW	T8
					2	17T8 = 17 watt T8, 2' unit
					4T = 4 lamps Tandem (8' fixtures)	32T8 = 32 watt T8, 4' unit or 8' Tandem
					PGA	32HP8 = 32 watt HPT8, 4' unit or 8' Tandem
					1	86T8H = 86 watt T8H0, F96, 8'unit (not available with 3 lamps)
					2T = 2 lamps Tandem (8' fixtures)	

Ballast	Switching	Voltage	Options	Accessories
E = Electronic E(x)* = Electronic HPT8* D = Dimming** DH = Daylight Harvesting (T8 only)** *Specify (L)Low, (N)Normal, or (High)	For 2 lamp units Blank = single ballast 2/1L = (2) 1-lamp ballasts For 3 lamp units Blank = (1) 3-lamp ballast 1L/2L = (1) 1-lamp ballast and (1) 2 lamp ballast For 4 lamp units Blank = (2) 2-lamp ballasts 4L = (1) 4-lamp ballast For 6 lamp Tandem units 2/3L = (2) 3-lamp ballasts 2L/4L = (1) 2-lamp ballast and (1) 4-lamp ballast	U1 = 120V - 277V U3 = 347V - 480V 347 = 347V 480 = 480V	BP = Bulk Pack ELS1 = Emergency Lighting (low lumens) ELS2 = Emergency Lighting (medium lumens) ELS3 = Emergency Lighting (high lumens) Note: PGS fixtures require "damp location" emergency ballasts COH = 3/4" Conduit Hub Installed. (2 required on 8' unit)** SSL = Stainless Steel Latches OS(x) = Individual Fixture PIR Occupancy Sensor; (specify number of lamps controlled: 1, 2, 3, 4, 5, or 6)** CP3 = Cord & Plug - 120V straight blade with 6' cord.** CPT(xx) = Cord and plug Twist-Lock with 6' cord; (Specify Voltage: 12 = 120V, 20 = 208V, 24 = 240V, 27 = 277V, 34 = 347V, or 48 = 480V)**  FB = Lay-in Fast Blow Fusing SB = Lay-in Slow Blow Fusing Lamps Installed (specify)	ENTS = Tamperproof Screws ENTSD = Screw Driver for Tamperproof Screws EN2MB = 2 Stainless Steel Mounting Brackets EN2SMB = 2 Swivel Mounting Brackets** WLH = 1 Wet Location Conduit Hub for 1/2"  Pendant mounting systems available. Please contact Simkar to discuss your application needs and product availability.

## Fluorescent vs. Pulse Start Metal Halide

\*\* Damp Location

HID												
Watts	50		70		100		150		250			
Approximate Mean Lumens	2100		3500		6200		10500		17000			
Equivalent Fluorescent												
T8												
Lamps per fixture	2	1	3	1	2	2	1	4	2	6	3	
Watts per Lamp	17	32	17	32	32	32	59	32	59	32	59	
Approximate Total Mean Lumens	2500	2800	3800	2800	5600	5600	5650	11200	11300	16800	16950	
Fixture Watts	34	32	51	32	64	64	59	128	118	192	177	
Watts Saved/fixture vs Pulse Start MH	16	18	19	38	8	36	41	22	32	58	73	
T5												
Lamps per fixture	2	1	3	1		2		4		6		
Watts per Lamp	14	28	14	28		28		28		28		
Approximate Total Mean Lumens	2300	2660	3450	2660		5320		10640		15960		
Fixture Watts	28	28	42	28		56		112		168		
Watts Saved/fixture vs Pulse Start MH	22	22	28	42		44		38		82		
T5H0												
Lamps per fixture	1		2	1		3	1	2		3		
Watts per Lamp	24		24	54		24	54	54		54		
Approximate Total Mean Lumens	1840		3680	4600		5520	4600	9200		13800		
Fixture Watts	24		48	54		72	54	108		162		
Watts Saved/fixture vs Pulse Start MH	26		22	16		28	46	42		82		