



Slimline and High Output Channels are ideal for maximum illumination. Available in 4', 6', and 8' individual lengths as well as continuous row mounting.

Housing

High-gloss, baked white enamel finish on steel housing with removable wireway access panel. Fixture is shipped fully wired and assembled. CHX models have flip-up socket bars and turn fastener for attaching wireway cover.

Electrical

Fully wired for 120V, 60Hz operation with thermally protected, automatic resetting, Class P, high-power-factor ballast, unless otherwise specified. Sound rated A electronic ballast, except slimline and high-output models. UL listed, damp location.

Mounting

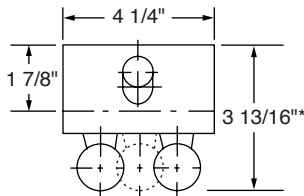
Combination end plate/joiner connects units for continuous row or wire through. Surface or pendant mount, high output model must be suspended at least 6" from ceiling for cooler operation.

- Flip-up sockets save installation time.
- Fully wired and assembled.
- Combination end plate/joiner easily connect units for continuous row or wire through.
- Die-formed heavy gauge, steel housing.
- Surface or pendant mount; individual, tandem or continuous rows.
- U.L. listed, damp location.



Flip up sockets

Dimensions



*HO and VHO are 4 5/8" deep

CHX Slimline And High Output Channel Ordering Information

Series	# Lamps	Lamps	Ballast	Voltage
CHX	1	48 = 48"	B5 = Electronic T12	UNV = 120-277V 120 = 120V 277 = 277V
	2	72 = 72"	HOB5 = High Output Electronic T12	
		96 = 96"	B11 = Electronic T8 HOB11 = High Output Electronic T8 HO = High Output	