

CATALOG NUMBER _____
 TYPE _____
 DATE _____
 PREPARED BY _____
 PROJECT _____

HOUSING: High-gloss, baked white enamel finish on steel housing with removable wireway access panel. Fixture is shipped fully wired and assembled. Flip-up socket bars and turn fastener for attaching wireway cover.

OPTIONS: Options include modular wiring, plug-in systems and wire guards.

ELECTRICAL: Fully wired for 120V, 60Hz operation with thermally protected, automatic resetting, Class P, high-power-factor ballast, unless otherwise specified. UL listed, damp location.

MOUNTING: Combination end plate/joiner connects units for continuous row or wire through. Heavy duty joiner plate available. Surface or pendant mount, high output model must be suspended at least 6" from ceiling for cooler operation.

CHX Slimline And High Output Channel Ordering Information

Series	# Lamps	Lamp Length (nominal)	ELS Options
CHX	1	48 = 48"	ELS1 = Emergency Lighting (low lumens)
	2	72 = 72"	ELS2 = Emergency Lighting (medium lumens)
	3	96 = 96"	ELS3 = Emergency Lighting (high lumens)
	4		
	21 = Tandem, Two Lamps		

Ballast	Voltage
B5 = Electronic T12	UNV = 120-277V
HOB5 = High Output Electronic T12	120 = 120V
B11 = Electronic T8	277 = 277V
HOB11 = High Output Electronic T8	
HO* = High Output T12	
VHO* = Very High Output T12	

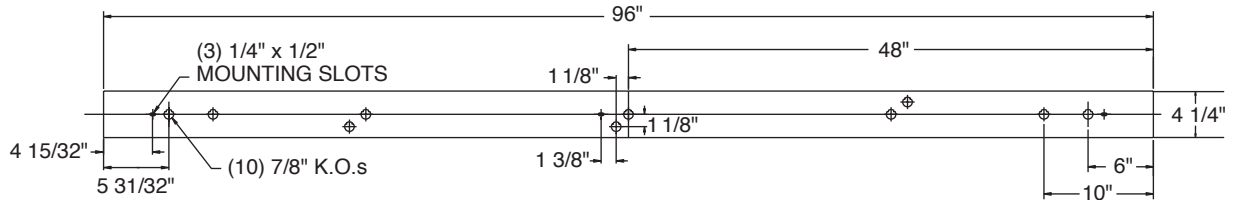
*Must be mounted at least 6" from surface

Options	Accessories
Cord and Plug	Reflectors*
CPT(x)	(x) Enter (W) for white or (S) for specular aluminum
1 = 120V	<i>Symmetric</i>
2 = 277V	SR(x)30 = 36" (Order 2 for 72" units)
CP3 = Cord & Plug - 120V Straight	SR(x)40 = 48" (Order 2 for 96" units)
Blade 5-15P	<i>Asymmetric</i>
Plug-in Connectors	AR(x)30 = 36" (Order 2 for 72" units)
<i>Ballast wired to Black:</i>	AR(x)40 = 48" (Order 2 for 96" units)
PL1 - one circuit, two wires	AC = Alignment Clips
PL2 BK - two circuits, three wires	CA24 = Chain Hanger Assembly - (2) 18" chains, (2) "V" hooks, (2) "S" hooks for total drop 24"
<i>Ballast wired to Red:</i>	CS24 = "S" Hook (4) Chain Hanger Assembly (24" total drop)
PL2 RD - two circuits, three wires	PM(x) = Pendant Mount, white stem - specify length in inches (24, 36, 48, 60, 72)
FB = Fast blow fuse	C = Single white canopy (for use with pendant mount)
SB = Slow blow fuse	CHJ = Housing Joiner
	SN = Snapper Brackets
	WG230 = 36" (Order 2 for 72" units)
	WG240 = 48" (Order 2 for 96" units)

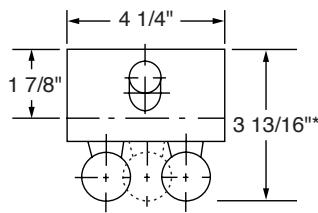
*Not compatible with wire guards

CH Slimline/High Output Striplite

Dimensions

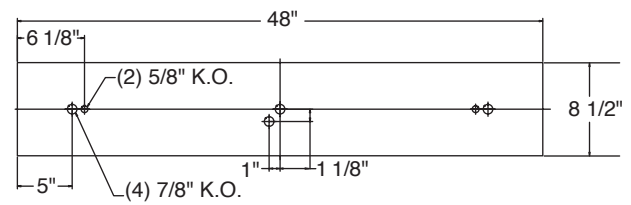


96" BACK PLAN (1LT AND 2LT)

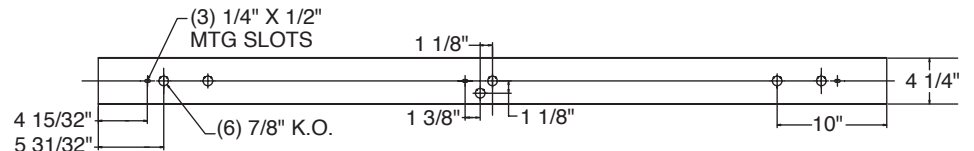


CHX / Slimline

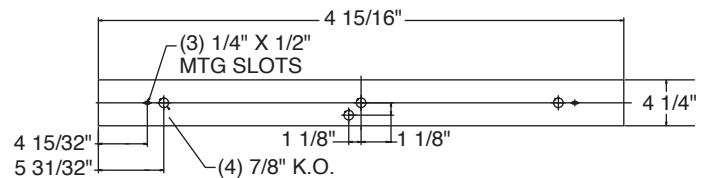
HO and VHO are 4 5/8" deep overall, housing alone is 2 3/4" deep, width is 4 1/4"



48" BACK PLAN (3LT AND 4LT)



72" BACK PLAN (1LT AND 2LT)



48" BACK PLAN (1LT AND 2LT)