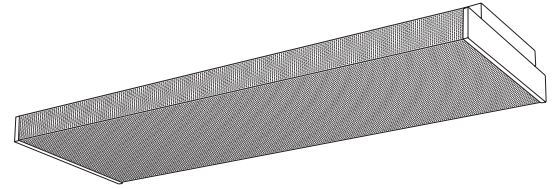


# TECHNICAL SPECIFICATIONS

## SN990

### Glare Reducing Wraparound



CATALOG NUMBER \_\_\_\_\_  
 TYPE \_\_\_\_\_  
 DATE \_\_\_\_\_  
 PREPARED BY \_\_\_\_\_  
 PROJECT \_\_\_\_\_

**HOUSING:** Die-formed heavy gauge steel with high-gloss, baked white enamel finish over rust inhibiting phosphate coat. Knockouts provided.

**SHIELDING:** Injection molded acrylic patterned prismatic for low surface glare is standard. Enhanced optics lens (SO990) also available.

**ELECTRICAL:** Fully wired for UNV 120-277V, 50-60Hz operation with thermally protected, automatic resetting Class P, sound rated A ballast as standard unless otherwise specified. UL listed.

**MOUNTING:** Individual stem or surface mount.

## SN990 Ordering Information

Series	# Lamps	Lamp Type	Options
<b>SN990</b> = Standard Lens 2L is 10 5/8" wide 3 and 4L are 15 5/8" wide	<b>2</b> <b>3</b> <b>4</b>	<b>32</b> = 32W 48" T8	<b>ELS1</b> = Emergency Lighting (low lumens) <b>ELS2</b> = Emergency Lighting (medium lumens) <b>ELS3</b> = Emergency Lighting (high lumens)
<b>SO990*</b> = Holophane® Lens 2L is 8 5/8" wide 3 and 4L are 13 1/2" wide	<b>22</b> = Tandem, 4 lamps		

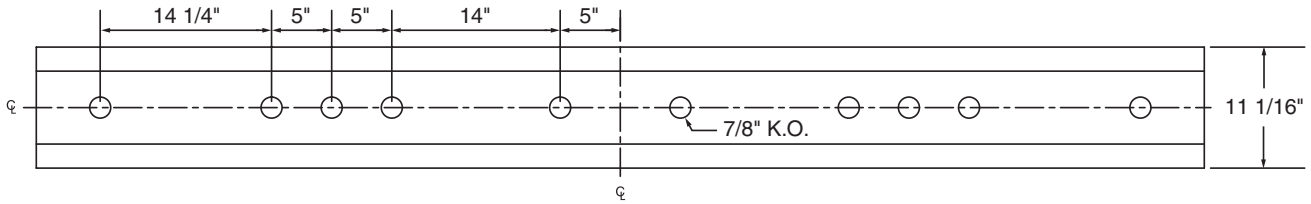
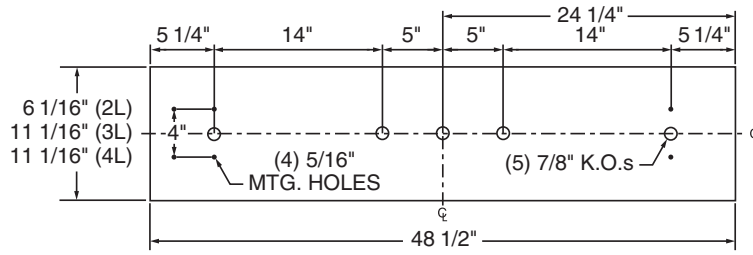
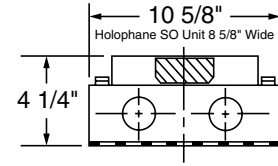
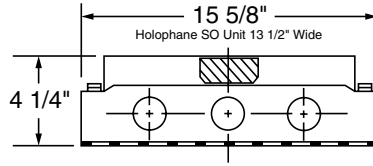
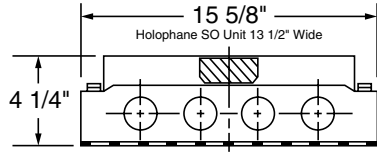
\*Consult factory for availability

Ballast	Voltage	Accessories
<b>B11</b> = Electronic T8 <b>B11HP(x)</b> = HPT8*	<b>UNV</b> = 120-277V <b>120</b> = 120V <b>277</b> = 277V	<b>PM(x)</b> = Pendant Mount, white stem - specify length in inches ( <b>24, 36, 48, 60, 72</b> ) <b>C</b> = Single White Canopy

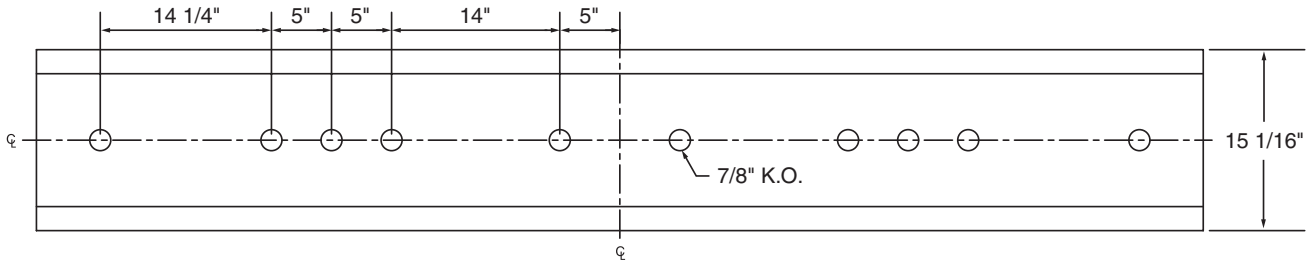
\*CEE listed T8; specify (L)ow, (N)ormal, or (H)igh ballast factor. Contact factory for NEMA Premium.

# SN990 Glare Reducing Wraparound

## Dimensions



Tandem 2232 and 2240 Models



Tandem 2332, 2432 and 2440 Models