

STC Staggered Striplites are ideal for custom lighting in retail stores and commercial environments. Striplites are available in 2', 3', 4', and 8' Tandem as well as continuous row mounting.



Housing

Die-formed heavy gauge steel with high-gloss, baked white enamel finish over rust inhibiting phosphate coat with removable wireway access panel. Fixture is shipped fully wired. Secure wireway cover with screw. KOs provided.

Options

Optional plug-in wiring system described in detail on page 92.

Electrical

Fully wired for UNV 120-277V, 50-60Hz operation with thermally protected, automatic resetting Class P, sound rated A ballast as standard unless otherwise specified. UL listed damp location.

Mounting

Individual or continuous row. STC features staggered ends to eliminate shadows at overlap.

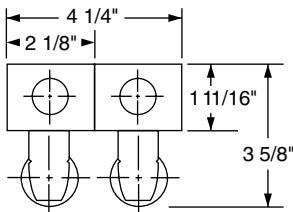
STC Staggered Series

Single Lamp Length	Double Lamp Length
24"	27"
36"	39"
48"	51"
93" (2 lamp)	99" (4 lamp)

STC Ordering Information

Series	# Lamps	Lamp Type	ELS Options
STC	1	17 = 17W 24" T8	ELS1 = Emergency Lighting (low lumens)
	2	20 = 20W 24" T12	ELS2 = Emergency Lighting (medium lumens)
	21 = Tandem two Lamps	25 = 25W 36" T8	ELS3 = Emergency Lighting (high lumens)
	22 = Tandem four Lamps	30 = 30W 36" T12	
		32 = 32W 48" T8	
		40 = 34 or 40W 48" T12	

Dimensions



Ballast	Voltage	Options
B5 = Electronic T12	UNV = 120-277V	<u>CORD AND PLUG</u>
B11 = Electronic T8	120 = 120V	CPT(x)
B11HP(x) = HPT8*	277 = 277V	1 = 120V
D = Dimming (specify ballast)		2 = 277V
		CP3 = Cord & Plug - 120V Straight Blade 5-15P
		<u>PLUG-IN CONNECTORS</u>
		<i>Ballast wired to Black:</i>
		PL1 - one circuit, two wires
		PL2 BK - two circuits, three wires
		<i>Ballast wired to Red:</i>
		PL2 RD - two circuits, three wires
		FB = Fast blow fuse
		SB = Slow blow fuse

*CEE listed T8; specify (L)ow, (N)ormal, or (H)igh ballast factor. Contact factory for NEMA Premium.