



Housing

Die-formed heavy gauge steel with high-gloss, baked white enamel finish over rust inhibiting phosphate coat. Hinges from either side for easy maintenance.

Shielding

Clear DR acrylic prismatic lens for improved impact resistance.

Electrical

Fully wired for UNV 120-277V, 50-60Hz operation with thermally protected, automatic resetting Class P, sound rated A ballast as standard unless otherwise specified. UL listed.

Mounting

Individual or continuous row (CR), surface mount. Only one CR band supplied with every tandem unit. For continuous row mounting, additional CR bands are needed.

SY950 Wraparound with clear prismatic lens is available in 2, 3, or 4-lamp models and tandem configurations, with T5 or T8 lamps. All models are suitable for low-density ceiling mount applications.



SY950 Ordering Information

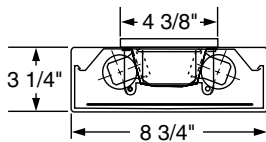
Series	# Lamps	Lamp Type
SY950	2	14 = 14W 24" T5
	3	17 = 17W 24" T8
	4	24 = 24W 24" T5HO
	22 = Tandem, 4 lamps	28 = 28W 48" T5
		32 = 32W 48" T8
		54 = 54W 48" T5HO

Options	Ballast	Voltage
SR = Specular reflector	B11 = Electronic T8	UNV = 120-277V
ELS1 = Emergency Lighting (low lumens)	B11HP(x) = HPT8*	120 = 120V
ELS2 = Emergency Lighting (medium lumens)	B12 = Electronic T5	277 = 277V
ELS3 = Emergency Lighting (high lumens)		

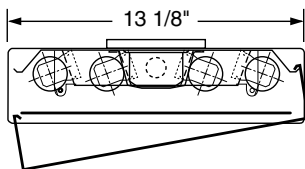
NOTE: 3 lamp models require low profile emergency ballast

*CEE listed T8; specify (L)ow, (N)ormal, or (H)igh ballast factor. Contact factory for NEMA Premium.

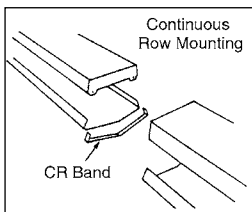
Dimensions



2 Lamp



4 Lamp



Accessories

CR = Continuous row mounting band