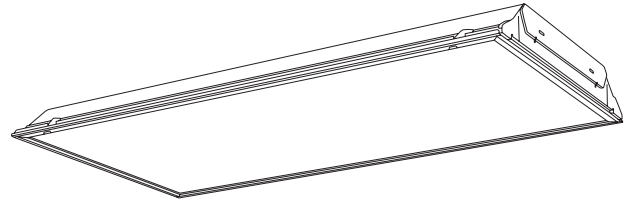


TY
Lensed troffer

CATALOG NUMBER _____
 TYPE _____
 DATE _____
 PREPARED BY _____
 PROJECT _____



HOUSING: Die-formed heavy gauge steel with high-gloss baked white enamel finish over rust inhibiting phosphate coat. X prefix specifies durable high gloss powder coat post paint finish (90% reflectance) over rust inhibiting phosphate coat. Flush white steel door frame (TE standard with black) with mitered corners can be hinged from either side. Access plate providing two knockouts and grounding screw.

SHIELDING: A variety of acrylic lens and louvers available. Specular silver or gold finishes available.

ELECTRICAL: Fully wired for 120V, 60Hz AC operation, thermally protected, automatic resetting, Class P, sound rated A, high-power factor ballast, unless otherwise specified. Electronic T8 shall be instant start, <20% harmonic distortion standard, specify suffix UNV for <10% harmonic distortion. Specify suffix UNV for universal voltage, 120 through 277V, 50/60Hz AC operation, Electronic T8 only. End of life protection is standard on twin tube fixtures. UL and C-UL listed.

MOUNTING: Lay-in (T) or Flange (F) troffer. 2 x 2 and 2x4 flanged fixtures require field assembly.

TY Ordering Information

Series	Diffuser	Door Frame	Size
T = Lay-In	Y = Clear prismatic acrylic (standard)	Steel, white (standard)	122 = 1 x 2
F = Flange	B = .125 clear prismatic polycarbonate	FW = Flush, aluminum, white	124 = 1 x 4
XF = Powder coat, flange	C = .200 clear prismatic acrylic	RW = Regressed, aluminum, white	242 = 2 x 2
XT = Powder coat, lay-in	K = .125 clear prismatic acrylic		244 = 2 x 4
	O = .140 high impact		
	P = acrylic drop dish		
	U = .156 clear prismatic acrylic		
	W = White acrylic		
	J = 3/4" x 3/4" x 1/2" Double Wedge Cell		
	Z = Other - Contact Factory		

# Lamps	Lamp Type	Options	Ballast	Switching	Voltage
2	14 = 14W 24" T5	SR = Specular Reflector	B11 = Electronic T8	<i>For 3 and 4 lamp units</i>	UNV = 120-277V
3	17 = 17W 24" T8	ELS1 = Emergency Lighting (low lumens)	B11HP(x) = HPT8*	Blank = dual ballasts	120 = 120V
4	24 = 24W 24" T5HO	ELS2 = Emergency Lighting (medium lumens)	B12 = Electronic T5	3L = (1) 3-lamp ballast	277 = 277V
	28 = 28W 48" T5	ELS3 = Emergency Lighting (high lumens)	B14 = Electronic TT	4L = (1) 4-lamp ballast	347 = 347V
	32 = 32W 48" T8		D = Dimming (specify ballast)	<i>For 2 lamp units</i>	
	32U = 32W U6" T8***			Blank = single ballast	
	40TT = 40W 22" TT**			2/1L = (2) 1-lamp ballasts	
	54 = 54W 48" T5HO				

*CEE listed T8; specify (L)ow, (N)ormal, or (H)igh ballast factor. Contact factory for NEMA Premium.

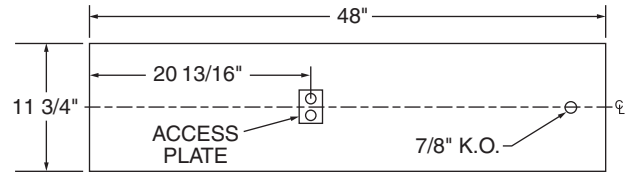
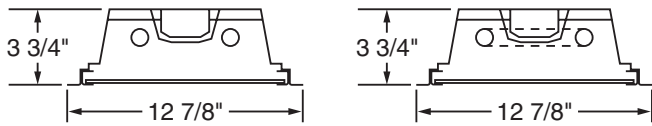
**Requires dedicated voltage ballast on 3-lamp models

***For 1-5/8" please specify.

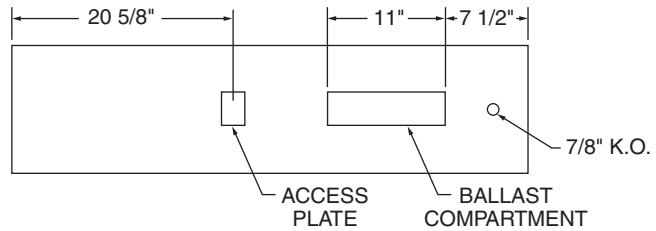
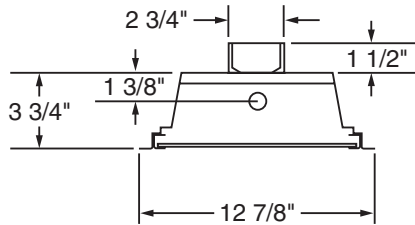
Options	Accessories
L = Lamps Installed (Specify Lamps) (U-lamp and TT lamps not installed)	EC = Earthquake Clip, 4-pack
FL4 = 3/8", 6' flex with two #18, one ground and two connectors	FTI (Flange Trim Kits)
FL5 = 3/8", 6' flex with three #18, one ground and two connectors	FTI 12 = 1' x 2'
M = Master; includes 9' intertie and snap-in connector	FTI 14 = 1' x 4'
S = Satellite; includes snap-in connector	FTI 22 = 2' x 2'
FB = Fast Blow Fuse	FTI 24 = 2' x 4'
SB = Slow Blow Fuse	
BP = Bulk Pack	
LG = Lens Gasketing	
LDG = Lens and Door Gasketing	
LDFG = Lens, Door, and Frame Gasketing	
M4 = MIRO 4 reflector (95% reflectivity)	

TY Lensed Troffer

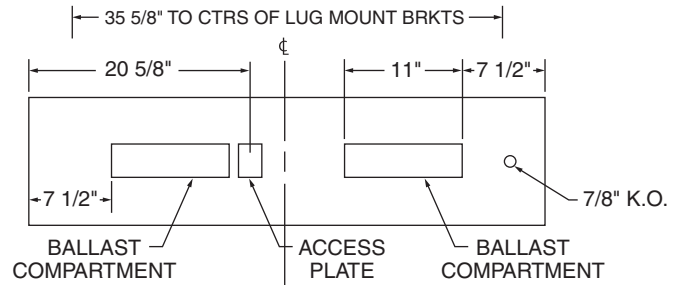
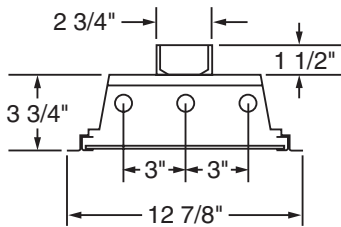
Dimensions



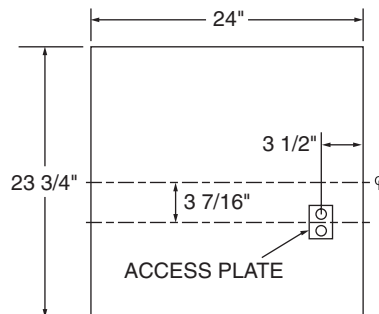
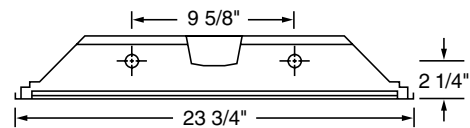
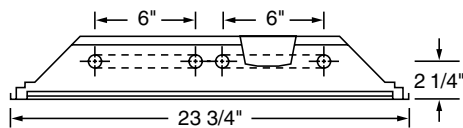
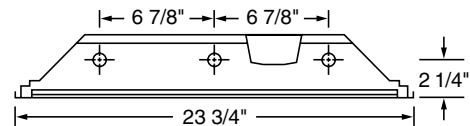
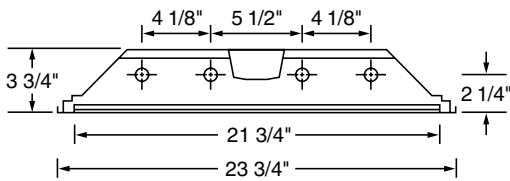
2 Lamp 1 x 4 Model



1 Lamp 1 x 4 Model



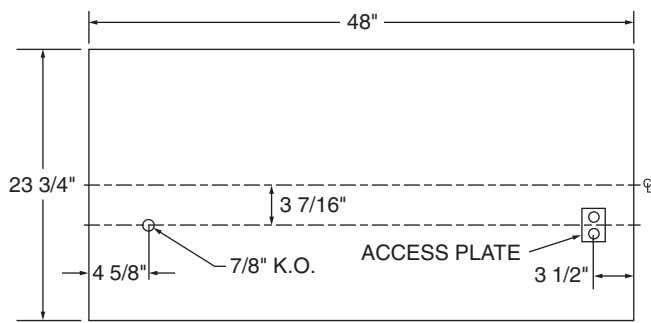
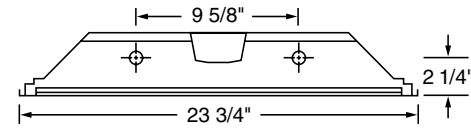
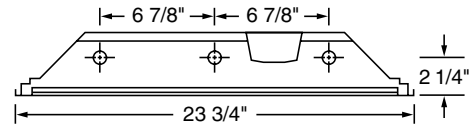
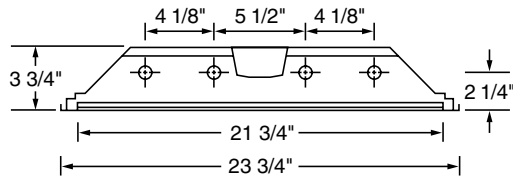
3 Lamp 1 x 4 Model



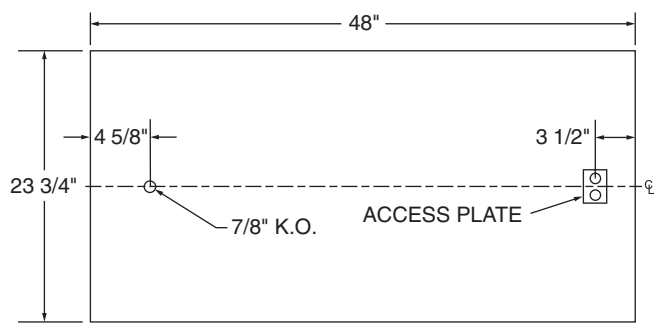
3 Lamp or U Lamp

TY Lensed Troffer

Dimensions



3 Lamp 2 x 4 Model



2 or 4 Lamp 2 x 4 Model

