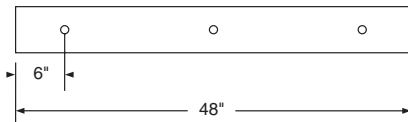
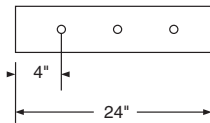
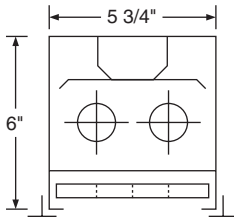




Simkar's TY66 Cube is a recessed 6" x 6" troffer, with either an acrylic prismatic diffuser or aluminum baffle louver, ideal for lobbies and corridors.



Dimensions



Housing

Die-formed heavy gauge steel with high-gloss, baked white enamel finish over rust inhibiting phosphate coat. End knockouts for through wire.

Shielding

Pattern A-12 prismatic acrylic lens standard.

Electrical

Fully wired for UNV 120-277V, 50-60Hz operation with thermally protected, automatic resetting Class P, sound rated A ballast as standard unless otherwise specified. UL listed damp location.

Mounting

Lay-in for T-bar ceilings.

TY66 Series Ordering Information

Series	Diffuser	Size	Lamps
T	Y = acrylic prismatic (standard) E = Aluminum baffle, semi-specular	66 = 6" x 6"	232 = (2) 32W 48" T8

Emergency Lighting	Ballast	Voltage
ELS1 = Emergency Lighting (low lumens)	B11 = Electronic T8	UNV = 120-277V
ELS2 = Emergency Lighting (medium lumens)	B11HP(x) = HPT8*	120 = 120V
ELS3 = Emergency Lighting (high lumens)		277 = 277V

*CEE listed T8; specify (L)ow, (N)ormal, or (H)igh ballast factor. Contact factory for NEMA Premium.