



UL Verification Services Inc.
7036 Snowdrift Road
Allentown, PA 18106
610-774-1300



Indoor Distribution Test Report

Relevant Standards
IES LM-79-2008
ANSI C82.77-2002

Prepared For
Simkar Corporation

Andre Duljas
700 Ramona Ave
Philadelphia, PA 19120
United States

Catalog Number
LCH4FA7035U1

Order Number
11334431
Test Number
1263059

Test Date

2016-06-27

Prepared By

Dane Hernandez-Adams, Technician

Approved By

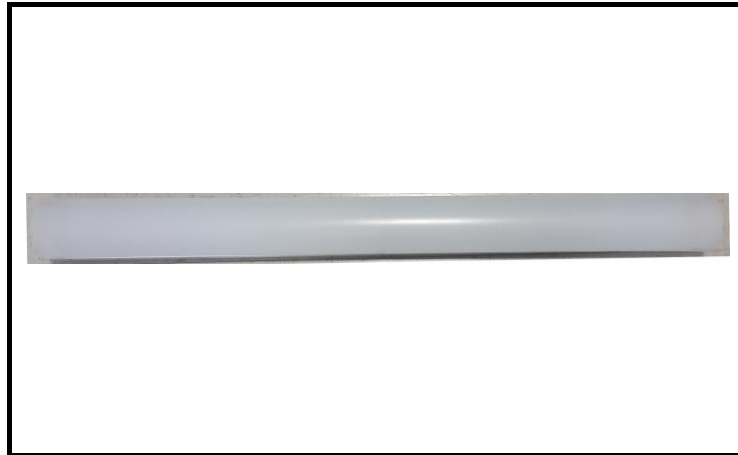
Carissa Samonte-cam, Project Handler

The results contained in this report pertain only to the tested sample.
This report shall not be reproduced, except in full, without written approval of Underwriters Laboratories.
This report must not be used by the client to claim product certification, approval, or endorsement by
NVLAP, NIST, or any agency of the Federal Government.



Luminaire Description: White steel housing, plastic frosted linear prismatic lens
Lamp: 96 white LEDs (2 boards of 48 LEDs)
Mounting: Recessed
Ballast/Driver: One Eaglerise EWP060C2100MED4

Luminaire



Luminaire Characteristics

Luminous Length: 48.00 in.
Luminous Width: 4.250 in.
Luminous Height: 1.50 in.

Summary of Results

Total Luminaire Output: 6425 Lumens
Luminaire Efficacy: 116.2 lm/w
Maximum Candela: 1941 Candela

Test Conditions

Test Temperature: 24.3 °C
Voltage: 119.9 VAC
Current: 0.4619 A
Power: 55.28 W
Power Factor: 0.998
Frequency: 60 Hz
Current THD: 5.33 %

Laboratory results may not be representative of field performance
Ballast factors have not been applied



Distribution - Goniophotometer

Distribution Test Conditions

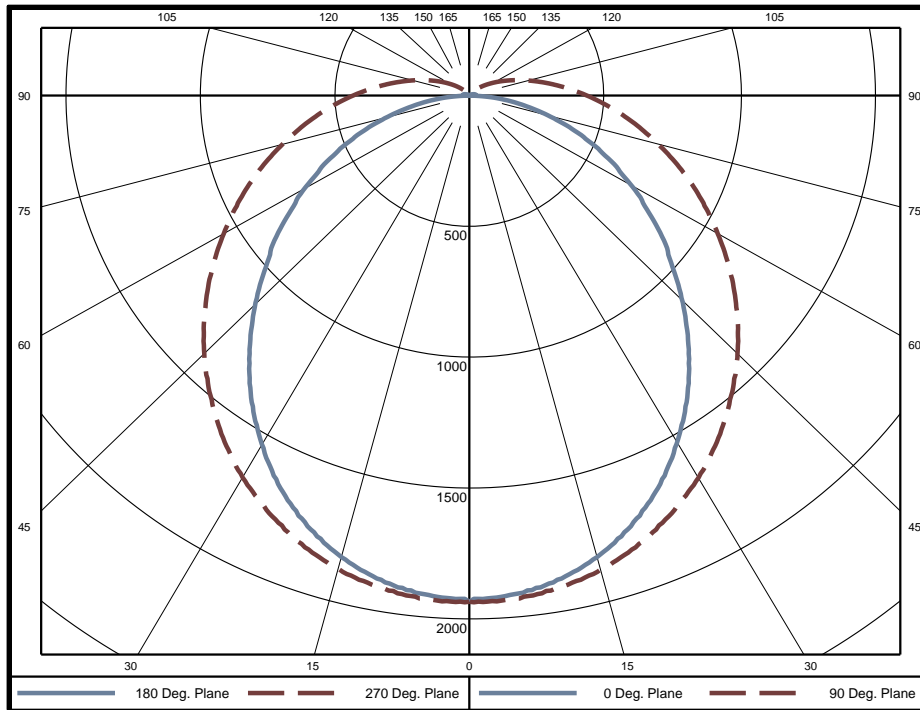
Temperature	Voltage	Current	Power	Power Factor	Frequency	Current THD
24.3 °C	119.9 VAC	0.4619 A	55.28 W	0.998	60 Hz	5.33 %

Summary of Results

Spacing Criteria
 0-180: 1.19
 90-270: 1.19

Total Lumen Output: 6425 Lumens
Luminaire Efficacy: 116.2 lm/w
Maximum Candela: 1941 Candela

Polar Plot



Zonal Lumen Summary

Zone	Lumens	% of Luminaire	Zone	Lumens	% of Luminaire	Zone	Lumens	% of Luminaire
0-5	46.1	0.7%	60-65	398.5	6.2%	120-125	17.5	0.3%
5-10	136.8	2.1%	65-70	354.5	5.5%	125-130	11.1	0.2%
10-15	222.7	3.5%	70-75	305.0	4.7%	130-135	6.5	0.1%
15-20	300.5	4.7%	75-80	253.2	3.9%	135-140	3.4	0.1%
20-25	367.5	5.7%	80-85	202.2	3.1%	140-145	1.5	0.0%
25-30	421.3	6.6%	85-90	155.0	2.4%	145-150	0.5	0.0%
30-35	460.4	7.2%	90-95	119.5	1.9%	150-155	0.1	0.0%
35-40	483.4	7.5%	95-100	93.0	1.4%	155-160	0	0.0%
40-45	491.2	7.6%	100-105	70.4	1.1%	160-165	0	0.0%
45-50	484.8	7.5%	105-110	52.1	0.8%	165-170	0	0.0%
50-55	466.0	7.3%	110-115	37.4	0.6%	170-175	0	0.0%
55-60	436.9	6.8%	115-120	26.1	0.4%	175-180	0	0.0%

Zone	Lumens	% of Luminaire
0-40	2439	38.0%
0-60	4318	67.2%
0-90	5986	93.2%
90-180	439	6.8%



Candela Tabulation
Horizontal Angle (Degrees)

	0	22.5	45	67.5	90	112.5	135	157.5	180	202.5	225	247.5	270	292.5	315	337.5
0	1935	1935	1935	1935	1935	1935	1935	1935	1935	1935	1935	1935	1935	1935	1935	1935
5	1913	1931	1920	1927	1929	1927	1920	1931	1913	1931	1920	1927	1929	1927	1920	1931
10	1879	1899	1895	1905	1909	1905	1895	1899	1879	1899	1895	1905	1909	1905	1895	1899
15	1827	1848	1851	1867	1874	1867	1851	1848	1827	1848	1851	1867	1874	1867	1851	1848
20	1752	1776	1788	1815	1823	1815	1788	1776	1752	1776	1788	1815	1823	1815	1788	1776
25	1655	1684	1710	1747	1761	1747	1710	1684	1655	1684	1710	1747	1761	1747	1710	1684
30	1537	1575	1616	1666	1686	1666	1616	1575	1537	1575	1616	1666	1686	1666	1616	1575
35	1409	1451	1510	1573	1597	1573	1510	1451	1409	1451	1510	1573	1597	1573	1510	1451
40	1266	1315	1392	1469	1498	1469	1392	1315	1266	1315	1392	1469	1498	1469	1392	1315
45	1120	1173	1268	1361	1394	1361	1268	1173	1120	1173	1268	1361	1394	1361	1268	1173
50	970	1028	1141	1248	1285	1248	1141	1028	970	1028	1141	1248	1285	1248	1141	1028
55	835	889	1011	1131	1169	1131	1011	889	835	889	1011	1131	1169	1131	1011	889
60	700	754	884	1012	1055	1012	884	754	700	754	884	1012	1055	1012	884	754
65	569	628	761	898	942	898	761	628	569	628	761	898	942	898	761	628
70	442	502	643	785	831	785	643	502	442	502	643	785	831	785	643	502
75	312	381	537	675	720	675	537	381	312	381	537	675	720	675	537	381
80	197	269	435	575	618	575	435	269	197	269	435	575	618	575	435	269
85	92	173	343	479	521	479	343	173	92	173	343	479	521	479	343	173
90	0	107	266	392	433	392	266	107	0	107	266	392	433	392	266	107
95	20	69	202	316	353	316	202	69	20	69	202	316	353	316	202	69
100	23	46	151	250	283	250	151	46	23	46	151	250	283	250	151	46
105	20	32	110	194	223	194	110	32	20	32	110	194	223	194	110	32
110	15	22	80	147	172	147	80	22	15	22	80	147	172	147	80	22
115	12	16	56	109	130	109	56	16	12	16	56	109	130	109	56	16
120	8	11	39	79	96	79	39	11	8	11	39	79	96	79	39	11
125	6	7	26	55	68	55	26	7	6	7	26	55	68	55	26	7
130	3	4	16	36	46	36	16	4	3	4	16	36	46	36	16	4
135	2	2	8	23	29	23	8	2	2	2	8	23	29	23	8	2
140	1	0	4	13	18	13	4	0	1	0	4	13	18	13	4	0
145	0	0	1	6	9	6	1	0	0	0	1	6	9	6	1	0
150	0	0	0	1	3	1	0	0	0	0	0	1	3	1	0	0
155	0	0	0	0	0	0	0	0	0	0	0	0	0	0	0	0
160	0	0	0	0	0	0	0	0	0	0	0	0	0	0	0	0
165	0	0	0	0	0	0	0	0	0	0	0	0	0	0	0	0
170	0	0	0	0	0	0	0	0	0	0	0	0	0	0	0	0
175	0	0	0	0	0	0	0	0	0	0	0	0	0	0	0	0
180	0	0	0	0	0	0	0	0	0	0	0	0	0	0	0	0

Average Luminance (cd/m²)
Horizontal Angle (Degrees)

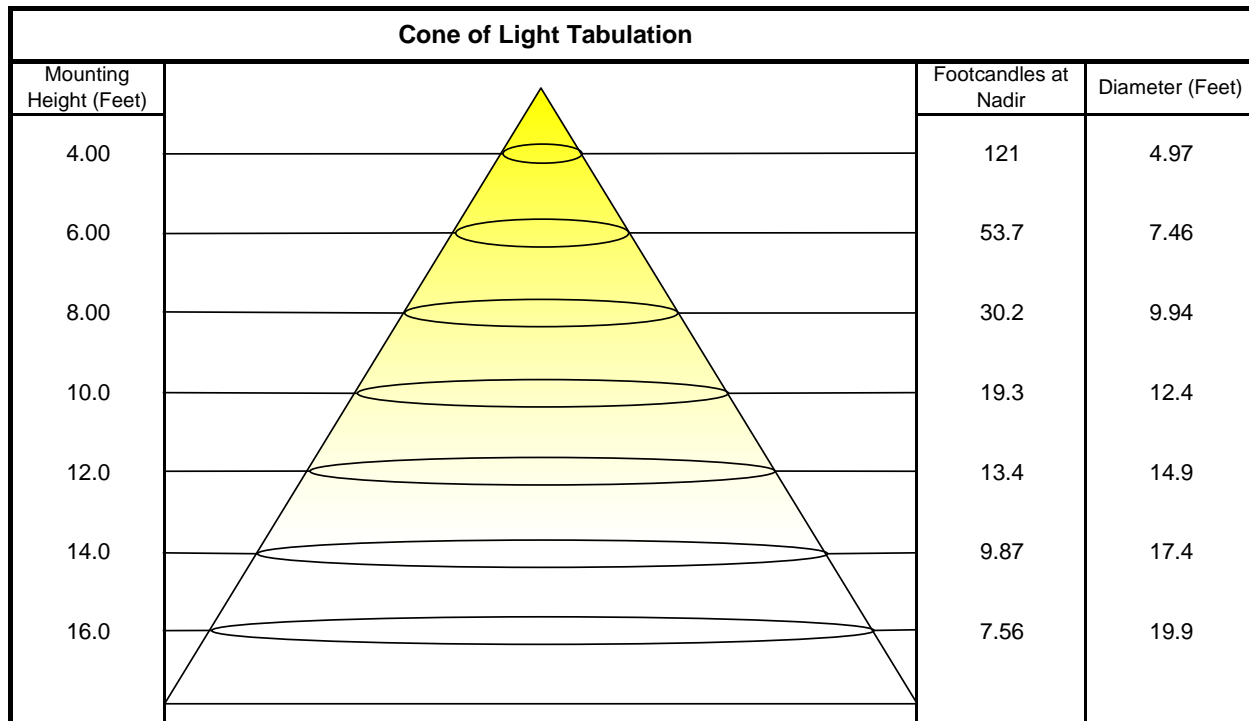
	0	45	90
0	14700	14700	14700
45	11670	10710	11080
55	10590	9653	10300
65	9582	8646	9643
75	8191	7822	9118
85	5932	7285	9027



Utilization of Lumens - Zonal Cavity Method

Effective Floor Cavity Reflectance 20%																		
Ceiling Cavity Reflectance	80				70				50			30			10			0
Wall Reflectance	70	50	30	10	70	50	30	10	50	30	10	50	30	10	50	30	10	0
Room Cavity Ratio (RCR)	** Values are expressed as Lumens delivered to the task surface **																	
0	7544	7544	7544	7544	7318	7318	7318	7318	6895	6895	6895	6508	6508	6508	6153	6153	6153	5986
1	6767	6411	6092	5805	6541	6220	5930	5668	5861	5624	5407	5532	5340	5162	5229	5075	4932	4761
2	6115	5534	5054	4650	5899	5373	4933	4559	5069	4702	4385	4789	4485	4218	4530	4281	4059	3889
3	5556	4833	4274	3828	5353	4696	4180	3765	4438	4001	3640	4199	3830	3521	3978	3669	3405	3239
4	5077	4268	3676	3223	4890	4151	3601	3176	3931	3458	3084	3727	3322	2994	3537	3192	2907	2747
5	4663	3805	3206	2763	4493	3706	3146	2727	3517	3030	2656	3342	2919	2586	3178	2812	2518	2366
6	4303	3421	2829	2404	4148	3335	2779	2375	3173	2684	2319	3022	2592	2263	2880	2503	2209	2064
7	3987	3098	2521	2117	3847	3024	2480	2094	2883	2400	2048	2752	2323	2003	2629	2248	1958	1820
8	3710	2824	2267	1884	3583	2760	2232	1865	2638	2164	1827	2523	2099	1789	2415	2036	1752	1622
9	3465	2590	2054	1692	3350	2534	2024	1675	2427	1966	1643	2326	1910	1612	2231	1856	1581	1457
10	3248	2388	1873	1531	3143	2339	1848	1517	2244	1798	1490	2155	1749	1463	2071	1702	1436	1319

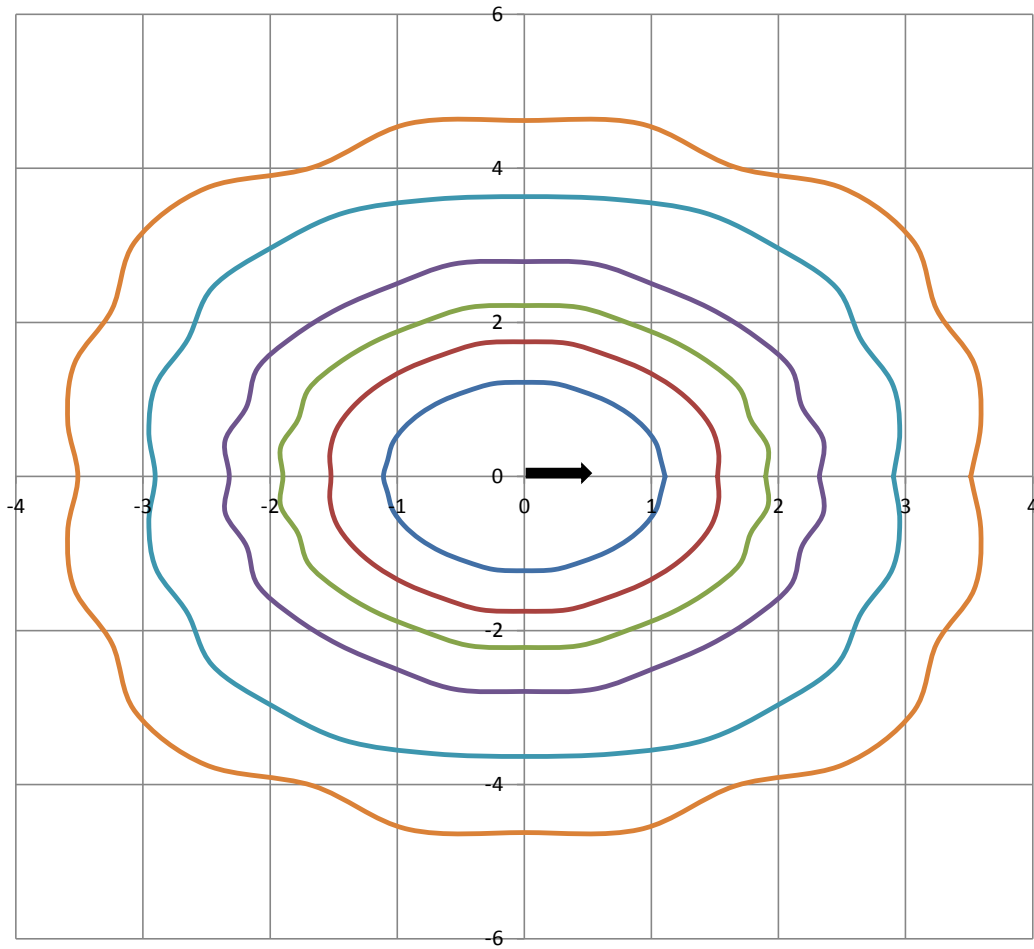
Beam and Field Information	
CIE Type:	Direct
Center Beam Intensity:	1935 Candela
Central Cone Intensity:	1931 Candela
Beam Flux:	4094.0 Lumens
Beam Angle (0-180):	100.2 Degrees
Beam Angle (90-270):	127.6 Degrees
Field Angle (0-180):	160.3 Degrees
Field Angle (90-270):	215.6 Degrees





ISOFootcandle Plot

Mounting Height - 8 Feet



Grid Lines in Units of Mounting Height

