

# LED UNDERCABINET LUMINAIRES

**LEDUC**



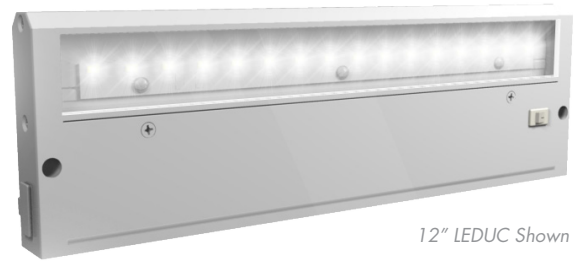
*Equivalent to 13W-140W  
xenon, halogen & fluorescent*



**SIMKAR**  
CORPORATION

LEDUC LED undercabinet luminaires, designed to provide bright, energy efficient task lighting in office, residential, hospitality, and retail display applications, deliver up to 91% energy savings, require no maintenance, and operate for 50,000 hours (L70). Utilizing tightly clustered premium LED chip packages powered by a 120V power supply, the LEDUC undercabinet series provides intense, uniform illumination with smooth dimming down to less than 10% on standard dimmers.

These slim profile LED undercabinet luminaires are available in 12", 18" and 24" lengths, and can be direct wired or interconnected using optional linking connectors to create custom sizes to fit any work area.



12" LEDUC Shown

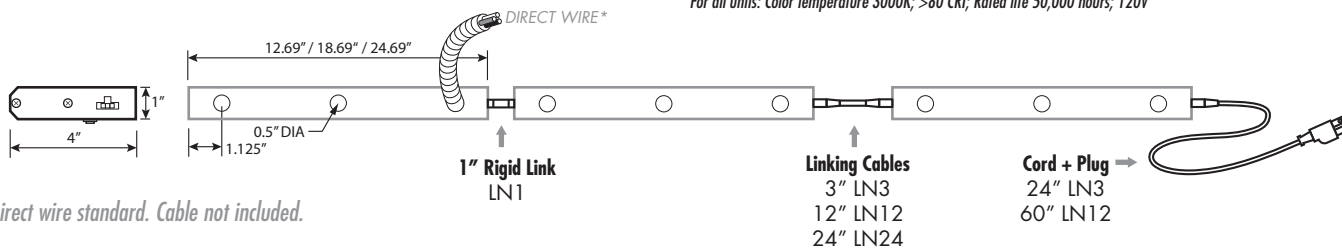
## Features

- More light, less energy - up to 91% energy savings vs. halogen/xenon
- 50,000 hour operating life (L70), lasts up to 25 times longer than halogen/xenon
- Low profile (1"D x 4"W) aluminum housing, white finish
- Warm white, color accurate illumination, 3000°K CCT, >80 CRI
- Smooth dimming down to 10% on most incandescent, magnetic low-voltage, or electronic low voltage dimmers
- Built-in 120V power supply for easier installation
- Direct wire or linkable for custom sizing
- Integrated on/off switch
- Includes 1/2" conduit connector for direct wiring
- UL / cUL listed Damp Location
- 5-year limited warranty

LEDUC Undercabinet Performance				
Series	Length	Light Output	Input Power	Equivalent
LEDUC12	12.69"	400 lumens	6.2W	40W - 70W halogen/xenon or 13W T5
LEDUC18	18.69"	560 lumens	8.6W	60W - 105W halogen/xenon or 13W T5
LEDUC24	24.69"	760 lumens	11.3W	80W - 140W halogen/xenon or 14W T5

For all units: Color temperature 3000K; >80 CRI; Rated life 50,000 hours; 120V

## Multiple modular power and linking options



\*Direct wire standard. Cable not included.



LN1



LN3 / LN12 / LN24

Linking connectors (optional)

Available in 1", 3", 12", and 24" lengths to link fixtures together.



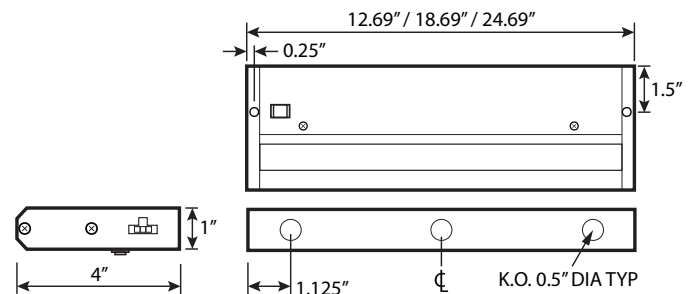
PC24 / PC60

24" or 60" 120V cord and plug (optional)

Used to plug fixture directly into outlet.

## LEDUC Ordering Information

Series	Length	Accessories
LEDUC	12 = 12"	<b>LINKING</b> LN1 = 1" linking connector, white LN3 = 3" linking cord, white LN12 = 12" linking cord, white LN24 = 24" linking cord, white  <b>POWER</b> PC24 = 24" power cord, white PC60 = 60" power cord, white
	18 = 18"	
	24 = 24"	



\*Consult factory for dimming options

