

LM-79-08 Test Report

For

SIMKAR CORPORATION

(Brand Name: )

LED Lamp

Model name(s): SALXS250U1

Model differences: N/A

Test & Report By:

Johnson Sun

Engineer: Johnson Sun

Date: Oct. 26, 2015



Review By:

Tommy Liang

Manager: Tommy Liang

Note: This report does not imply product certification, approval, or endorsement by NVLAP, NIST, or any agency of the Federal Government.

Laboratory: Standard-Tech Co. Ltd Testing Center

NVLAP CODE: 201011-0

Report Format Number STD/QR4909-A/2

Address: 8th floor, Block B, No. 11 Caipin Road, Guangzhou Science City, Tianhe, Guangzhou 510663, China

Tel: 8620-3229 0320

Fax: 8620-32290422


<http://www.standard-tech.com>

U.S. Department of Energy

Lighting Facts™ Uniform LM-79 Reporting Template
Laboratory Information:

Name of Test Laboratory	Standard-Tech Co., Ltd.
Date of Test Report	Oct.26, 2015
Test Report No.	GZE151038-01Q
Laboratory Contact Name	Tommy Liang

Product Information:

Organization Name	SIMKAR CORPORATION	
Brand Name		
Model Number	SALXS250U1	
SKU (if available)	N/A	
Type of Luminaire (for integral lamps, list base type and lamp type)	LED Lamp	
Luminaire Aperture (for downlights)	--	in.
Luminaire Length	--	mm
Luminaires Width	--	mm
Number of Units (modular products)	N/A	s

Goniophotometer
Electrical Measurements:
Output

Input Wattage	72.01	W
Input Current	0.2954	A
Input Voltage (ac)	277.2	V
Power Factor	0.8794	
Off-State Power	0	W

Photometric Characteristics

Total Initial Lumen Output	7643.5	lm
Initial Lumen Efficacy	106.15	lm/w
Correlated color temperature / CCT	--	K
Color rendering index / CRI	--	
R9 Value	--	
Duv	--	
Luminous Intensity Distribution		
Center beam candlepower (if applicable)	1742	cd
Beam angle (if applicable)	87.9	°
Zonal lumens in the 0°-60° zone	69.3	%
Zonal lumens in the 60°-90° zone	30.7	%
Zonal lumens in the 90°-120° zone	0	%
Zonal lumens in the 120°-180° zone	0	%

Laboratory: Standard-Tech Co. Ltd Testing Center
NVLAP CODE: 201011-0

Report Format Number STD/QR4909-A/2

Address: 8th floor, Block B, No. 11 Caipin Road, Guangzhou Science City, Tianhe, Guangzhou 510663, China

 Tel: 8620-3229 0320 Fax: 8620-32290422 <http://www.standard-tech.com>

Test Specifications:	
Date of Receipt	: Oct.21,2015
Date of Test	: Oct.22,2015
Test item	: Total Luminous Flux, Luminous Distribution Intensity, Luminous Efficacy, Electrical parameters
Reference Standard	IES LM-79-2008 Electrical and Photometric Measurements of Solid-State Lighting Products IESNA TM-16-05 Technical Memorandum on Light Emitting Diode (LED) Sources and Systems
Reference Work Instruction	QD25

Test Methods

1. Photometric and Electrical measurements – Light Distribution Method:

Photometric parameters were measured using the goniophotometer and software. The ambient temperature shall be maintained at $25^{\circ}\text{C} \pm 1^{\circ}\text{C}$, measured at a point not more than 1 m from the sample and at the same height as the sample. The sample was operated at 277Volts AC, 60Hz. It was stabilized before measurement was made. Luminous flux, luminaire efficacy, zonal lumen were calculated from the software taken at 1° vertical intervals and 22.5° horizontal intervals.

1. Product Information:

Brand Name	SIMKAR CORPORATION
Model Number	SALXS250U1
Luminaire Type	LED Lamp
Rated Voltage / Frequency	277Vac, 60Hz
Nominal Power	85W
Rated Initial Lamp Lumen	N/A
Declared CCT	5000K
IES	Type II - Medium
LED Manufacturer	NICHIA
LED Model	219C D320 5000K RA70
Power Supply:	EUG-075S175DT 120-277V
Sample Receipt Date	Oct.21,2015
Sample Number	GZE151038-01Q1

Photo



Laboratory: Standard-Tech Co. Ltd Testing Center

NVLAP CODE: 201011-0

Report Format Number STD/QR4909-A/2

Address: 8th floor, Block B, No. 11 Caipin Road, Guangzhou Science City, Tianhe, Guangzhou 510663, China

Tel: 8620-3229 0320 Fax: 8620-32290422 <http://www.standard-tech.com>

2.1 Electrical, Photometric and Chromaticity Measurements (Refer to Work Instruction QD25)	IES LM-79 2008
--	-----------------------

Test date	2015-10-22	Test Ambient:	25.1°C
Test Orientation	As intended	Stabilization Time (min)	90
Model Number	SALXS250U1		

Electrical Measurement:

Sample No.	Voltage (Vac)	Frequency (Hz)	Current (A)	Power (W)	Power Factor	THD %
GZE151038 -01Q1	277.2	60	0.2954	72.01	0.8794	17.64

Goniophotometer Method:

Parameter	Result
Test Voltage (V)	277.0
Frequency (Hz)	60
Total Luminous (lm)	7643.5
Luminous Efficacy (lm/W)	106.15
Beam Angle°	87.9
Center Beam Candle Power (cd)	1742

Zonal Lumen Tabulation:

Lumens Per Zone					
Zone	Lumens	% Total	Zone	Lumens	% Total
0-5	41.7	0.5%	90-95	0	0%
5-10	125.2	1.6%	95-100	0	0%
10-15	208.2	2.7%	100-105	0	0%
15-20	289.7	3.8%	105-110	0	0%
20-25	370.5	4.8%	110-115	0	0%
25-30	448.7	5.9%	115-120	0	0%
30-35	519.4	6.8%	120-125	0	0%
35-40	571.8	7.5%	125-130	0	0%
40-45	629.2	8.2%	130-135	0	0%
45-50	672.5	8.8%	135-140	0	0%
50-55	699.5	9.2%	140-145	0	0%
55-60	719.8	9.4%	145-150	0	0%
60-65	684.6	9.0%	150-155	0	0%
65-70	712.7	9.3%	155-160	0	0%
70-75	619.5	8.1%	160-165	0	0%
75-80	304.2	4.0%	165-170	0	0%
80-85	23.8	0.3%	170-175	0	0%
85-90	3.0	0.0%	175-180	0	0%

Laboratory: Standard-Tech Co. Ltd Testing Center

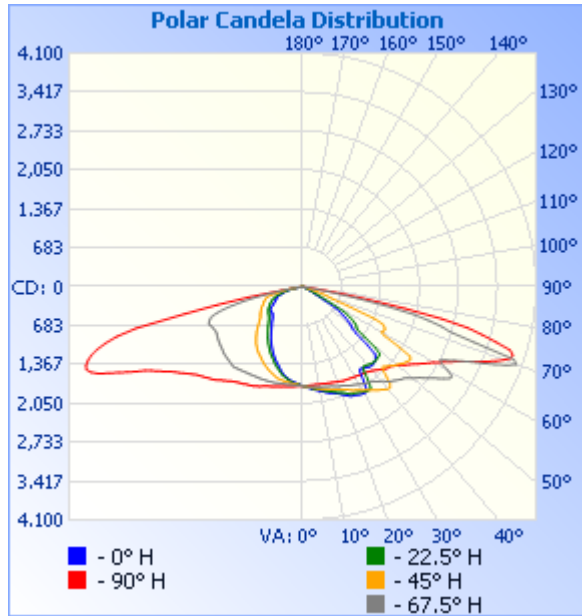
NVLAP CODE: 201011-0

Report Format Number STD/QR4909-A/2

Address: 8th floor, Block B, No. 11 Caipin Road, Guangzhou Science City, Tianhe, Guangzhou 510663, China

Tel: 8620-3229 0320 Fax: 8620-32290422 <http://www.standard-tech.com>

Photometric Data



Flood Summary				
	Efficiency	Lumens	Horizontal Spread	Vertical Spread
Field (10%):	98.5%	7,531.4	161	115.1
Beam (50%):	45%	3,436.0	43.5	87.9
Total:	100%	7,641.4		

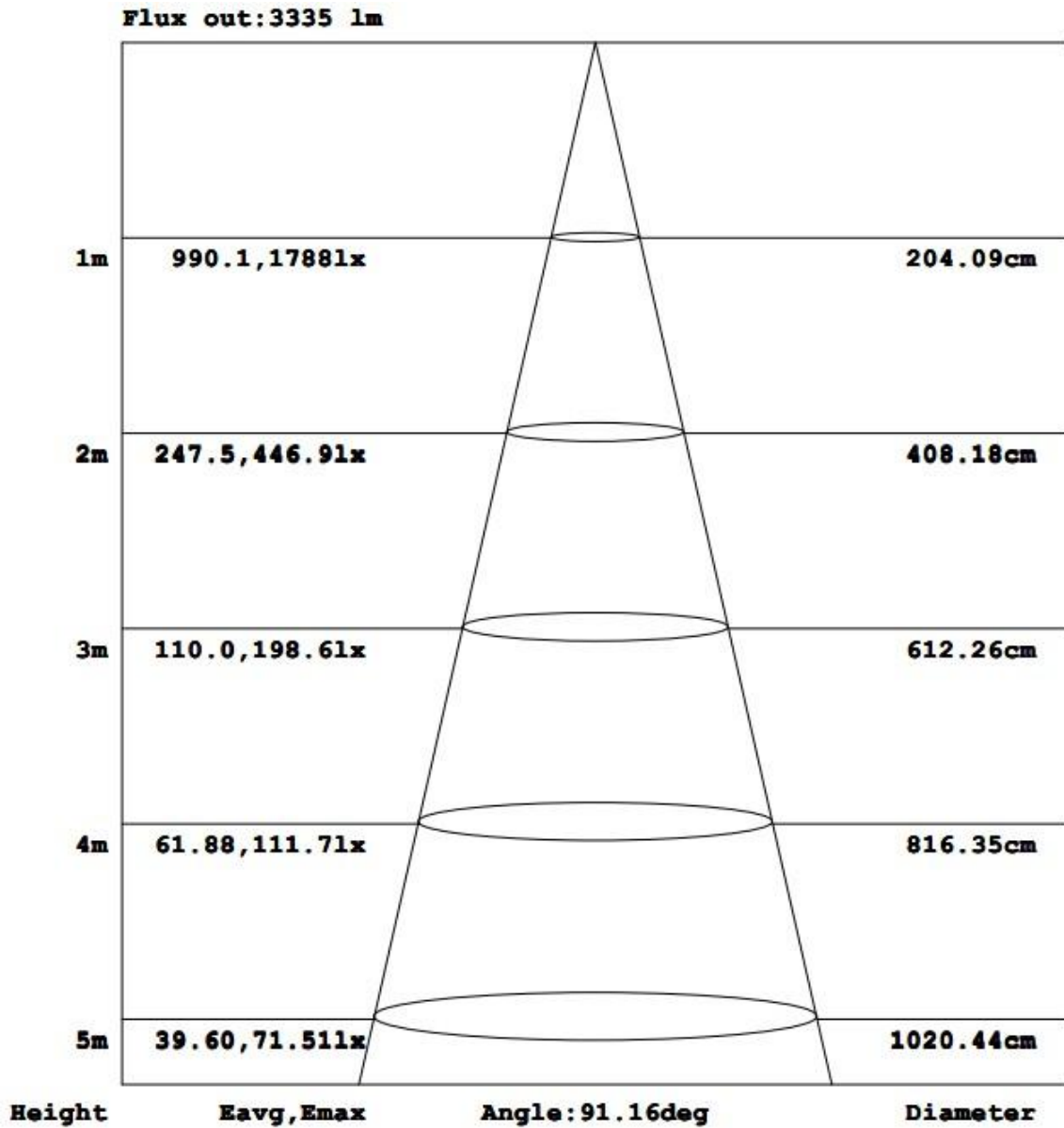
Laboratory: Standard-Tech Co. Ltd Testing Center
 NVLAP CODE: 201011-0

Report Format Number STD/QR4909-A/2

Address: 8th floor, Block B, No. 11 Caipin Road, Guangzhou Science City, Tianhe, Guangzhou 510663, China

Tel: 8620-3229 0320 Fax: 8620-32290422 <http://www.standard-tech.com>

Illuminance Plots



Laboratory: Standard-Tech Co. Ltd Testing Center

NVLAP CODE: 201011-0

Report Format Number STD/QR4909-A/2

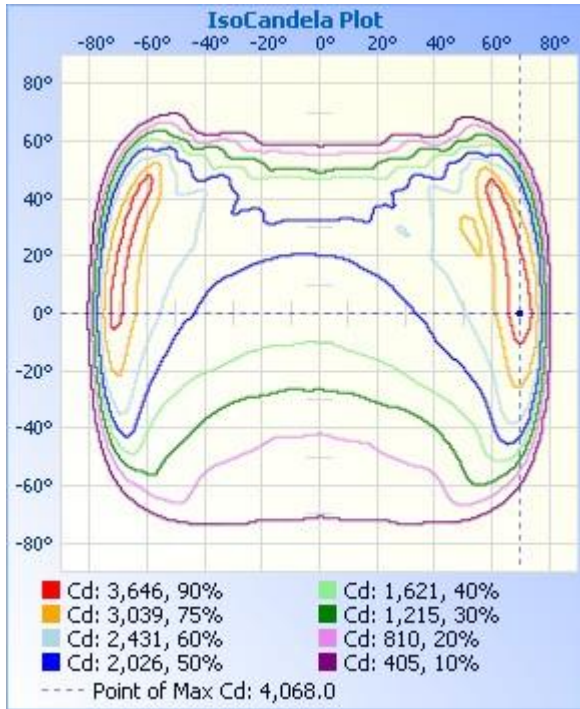
Address: 8th floor, Block B, No. 11 Caipin Road, Guangzhou Science City, Tianhe, Guangzhou 510663, China

Tel: 8620-3229 0320

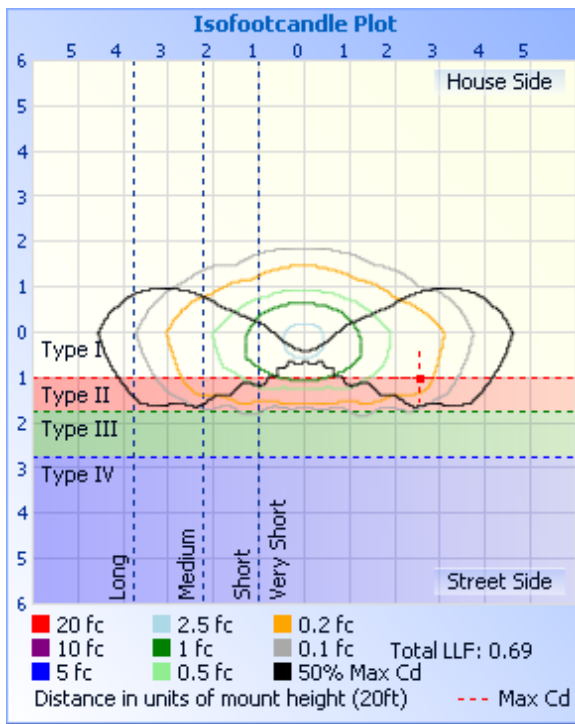
Fax: 8620-32290422

<http://www.standard-tech.com>

ISOCANDELA DIAGRAM



ISOLUX DIAGRAM



Laboratory: Standard-Tech Co. Ltd Testing Center

NVLAP CODE: 201011-0

Report Format Number STD/QR4909-A/2

Address: 8th floor, Block B, No. 11 Caipin Road, Guangzhou Science City, Tianhe, Guangzhou 510663, China

Tel: 8620-3229 0320

Fax: 8620-32290422

<http://www.standard-tech.com>

Candela Table - Type C

	0	22.5	45	67.5	90	112.5	135	157.5	180	202.5	225	247.5	270	292.5	315	337.5	360
0	1742	1742	1742	1742	1742	1742	1742	1742	1742	1742	1742	1742	1742	1742	1742	1742	1742
1	1752	1749	1750	1748	1743	1739	1735	1732	1731	1735	1737	1743	1743	1749	1746	1754	1752
2	1767	1760	1757	1752	1742	1730	1726	1719	1714	1724	1728	1738	1747	1756	1752	1764	1767
3	1779	1766	1764	1762	1738	1726	1716	1710	1706	1715	1724	1736	1753	1761	1765	1776	1779
4	1788	1778	1774	1762	1737	1716	1721	1696	1695	1706	1719	1734	1755	1769	1773	1787	1788
5	1802	1789	1782	1764	1737	1714	1712	1685	1686	1700	1715	1733	1758	1770	1792	1798	1802
6	1814	1799	1787	1771	1738	1710	1701	1672	1679	1694	1706	1734	1764	1779	1805	1811	1814
7	1827	1809	1794	1770	1734	1709	1691	1660	1664	1679	1704	1735	1766	1785	1815	1821	1827
8	1837	1817	1805	1778	1735	1706	1684	1646	1648	1666	1703	1735	1770	1794	1825	1830	1837
9	1853	1832	1815	1781	1738	1704	1681	1632	1635	1650	1697	1739	1776	1803	1839	1842	1853
10	1865	1842	1822	1787	1740	1705	1673	1617	1620	1633	1695	1739	1778	1811	1857	1854	1865
11	1875	1853	1831	1797	1740	1704	1664	1605	1604	1621	1690	1738	1786	1818	1866	1867	1875
12	1894	1867	1835	1796	1739	1699	1651	1589	1583	1602	1685	1744	1796	1821	1883	1880	1894
13	1908	1880	1846	1802	1746	1696	1638	1569	1559	1590	1680	1745	1801	1833	1896	1896	1908
14	1924	1896	1856	1810	1748	1694	1630	1544	1536	1564	1674	1747	1806	1846	1907	1917	1924
15	1932	1906	1865	1814	1753	1696	1615	1520	1507	1546	1670	1753	1814	1858	1920	1933	1932
16	1945	1921	1882	1821	1757	1693	1603	1497	1475	1520	1660	1756	1826	1871	1938	1950	1945
17	1962	1934	1888	1829	1760	1690	1592	1475	1450	1495	1646	1760	1833	1886	1943	1960	1962
18	1972	1951	1899	1842	1766	1687	1575	1452	1429	1477	1632	1760	1843	1896	1966	1966	1972
19	1992	1965	1913	1854	1772	1682	1562	1429	1404	1455	1620	1763	1849	1911	1978	1985	1992
20	2014	1978	1923	1864	1777	1678	1540	1405	1377	1433	1607	1766	1863	1932	1995	2007	2014
21	2037	1994	1940	1869	1781	1676	1526	1382	1351	1409	1594	1769	1871	1951	2014	2030	2037
22	2061	2016	1951	1871	1790	1673	1508	1360	1325	1380	1583	1770	1885	1965	2031	2049	2061
23	2084	2041	1967	1884	1799	1675	1492	1332	1298	1357	1566	1772	1904	1979	2053	2071	2084
24	2109	2064	1983	1902	1803	1673	1474	1308	1273	1336	1551	1775	1915	1998	2071	2092	2109
25	2112	2080	2006	1920	1801	1670	1458	1283	1246	1315	1538	1777	1927	2010	2089	2117	2112
26	2117	2080	2027	1928	1806	1668	1438	1258	1214	1290	1524	1777	1948	2023	2111	2128	2117
27	2132	2089	2041	1935	1811	1665	1420	1232	1187	1266	1506	1781	1952	2041	2140	2143	2132
28	2148	2103	2061	1949	1817	1661	1402	1207	1159	1240	1489	1783	1961	2070	2162	2160	2148
29	2154	2113	2076	1964	1823	1655	1384	1184	1134	1217	1472	1783	1971	2089	2188	2179	2154

Laboratory: Standard-Tech Co. Ltd Testing Center
 NVLAP CODE: 201011-0

Report Format Number STD/QR4909-A/2

Address: 8th floor, Block B, No. 11 Caipin Road, Guangzhou Science City, Tianhe, Guangzhou 510663, China

Tel: 8620-3229 0320 Fax: 8620-32290422 <http://www.standard-tech.com>

30	2162	2133	2104	1974	1830	1657	1365	1154	1105	1193	1452	1788	1978	2110	2206	2191	2162
31	2164	2148	2119	1992	1829	1656	1350	1128	1077	1167	1434	1795	1998	2128	2234	2210	2164
32	2116	2158	2140	2010	1841	1660	1332	1102	1049	1145	1421	1796	2007	2139	2262	2217	2116
33	1962	2162	2171	2024	1848	1659	1317	1077	1018	1118	1407	1805	2016	2163	2279	2225	1962
34	1807	2137	2194	2034	1857	1657	1301	1049	986	1095	1391	1808	2027	2187	2307	2183	1807
35	1763	2004	2221	2049	1859	1656	1283	1023	960	1070	1375	1814	2041	2218	2345	2028	1763
36	1775	1840	2249	2063	1869	1658	1259	996	931	1040	1357	1820	2062	2244	2373	1874	1775
37	1790	1763	2268	2082	1880	1655	1238	971	903	1016	1335	1829	2077	2272	2398	1818	1790
38	1806	1768	2293	2108	1891	1655	1213	948	879	989	1314	1833	2102	2298	2422	1830	1806
39	1820	1779	2324	2140	1906	1648	1189	924	857	966	1294	1844	2128	2342	2447	1832	1820
40	1832	1789	2342	2167	1923	1646	1168	903	838	943	1270	1853	2154	2372	2475	1840	1832
41	1844	1801	2345	2201	1942	1647	1149	882	818	922	1244	1859	2174	2401	2470	1842	1844
42	1844	1811	2299	2239	1967	1636	1128	862	799	901	1218	1853	2208	2419	2362	1849	1844
43	1837	1817	2158	2272	1992	1629	1106	841	776	879	1194	1842	2241	2441	2195	1861	1837
44	1825	1823	2028	2294	2021	1619	1086	822	760	859	1169	1839	2265	2470	2082	1867	1825
45	1809	1821	1989	2325	2045	1606	1065	804	746	839	1141	1833	2288	2503	2089	1864	1809
46	1778	1817	2022	2353	2063	1599	1047	788	731	822	1119	1831	2308	2527	2121	1863	1778
47	1736	1812	2050	2381	2073	1598	1025	774	722	807	1088	1825	2337	2560	2153	1862	1736
48	1528	1812	2078	2403	2088	1595	1007	766	711	795	1060	1820	2359	2599	2185	1849	1528
49	1240	1794	2107	2444	2119	1596	988	757	705	785	1034	1817	2384	2644	2206	1830	1240
50	1145	1665	2145	2500	2151	1592	967	750	699	777	1007	1811	2411	2688	2225	1652	1145
51	1103	1399	2164	2551	2191	1587	947	743	700	770	983	1799	2450	2741	2246	1376	1103
52	1061	1227	2196	2596	2239	1573	928	734	702	761	960	1790	2491	2802	2264	1243	1061
53	999	1187	2231	2662	2281	1569	912	724	705	751	936	1783	2533	2865	2290	1214	999
54	927	1162	2251	2729	2321	1573	899	716	701	741	916	1781	2584	2948	2311	1185	927
55	853	1122	2273	2795	2370	1565	887	706	694	731	904	1769	2638	3032	2337	1133	853
56	780	1071	2287	2883	2429	1559	876	697	680	724	893	1765	2685	3119	2356	1065	780
57	701	999	2252	2962	2482	1551	867	686	650	717	883	1755	2741	3201	2235	989	701
58	451	925	2000	3039	2541	1544	856	672	624	704	872	1750	2812	3240	1914	892	451
59	293	834	1681	3063	2597	1533	847	654	603	689	861	1737	2886	3136	1687	799	293
60	226	588	1599	2952	2665	1518	835	639	587	678	846	1735	2965	2956	1673	501	226
61	181	354	1616	2786	2744	1503	822	629	568	665	835	1720	3039	2865	1674	315	181

Laboratory: Standard-Tech Co. Ltd Testing Center
 NVLAP CODE: 201011-0

Report Format Number STD/QR4909-A/2

Address: 8th floor, Block B, No. 11 Caipin Road, Guangzhou Science City, Tianhe, Guangzhou 510663, China

Tel: 8620-3229 0320 Fax: 8620-32290422 <http://www.standard-tech.com>

62	139	278	1627	2742	2815	1495	811	620	550	650	820	1715	3138	2944	1671	246	139
63	104	224	1623	2846	2910	1490	797	608	538	634	810	1716	3281	3056	1651	194	104
64	51	173	1594	2956	3002	1475	783	592	525	618	796	1726	3424	3181	1613	145	51
65	25	129	1548	3093	3114	1460	764	579	514	603	776	1730	3567	3367	1538	107	25
66	10	50	1381	3247	3243	1442	749	572	505	591	756	1739	3733	3554	1166	38	10
67	4	20	862	3444	3372	1432	738	562	494	575	748	1754	3901	3741	646	17	4
68	2	8	552	3642	3504	1422	729	542	480	548	738	1770	4012	3879	476	6	2
69	2	3	463	3840	3642	1411	720	524	462	527	724	1765	4068	3959	390	3	2
70	2	3	376	3994	3760	1408	707	510	415	512	710	1743	4051	3919	308	2	2
71	1	2	281	3926	3863	1393	692	466	391	468	695	1717	3990	3282	122	2	1
72	1	2	56	3174	3882	1387	678	427	372	415	682	1664	3905	2626	25	1	1
73	1	1	10	2692	3811	1363	664	403	352	392	660	1575	3775	2474	7	1	1
74	1	1	4	2553	3538	1302	637	378	328	365	632	1453	3608	2302	4	1	1
75	0	1	4	2297	3266	1156	562	347	302	336	580	1285	3382	2043	4	0	0
76	0	1	3	2021	2993	967	466	314	267	302	454	1096	3012	1729	3	0	0
77	0	1	2	1513	2508	823	430	273	209	257	407	908	2128	1114	2	0	0
78	0	0	2	999	1831	651	389	206	147	189	361	631	1545	492	2	0	0
79	0	0	1	484	1158	496	322	137	73	124	305	462	963	285	1	0	0
80	0	0	1	244	677	370	262	60	23	53	245	315	382	32	1	0	0
81	0	0	1	15	274	244	152	23	21	22	132	199	162	7	1	0	0
82	0	0	1	7	70	125	67	22	20	22	54	80	24	6	1	0	0
83	0	0	1	5	11	24	25	21	20	21	24	19	11	5	1	0	0
84	0	0	0	4	8	18	23	20	19	20	22	16	8	4	1	0	0
85	0	0	0	4	7	15	21	20	18	20	21	13	7	4	0	0	0
86	0	0	0	3	6	11	19	18	18	18	19	11	6	3	0	0	0
87	0	0	0	2	6	9	17	17	16	17	16	9	6	3	0	0	0
88	0	0	0	2	5	6	11	13	12	13	12	6	5	2	0	0	0
89	0	0	0	2	4	2	1	0	0	0	1	2	4	2	0	0	0
90	0	0	0	0	0	0	0	0	0	0	0	0	0	0	0	0	0
91	0	0	0	0	0	0	0	0	0	0	0	0	0	0	0	0	0
92	0	0	0	0	0	0	0	0	0	0	0	0	0	0	0	0	0
93	0	0	0	0	0	0	0	0	0	0	0	0	0	0	0	0	0

Laboratory: Standard-Tech Co. Ltd Testing Center
 NVLAP CODE: 201011-0

Report Format Number STD/QR4909-A/2

Address: 8th floor, Block B, No. 11 Caipin Road, Guangzhou Science City, Tianhe, Guangzhou 510663, China

Tel: 8620-3229 0320 Fax: 8620-32290422 <http://www.standard-tech.com>



94	0	0	0	0	0	0	0	0	0	0	0	0	0	0	0	0
95	0	0	0	0	0	0	0	0	0	0	0	0	0	0	0	0
96	0	0	0	0	0	0	0	0	0	0	0	0	0	0	0	0
97	0	0	0	0	0	0	0	0	0	0	0	0	0	0	0	0
98	0	0	0	0	0	0	0	0	0	0	0	0	0	0	0	0
99	0	0	0	0	0	0	0	0	0	0	0	0	0	0	0	0
100	0	0	0	0	0	0	0	0	0	0	0	0	0	0	0	0
101	0	0	0	0	0	0	0	0	0	0	0	0	0	0	0	0
102	0	0	0	0	0	0	0	0	0	0	0	0	0	0	0	0
103	0	0	0	0	0	0	0	0	0	0	0	0	0	0	0	0
104	0	0	0	0	0	0	0	0	0	0	0	0	0	0	0	0
105	0	0	0	0	0	0	0	0	0	0	0	0	0	0	0	0
106	0	0	0	0	0	0	0	0	0	0	0	0	0	0	0	0
107	0	0	0	0	0	0	0	0	0	0	0	0	0	0	0	0
108	0	0	0	0	0	0	0	0	0	0	0	0	0	0	0	0
109	0	0	0	0	0	0	0	0	0	0	0	0	0	0	0	0
110	0	0	0	0	0	0	0	0	0	0	0	0	0	0	0	0
111	0	0	0	0	0	0	0	0	0	0	0	0	0	0	0	0
112	0	0	0	0	0	0	0	0	0	0	0	0	0	0	0	0
113	0	0	0	0	0	0	0	0	0	0	0	0	0	0	0	0
114	0	0	0	0	0	0	0	0	0	0	0	0	0	0	0	0
115	0	0	0	0	0	0	0	0	0	0	0	0	0	0	0	0
116	0	0	0	0	0	0	0	0	0	0	0	0	0	0	0	0
117	0	0	0	0	0	0	0	0	0	0	0	0	0	0	0	0
118	0	0	0	0	0	0	0	0	0	0	0	0	0	0	0	0
119	0	0	0	0	0	0	0	0	0	0	0	0	0	0	0	0
120	0	0	0	0	0	0	0	0	0	0	0	0	0	0	0	0
121	0	0	0	0	0	0	0	0	0	0	0	0	0	0	0	0
122	0	0	0	0	0	0	0	0	0	0	0	0	0	0	0	0
123	0	0	0	0	0	0	0	0	0	0	0	0	0	0	0	0
124	0	0	0	0	0	0	0	0	0	0	0	0	0	0	0	0
125	0	0	0	0	0	0	0	0	0	0	0	0	0	0	0	0

Laboratory: Standard-Tech Co. Ltd Testing Center
NVLAP CODE: 201011-0

Report Format Number STD/QR4909-A/2

Address: 8th floor, Block B, No. 11 Caipin Road, Guangzhou Science City, Tianhe, Guangzhou 510663, China

Tel: 8620-3229 0320 Fax: 8620-32290422 <http://www.standard-tech.com>

126	0	0	0	0	0	0	0	0	0	0	0	0	0	0	0	0
127	0	0	0	0	0	0	0	0	0	0	0	0	0	0	0	0
128	0	0	0	0	0	0	0	0	0	0	0	0	0	0	0	0
129	0	0	0	0	0	0	0	0	0	0	0	0	0	0	0	0
130	0	0	0	0	0	0	0	0	0	0	0	0	0	0	0	0
131	0	0	0	0	0	0	0	0	0	0	0	0	0	0	0	0
132	0	0	0	0	0	0	0	0	0	0	0	0	0	0	0	0
133	0	0	0	0	0	0	0	0	0	0	0	0	0	0	0	0
134	0	0	0	0	0	0	0	0	0	0	0	0	0	0	0	0
135	0	0	0	0	0	0	0	0	0	0	0	0	0	0	0	0
136	0	0	0	0	0	0	0	0	0	0	0	0	0	0	0	0
137	0	0	0	0	0	0	0	0	0	0	0	0	0	0	0	0
138	0	0	0	0	0	0	0	0	0	0	0	0	0	0	0	0
139	0	0	0	0	0	0	0	0	0	0	0	0	0	0	0	0
140	0	0	0	0	0	0	0	0	0	0	0	0	0	0	0	0
141	0	0	0	0	0	0	0	0	0	0	0	0	0	0	0	0
142	0	0	0	0	0	0	0	0	0	0	0	0	0	0	0	0
143	0	0	0	0	0	0	0	0	0	0	0	0	0	0	0	0
144	0	0	0	0	0	0	0	0	0	0	0	0	0	0	0	0
145	0	0	0	0	0	0	0	0	0	0	0	0	0	0	0	0
146	0	0	0	0	0	0	0	0	0	0	0	0	0	0	0	0
147	0	0	0	0	0	0	0	0	0	0	0	0	0	0	0	0
148	0	0	0	0	0	0	0	0	0	0	0	0	0	0	0	0
149	0	0	0	0	0	0	0	0	0	0	0	0	0	0	0	0
150	0	0	0	0	0	0	0	0	0	0	0	0	0	0	0	0
151	0	0	0	0	0	0	0	0	0	0	0	0	0	0	0	0
152	0	0	0	0	0	0	0	0	0	0	0	0	0	0	0	0
153	0	0	0	0	0	0	0	0	0	0	0	0	0	0	0	0
154	0	0	0	0	0	0	0	0	0	0	0	0	0	0	0	0
155	0	0	0	0	0	0	0	0	0	0	0	0	0	0	0	0
156	0	0	0	0	0	0	0	0	0	0	0	0	0	0	0	0
157	0	0	0	0	0	0	0	0	0	0	0	0	0	0	0	0

Laboratory: Standard-Tech Co. Ltd Testing Center
NVLAP CODE: 201011-0

Report Format Number STD/QR4909-A/2

Address: 8th floor, Block B, No. 11 Caipin Road, Guangzhou Science City, Tianhe, Guangzhou 510663, China

Tel: 8620-3229 0320 Fax: 8620-32290422 <http://www.standard-tech.com>



158	0	0	0	0	0	0	0	0	0	0	0	0	0	0	0	0
159	0	0	0	0	0	0	0	0	0	0	0	0	0	0	0	0
160	0	0	0	0	0	0	0	0	0	0	0	0	0	0	0	0
161	0	0	0	0	0	0	0	0	0	0	0	0	0	0	0	0
162	0	0	0	0	0	0	0	0	0	0	0	0	0	0	0	0
163	0	0	0	0	0	0	0	0	0	0	0	0	0	0	0	0
164	0	0	0	0	0	0	0	0	0	0	0	0	0	0	0	0
165	0	0	0	0	0	0	0	0	0	0	0	0	0	0	0	0
166	0	0	0	0	0	0	0	0	0	0	0	0	0	0	0	0
167	0	0	0	0	0	0	0	0	0	0	0	0	0	0	0	0
168	0	0	0	0	0	0	0	0	0	0	0	0	0	0	0	0
169	0	0	0	0	0	0	0	0	0	0	0	0	0	0	0	0
170	0	0	0	0	0	0	0	0	0	0	0	0	0	0	0	0
171	0	0	0	0	0	0	0	0	0	0	0	0	0	0	0	0
172	0	0	0	0	0	0	0	0	0	0	0	0	0	0	0	0
173	0	0	0	0	0	0	0	0	0	0	0	0	0	0	0	0
174	0	0	0	0	0	0	0	0	0	0	0	0	0	0	0	0
175	0	0	0	0	0	0	0	0	0	0	0	0	0	0	0	0
176	0	0	0	0	0	0	0	0	0	0	0	0	0	0	0	0
177	0	0	0	0	0	0	0	0	0	0	0	0	0	0	0	0
178	0	0	0	0	0	0	0	0	0	0	0	0	0	0	0	0
179	0	0	0	0	0	0	0	0	0	0	0	0	0	0	0	0
180	0	0	0	0	0	0	0	0	0	0	0	0	0	0	0	0

Laboratory: Standard-Tech Co. Ltd Testing Center
NVLAP CODE: 201011-0

Report Format Number STD/QR4909-A/2

Address: 8th floor, Block B, No. 11 Caipin Road, Guangzhou Science City, Tianhe, Guangzhou 510663, China

Tel: 8620-3229 0320 Fax: 8620-32290422 <http://www.standard-tech.com>

BUG Rating:B3-U0-G3

IESNA Luminaire Flux Distribution Table:

Zone	Lumens	Luminaire %
FL - Front-Low(0-30)	824.18	10.8
FM - Front-Medium(30-60)	2352	30.8
FH - Front-High(60-80)	1258.3	16.5
FVH - Front-Very High(80-90)	4.4358	0.1
Total Forward Light	4439	58.1

BL - Back-Low(0-30)	659.67	8.6
BM - Back-Medium(30-60)	1460.5	19.1
BH - Back-High(60-80)	1062	13.9
BVH - Back-Very High(80-90)	22.336	0.3
Total Back Light	3204.6	41.9

UL - Uplight-Low(90-100)	0	0.0
UH - Uplight-High(100-180)	0	0.0
Total Up Light	0	0.0

BUG(Back,Up,Glare) Rating	B3-U0-G3
---------------------------	----------

Zone	Downward Lumens	Upward Lumens	Total Lumens
House Side	4439	0	4439
Street Side	3204.6	0	3204.6

3. Test Equipment

Equipment ID	Equipment Name	Last Calibration Date	Next Calibration Date
EE-09	Goniophotometer system	2015-07-01	2016-06-30
D908S	Standard Lamp	2015-07-01	2016-06-30
PF210	Power Meter for Goniophotometer	2015-07-01	2016-06-30
Uncertainty Photometric Measurement (Sphere):1.74% Chromaticity Measurement(Sphere):14.3K Photometric Measurement(Goniophotometer):1.62%			

******* END OF DATASHEET PACKAGE *******