



# IES LM-79-08

## MEASUREMENT AND TEST REPORT

For

### SIMKAR Corp

700 Ramona Avenue, Philadelphia PA 19120.

**Test Model: LDP1439L50U1**

<b>Report Type:</b>	Electrical and Photometric tests including: Input Current, Power, Power Factor, Luminous Flux, Luminous Efficacy, CRI, CCT, Chromaticity Coordinate, Spectral Power Distribution
<b>Test Engineer:</b>	Carl Du <i>Carl Du</i>
<b>Report Number:</b>	RKS170414002-10A2
<b>Test Date:</b>	2016-07-30
<b>Report Date:</b>	2017-04-17
<b>Reviewed By:</b>	Blake Zhang <i>Blake Zhang</i>
<b>Prepared By:</b>	Bay Area Compliance Laboratories Corp. (Dongguan). No.69, Pulongcun, Puxinhu Industry Area, Tangxia, Dongguan, Guangdong, China. Tel: +86-0769-86858888 Fax: +86-0769-86858588
<b>Test Facility:</b>	Test facility was located at No.69, Pulongcun, Puxinhu Industry Area, Tangxia, Dongguan, Guangdong, China.
<b>Accreditation:</b>	The IAS Accreditation Number TL-460.

**Note:** The test data was only valid for the test sample(s). This test report is prepared for the customer shown above and for the device described herein. It may not be duplicated or used in part without prior written consent from Bay Area Compliance Laboratories Corp. (Dongguan). This report is valid only with a valid digital signature. The digital signature may be available only under the Adobe software above version 7.0.

## 1. Product Description

### General Information:

One sample was received on 2016-07-27 and used for testing.

Model Tested: LDP1439L50U1  
 Manufacturer: SIMKAR Corp  
 Brand Name: SIMKAR  
 Product Designation: 1x4 Luminaires for Ambient Lighting of Interior Commercial Spaces  
 Dimmable: Continuous  
 Dimming Range: 10% to 100%  
 Burning Time Before Test: 0hour(For New Products)

### Rated Values:

Rated Voltage/Frequency: 120-277VAC, 60Hz  
 Rated Power: 40W  
 Nominal CCT: 5000K  
 Nominal Lumen Output: 4000lm  
 Nominal CRI: 80

### Note:

1. The applicant SIMKAR Corp declare that their product with model LDP1439L50U1 is the same to the product in report# RKS160727006-10A2 and is authorized by original applicant to use their test data.
2. All the data in previous report (RKS160727006-10A2) is shared in report.

## 2. Standards Used

- IES LM-79-08: Approved Method: Electrical & Photometric Measurement of Solid-state Lighting Products
- ANSI C82.77-2002: Harmonic Emission Limits – Related Power Quality Requirements for Lighting
- IES TM-30-15: IES Method for Evaluating Light Source Color Rendition (This method is not in IAS accreditation scope)

## 3. Description of Test Equipment

Device	Manufacture	Model No	Serial No	Test Range	Calibration date	Calibration due date
2.0m integrating sphere	EVERFINE	R98	11010018	R98	2015-11-09	2016-11-08
High accuracy array spectroradiometer	EVERFINE	HAAS-2000	1012016T	380-780nm	2016-03-10	2017-03-09
Digital Power Meter	EVERFINE	PF2010A	1011004	600V/20A	2016-07-11	2017-07-10
Digital CC&CV DC Power Supply	EVERFINE	WY305-V1	1101047	30V/5A	2016-07-07	2017-07-06
Temperature/humidity/clock	Victor	VC230	EE023	0~40°C0~90%	2016-03-21	2017-03-20
Standard Light Source	SENSING	N/A	LSD090808	N/A	2015-09-25	2016-09-24
Special zero-voltage synchronous switching AC	EVERFINE	DPS1010-YF	1011001T	30V/5A	2016-03-04	2017-03-03

Statement of Traceability: Bay Area Compliance Laboratories Corp. (Dongguan) attested that all calibration has been performed using suitable standards traceable to National Primary Standards and International System of Units (SI).

#### 4. Test Method

Product was tested with no seasoning. All stabilization and measurements were made in compliance with IES LM-79-08. The product was operated at rated voltage or at voltage required by manufacturer. The ambient temperature of the sample was maintained at  $25^{\circ}\text{C}\pm 1^{\circ}\text{C}$  during measurement. And relative humidity is less than 65%.

##### **Integrating Sphere System**

The system includes AC power source, digital power meter, DC power supply, Spectroradiometer, and integrating sphere. The integrating sphere system is calibrated by standard spectrum light source before measurement.

$4\pi$  geometry was used during measurement. The product was operated in its intended orientation in application and was recorded in this report.

The uncertainty of the light output (luminous flux) measurements is  $U=1.8\%$  ( $K=2$ ), at the 95% confidence level. The uncertainty of the correlated color temperature measurements is  $U=20\text{K}$  ( $K=2$ ), at the 95% confidence level. The uncertainty of the CRI is  $U=1.8(K=2)$ , at the 95% confidence level.

The uncertainty of power meter AC current  $U=0.19\%$  of rdg, AC Voltage  $U=0.15\%$  of rdg, Power  $U=0.20\%$  ( $K=2$ ), at the 95% confidence level.

##### **Fidelity Index and Gamut Index Calculation**

The  $R_f$ ,  $R_g$  was calculated according to IES TM-30-15 by using calculation tools. The calculation was based on the measured SPD from 380nm to 780nm with 1nm intervals. All the colors in this report is for reference only.

## 5. Test Result

### [Integrating Sphere System]

Total operating time for integrating sphere test: **0.5 hour**

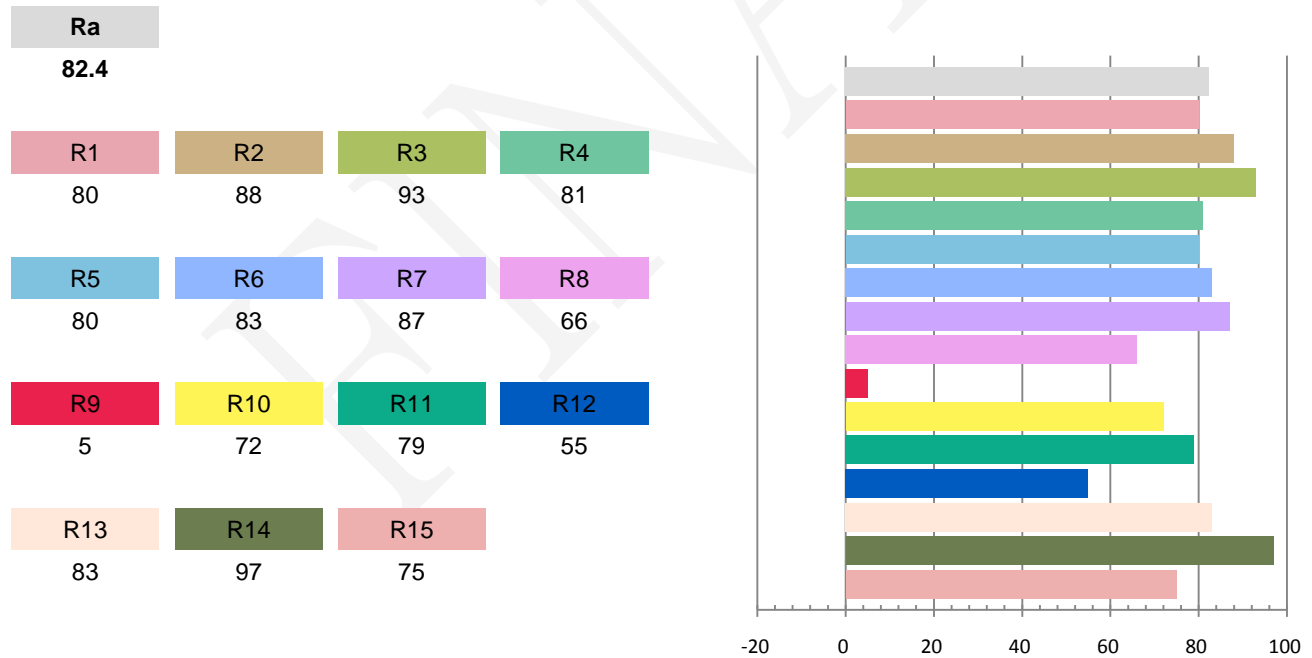
Test orientation: **Downward**

### Photometric and Electrical Measurement Result

Voltage (V)	Frequency (Hz)	Current (A)	Power (W)	Power Factor	Luminous Flux(lm)	Efficacy (lm/W)
120.1	60	0.32	38.15	0.992	3964.1	103.9

Radiant Flux (W)	CCT (K)	Duv	x	y	u'	v'
12.200	4962	0.00212	0.3466	0.3571	0.2103	0.4875

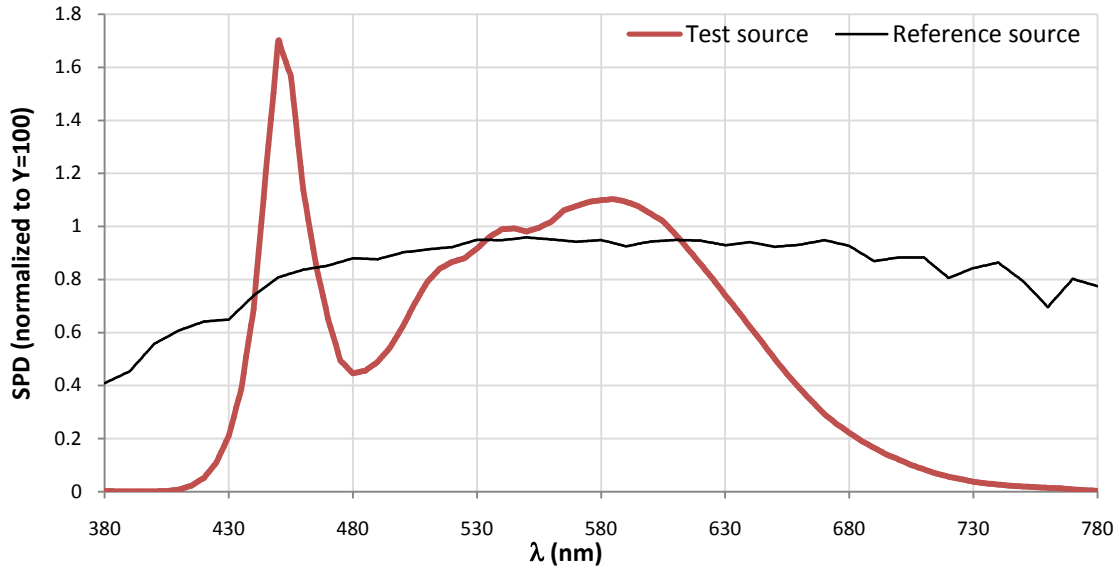
### Color Rendering Index



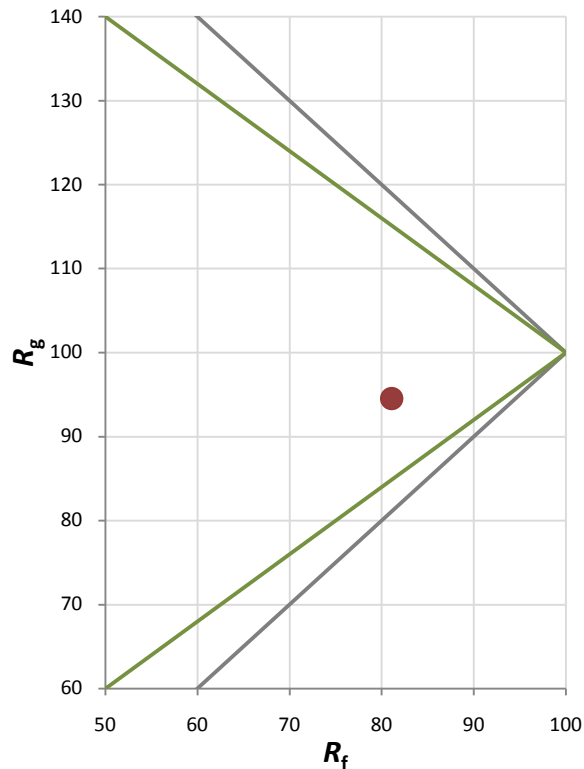
Fidelity Index and Gamut Index

Fidelity Index $R_f$	81
Gamut Index $R_g$	95

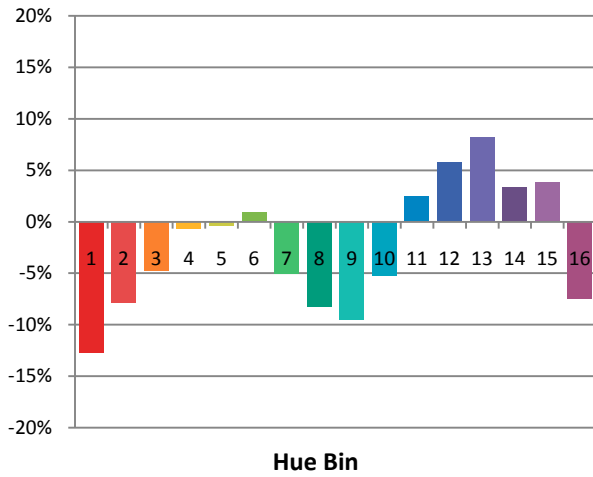
Spectral Power Distribution Comparison



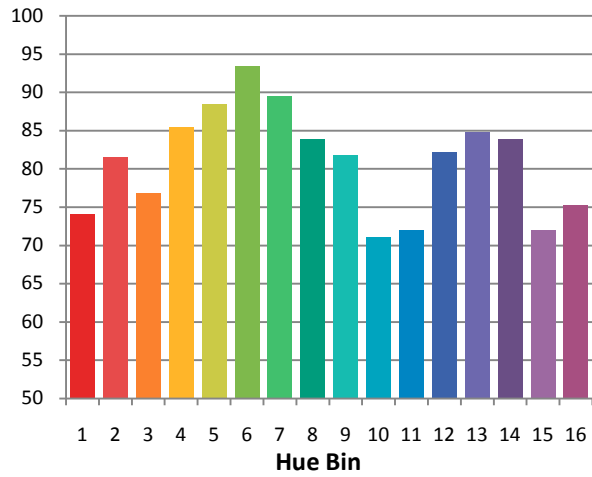
Plot of  $R_g$  versus  $R_f$



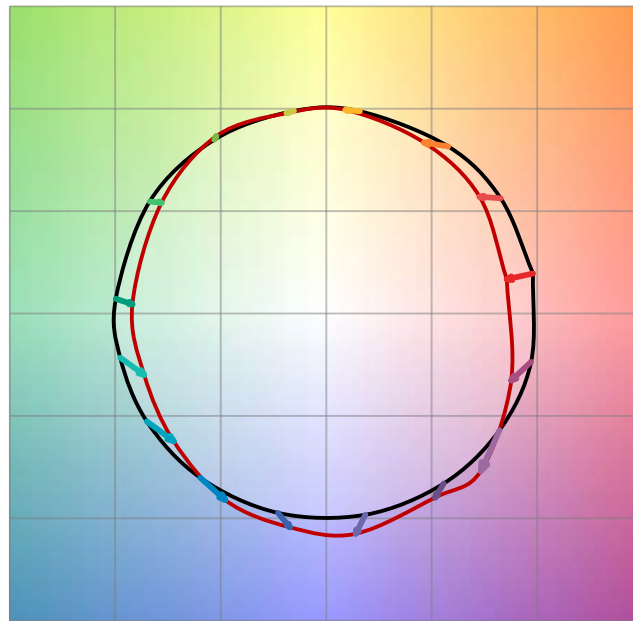
Chroma Shift by Hue



$R_f$  by Hue

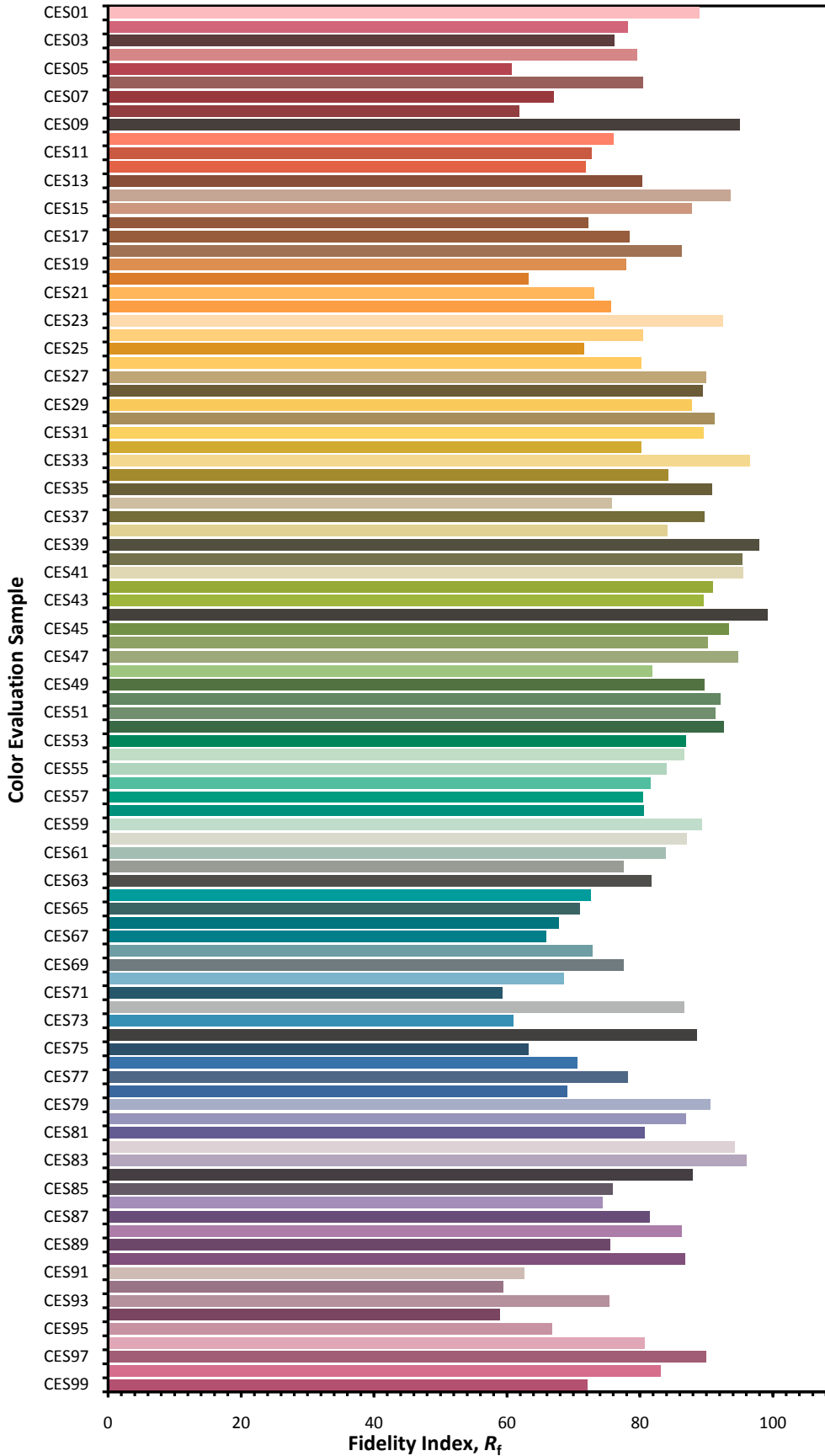


Color Vector Graphic

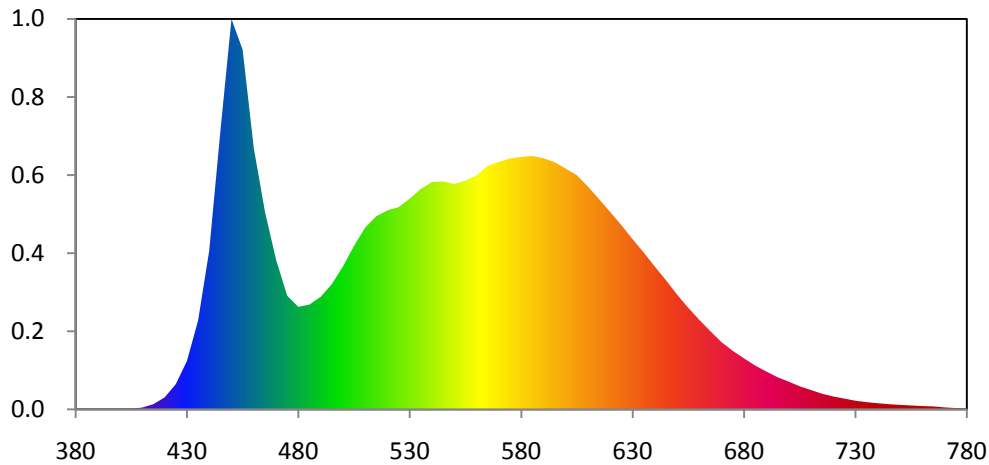


— Reference Illuminat    — Test Source

**Color Fidelity by CES Sample**



**Relative Spectral Power Distribution**

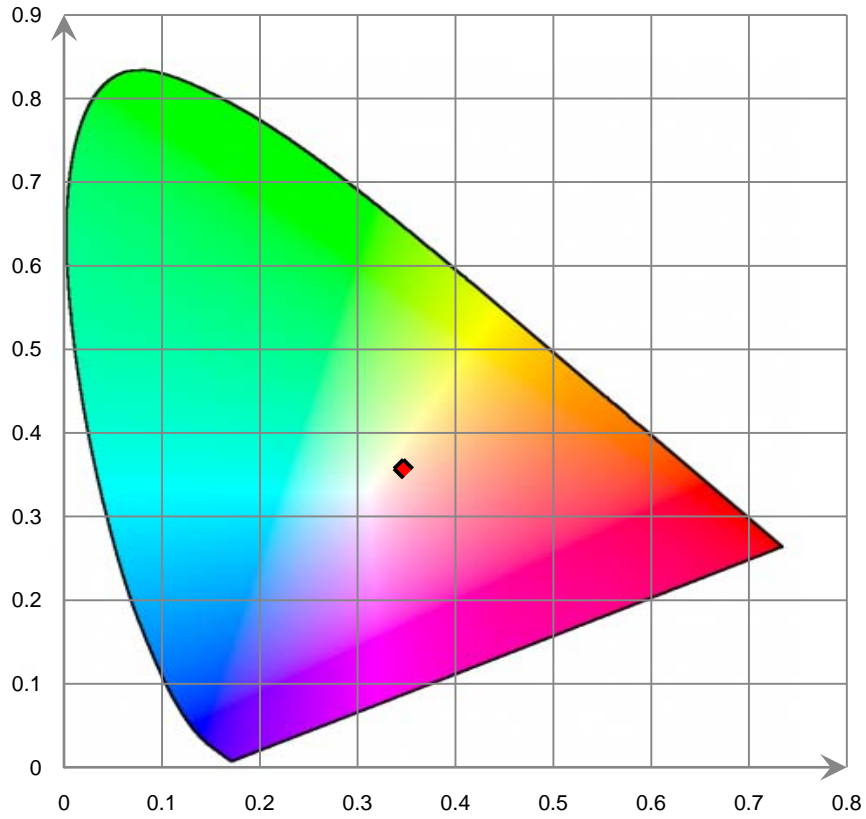


nm	mW	nm	mW	nm	mW	nm	mW	nm	mW
380	1.384E-01	421	3.702E+00	462	5.961E+01	503	3.920E+01	544	5.755E+01
381	1.283E-01	422	4.371E+00	463	5.640E+01	504	4.025E+01	545	5.758E+01
382	1.181E-01	423	5.040E+00	464	5.319E+01	505	4.130E+01	546	5.745E+01
383	1.079E-01	424	5.708E+00	465	4.997E+01	506	4.222E+01	547	5.733E+01
384	9.769E-02	425	6.377E+00	466	4.755E+01	507	4.315E+01	548	5.720E+01
385	8.749E-02	426	7.045E+00	467	4.512E+01	508	4.408E+01	549	5.707E+01
386	8.351E-02	427	7.713E+00	468	4.269E+01	509	4.501E+01	550	5.695E+01
387	7.952E-02	428	8.381E+00	469	4.026E+01	510	4.594E+01	551	5.711E+01
388	7.553E-02	429	9.050E+00	470	3.784E+01	511	4.651E+01	552	5.727E+01
389	7.155E-02	430	9.718E+00	471	3.541E+01	512	4.708E+01	553	5.744E+01
390	6.756E-02	431	1.039E+01	472	3.299E+01	513	4.765E+01	554	5.760E+01
391	6.357E-02	432	1.106E+01	473	3.057E+01	514	4.821E+01	555	5.776E+01
392	5.958E-02	433	1.173E+01	474	2.815E+01	515	4.878E+01	556	5.803E+01
393	5.559E-02	434	1.240E+01	475	2.573E+01	516	4.935E+01	557	5.830E+01
394	5.160E-02	435	1.307E+01	476	2.331E+01	517	4.992E+01	558	5.857E+01
395	4.761E-02	436	1.374E+01	477	2.089E+01	518	5.049E+01	559	5.884E+01
396	4.362E-02	437	1.441E+01	478	1.847E+01	519	5.106E+01	560	5.911E+01
397	3.963E-02	438	1.508E+01	479	1.605E+01	520	5.163E+01	561	5.959E+01
398	3.564E-02	439	1.575E+01	480	1.363E+01	521	5.220E+01	562	6.008E+01
399	3.165E-02	440	1.642E+01	481	1.121E+01	522	5.277E+01	563	6.057E+01
400	2.766E-02	441	1.709E+01	482	879E+00	523	5.334E+01	564	6.105E+01
401	2.367E-02	442	1.776E+01	483	637E+00	524	5.391E+01	565	6.154E+01
402	1.968E-02	443	1.843E+01	484	395E+00	525	5.448E+01	566	6.173E+01
403	1.569E-02	444	1.910E+01	485	153E+00	526	5.505E+01	567	6.193E+01
404	1.170E-02	445	1.977E+01	486	91E+00	527	5.562E+01	568	6.212E+01
405	7.71E-03	446	2.044E+01	487	49E+00	528	5.619E+01	569	6.231E+01
406	3.72E-03	447	2.111E+01	488	7E+00	529	5.676E+01	570	6.251E+01
407	2.32E-03	448	2.178E+01	489	3E+00	530	5.733E+01	571	6.268E+01
408	9.2E-04	449	2.245E+01	490	1E+00	531	5.790E+01	572	6.286E+01
409	5.2E-04	450	2.312E+01	491	0E+00	532	5.847E+01	573	6.304E+01
410	1.2E-04	451	2.379E+01	492	0E+00	533	5.904E+01	574	6.321E+01
411	0E+00	452	2.446E+01	493	0E+00	534	5.961E+01	575	6.339E+01
412	0E+00	453	2.513E+01	494	0E+00	535	6.018E+01	576	6.346E+01
413	0E+00	454	2.580E+01	495	0E+00	536	6.075E+01	577	6.354E+01
414	0E+00	455	2.647E+01	496	0E+00	537	6.132E+01	578	6.361E+01
415	0E+00	456	2.714E+01	497	0E+00	538	6.189E+01	579	6.369E+01
416	0E+00	457	2.781E+01	498	0E+00	539	6.246E+01	580	6.376E+01
417	0E+00	458	2.848E+01	499	0E+00	540	6.303E+01	581	6.381E+01
418	0E+00	459	2.915E+01	500	0E+00	541	6.360E+01	582	6.386E+01
419	0E+00	460	2.982E+01	501	0E+00	542	6.417E+01	583	6.391E+01
420	0E+00	461	3.049E+01	502	0E+00	543	6.474E+01	584	6.396E+01

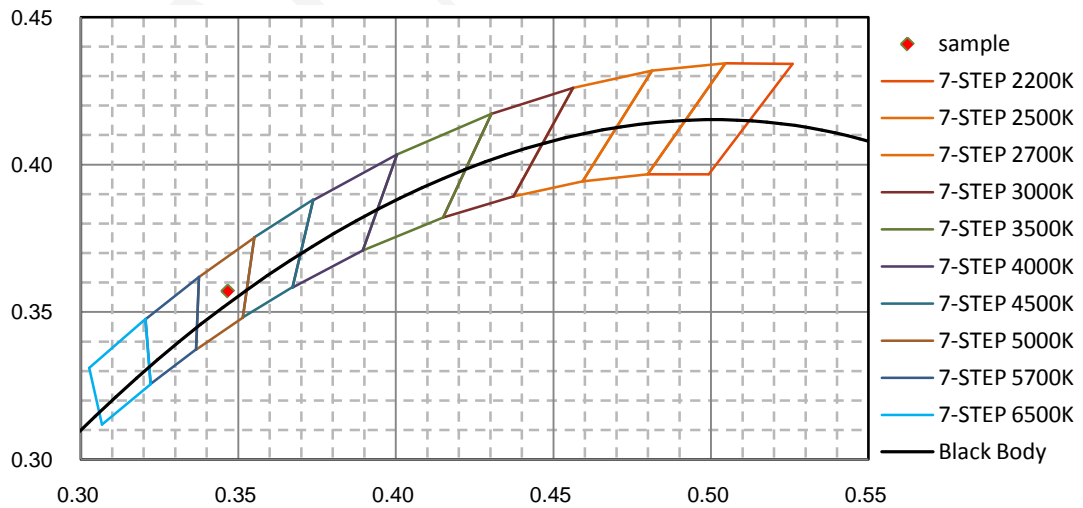


nm	mW	nm	mW	nm	mW	nm	mW	nm	mW
585	6.400E+01	626	4.583E+01	667	1.861E+01	708	5.275E+00	749	1.179E+00
586	6.389E+01	627	4.513E+01	668	1.806E+01	709	5.088E+00	750	1.147E+00
587	6.378E+01	628	4.442E+01	669	1.751E+01	710	4.901E+00	751	1.117E+00
588	6.367E+01	629	4.371E+01	670	1.696E+01	711	4.713E+00	752	1.087E+00
589	6.356E+01	630	4.301E+01	671	1.652E+01	712	4.525E+00	753	1.058E+00
590	6.345E+01	631	4.234E+01	672	1.609E+01	713	4.337E+00	754	1.028E+00
591	6.325E+01	632	4.166E+01	673	1.566E+01	714	4.149E+00	755	9.979E-01
592	6.305E+01	633	4.099E+01	674	1.522E+01	715	3.962E+00	756	9.665E-01
593	6.285E+01	634	4.032E+01	675	1.479E+01	716	3.824E+00	757	9.351E-01
594	6.265E+01	635	3.965E+01	676	1.441E+01	717	3.686E+00	758	9.037E-01
595	6.244E+01	636	3.893E+01	677	1.403E+01	718	3.549E+00	759	8.723E-01
596	6.212E+01	637	3.822E+01	678	1.366E+01	719	3.411E+00	760	8.409E-01
597	6.180E+01	638	3.750E+01	679	1.328E+01	720	3.274E+00	761	8.226E-01
598	6.147E+01	639	3.679E+01	680	1.290E+01	721	3.166E+00	762	8.042E-01
599	6.115E+01	640	3.607E+01	681	1.254E+01	722	3.058E+00	763	7.858E-01
600	6.082E+01	641	3.538E+01	682	1.218E+01	723	2.950E+00	764	7.674E-01
601	6.049E+01	642	3.469E+01	683	1.181E+01	724	2.842E+00	765	7.490E-01
602	6.016E+01	643	3.400E+01	684	1.145E+01	725	2.734E+00	766	7.001E-01
603	5.982E+01	644	3.331E+01	685	1.109E+01	726	2.624E+00	767	6.511E-01
604	5.949E+01	645	3.261E+01	686	1.079E+01	727	2.514E+00	768	6.021E-01
605	5.915E+01	646	3.189E+01	687	1.048E+01	728	2.404E+00	769	5.532E-01
606	5.885E+01	647	3.117E+01	688	1.018E+01	729	2.295E+00	770	5.042E-01
607	5.800E+01	648	3.044E+01	689	9.880E+00	730	2.185E+00	771	4.698E-01
608	5.742E+01	649	2.972E+01	690	9.578E+00	731	2.114E+00	772	4.354E-01
609	5.685E+01	650	2.900E+01	691	9.290E+00	732	2.042E+00	773	4.009E-01
610	5.627E+01	651	2.833E+01	692	9.003E+00	733	1.971E+00	774	3.665E-01
611	5.563E+01	652	2.766E+01	693	8.715E+00	734	1.900E+00	775	3.321E-01
612	5.500E+01	653	2.700E+01	694	8.428E+00	735	1.829E+00	776	3.031E-01
613	5.437E+01	654	2.633E+01	695	8.140E+00	736	1.774E+00	777	2.742E-01
614	5.373E+01	655	2.566E+01	696	7.919E+00	737	1.719E+00	778	2.452E-01
615	5.310E+01	656	2.505E+01	697	7.697E+00	738	1.664E+00	779	2.163E-01
616	5.245E+01	657	2.444E+01	698	7.475E+00	739	1.609E+00	780	1.873E-01
617	5.180E+01	658	2.382E+01	699	7.253E+00	740	1.555E+00		
618	5.115E+01	659	2.321E+01	700	7.031E+00	741	1.505E+00		
619	5.050E+01	660	2.260E+01	701	6.792E+00	742	1.456E+00		
620	4.985E+01	661	2.202E+01	702	6.553E+00	743	1.406E+00		
621	4.919E+01	662	2.144E+01	703	6.314E+00	744	1.357E+00		
622	4.853E+01	663	2.087E+01	704	6.075E+00	745	1.307E+00		
623	4.787E+01	664	2.029E+01	705	5.836E+00	746	1.275E+00		
624	4.720E+01	665	1.971E+01	706	5.649E+00	747	1.243E+00		
625	4.654E+01	666	1.916E+01	707	5.462E+00	748	1.211E+00		

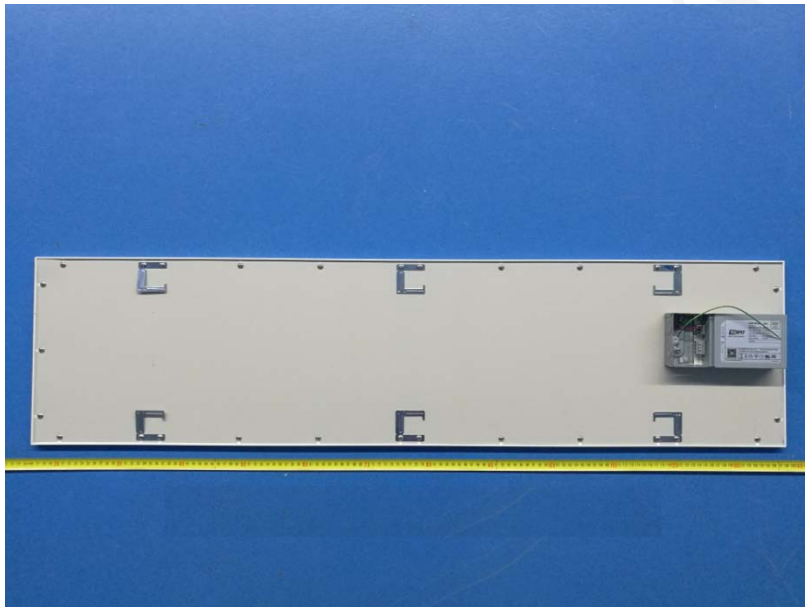
**CIE 1931 x y Chromaticity Diagram**



**7-Step Chromaticity Quadrangles**



**6. Product Photo**



\*\*\*\*\*END OF REPORT\*\*\*\*\*