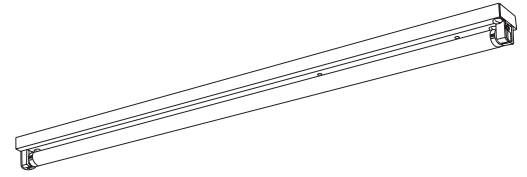


# TECHNICAL SPECIFICATIONS

## WS Slim Striplite



CATALOG NUMBER \_\_\_\_\_  
 TYPE \_\_\_\_\_  
 DATE \_\_\_\_\_  
 PREPARED BY \_\_\_\_\_  
 PROJECT \_\_\_\_\_

**HOUSING:** Die-formed heavy gauge steel with high-gloss, baked white enamel finish over rust inhibiting phosphate coat. Removable front panel allows access for wiring with snap-in conduit fittings on site. Quick assembly to back panel with screws provided. Embossed mounting holes through fixture speed up mounting to surface and allow remote assembly, if required. Striplite is shipped separate from remote ballast box and flex assemblies.

**ELECTRICAL:** Ballast and flex prepared as specified. Fully wired for UNV 120-277V, 50-60Hz operation with thermally protected, automatic resetting Class P, sound rated A ballast as standard unless otherwise specified. UL listed.

**MOUNTING AND BALLAST BOX:** One 18" ballast box can comfortably handle up to 4 striplites, utilizing the four standard knockouts. Ballast box access cover is held in place with tab and quarter-turn fastener.

### WS Series Slim Striplite Ordering Information

Series	Lamp
WS = Single lamp Slim Channel, one conduit hole	117 = 17W T8 (26" fixture length)
WSWT = Channel for wire thru, conduit hole on each end = add 2" length	125 = 25W T8 (38" fixture length)
	132 = 32W T8 (50" fixture length)

### 18" ballast box ordering information

Box	# Lamps Driven*	Ballast	Voltage
WSRB	1	B11 = Electronic T8	UNV = 120-277V
	2	B11HP(x) = HPT8**	
	3		
	4		

\*Specify number of lamps to be driven by one ballast to a maximum of 4.

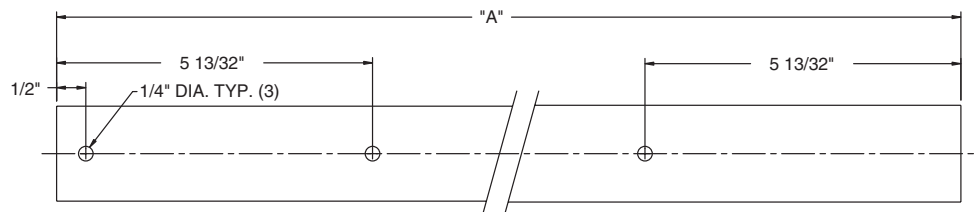
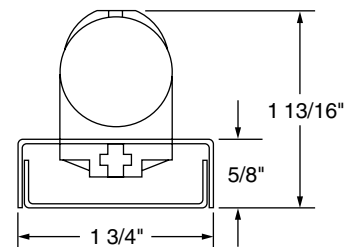
\*\* CEE listed T8; specify (L)ow, (N)ormal, or (H)igh ballast factor. Contact factory for NEMA Premium.

### Flex connectors

Series	Length*	# Wires + Ground*	Connector (end 1)	Connector (end 2)
WSFL	6 = 6'(standard)	3W = 3 wire (red, green, blue)	STR = Straight 90 = 90°	STR = Straight 90 = 90°

\*Contact factory for other lengths and wire configurations

### Dimensions



FIXTURE	DIMENSION "A"
WSWT117	27 13/16"
WSWT125	39 13/16"
WSWT132	51 13/16"